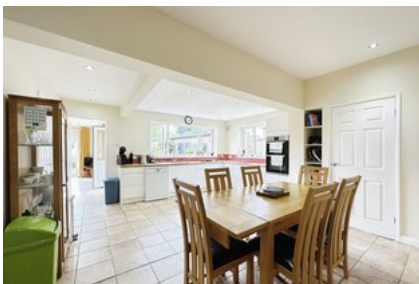




Morton Lane, Beverley

INVITING OFFERS BETWEEN £400,000 - £430,000



- ✓ Charming Home With Large South-facing Garden
- ✓ Ideal Location, Close To Ammenities
- ✓ Solar Panels
- ✓ Four Bedrooms
- ✓ Freehold
- ✓ Tax Band D
- ✓ Epc B

Guide Price **£400,000**

Bedroom 4 Bathroom 3 Reception 1