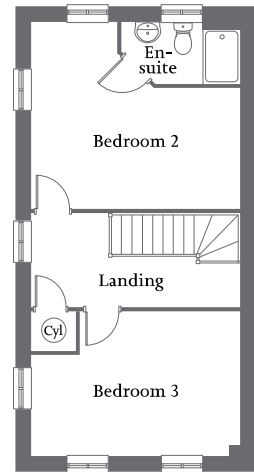
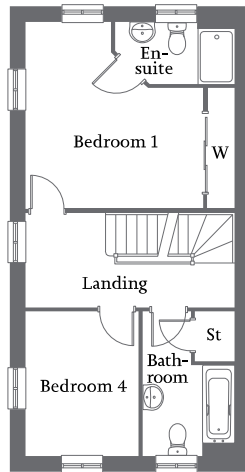
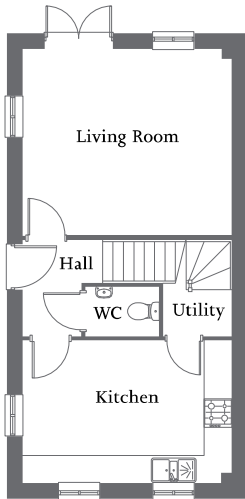




| Front aspect kitchen with utility | Living room with French Doors to garden | Bedroom 1 with en-suite and fitted wardrobe |
| Bedroom 2 with en-suite | Two further bedrooms and family bathroom | Allocated parking spaces |



Ground Floor

Living Room	4.57m x 4.06m	15'0" x 13'4"
Kitchen	4.57m x 3.13m	15'0" x 10'3"
Utility	1.60m x 1.06m	5'3" x 3'6"

First Floor

Bedroom 1	4.57m x 4.05m	15'0" x 13'4"
En-suite	2.60m x 1.34m	8'6" x 4'5"
Bedroom 4	3.15m x 2.47m	10'4" x 8'1"
Bathroom	3.15m x 2.01m	10'4" x 6'7"

Second Floor

Bedroom 2	4.57m x 4.06m	15'0" x 13'4"
En-suite	2.60m x 1.34m	8'6" x 4'5"
Bedroom 3	4.57m x 3.16m	15'0" x 10'4"