



Flat 10, Spencer Court Merton Road, Southsea

Offers in Region of £225,000





Flat 10

Spencer Court Merton Road, Southsea

Welcome to Spencer Court in Southsea! This newly renovated top floor apartment offers a delightful living experience with its contemporary features and convenient amenities. With a modern touch, the apartment boasts sleek grey carpets and neutral decor throughout, creating a stylish and inviting ambiance.

The living space comprises two well-appointed bedrooms, providing ample room for relaxation and rest. The newly fitted kitchen is a highlight, featuring new appliances and a chic design, perfect for culinary enthusiasts. The bathroom has also been tastefully upgraded.

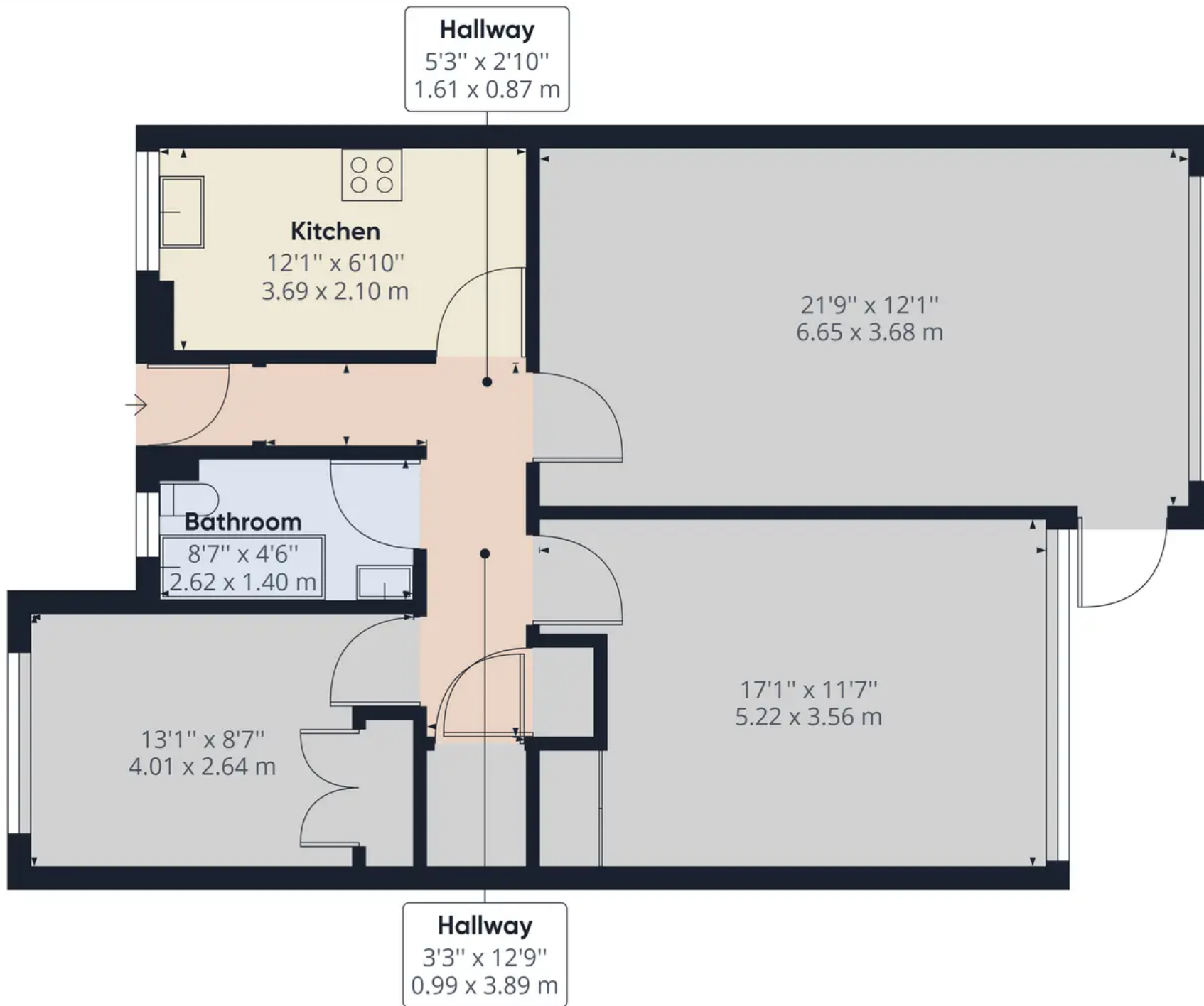
In addition to its interior charm, this property offers practicality with a range of desirable extras. A single garage within a block ensures secure parking, while a ground floor store cupboard provides valuable storage space for belongings. Imagine enjoying the pleasant Southsea weather on the private balcony, a perfect spot for al fresco dining or simply basking in the sunshine.

Furthermore, the property benefits from a lease with 94 years remaining, providing long-term security and peace of mind. Residents of Spencer Court can enjoy the convenience of local amenities, including shops, restaurants, and recreational facilities, all within easy reach.

In summary, this top floor two-bedroom apartment in Spencer Court is a must view. With its modern renovations, desirable features, and convenient location in Southsea, it presents an exceptional opportunity for comfortable living. Don't miss out on this fantastic chance to make this apartment your new home.

Council Tax band: B Tenure: Leasehold





Approximate total area⁽¹⁾

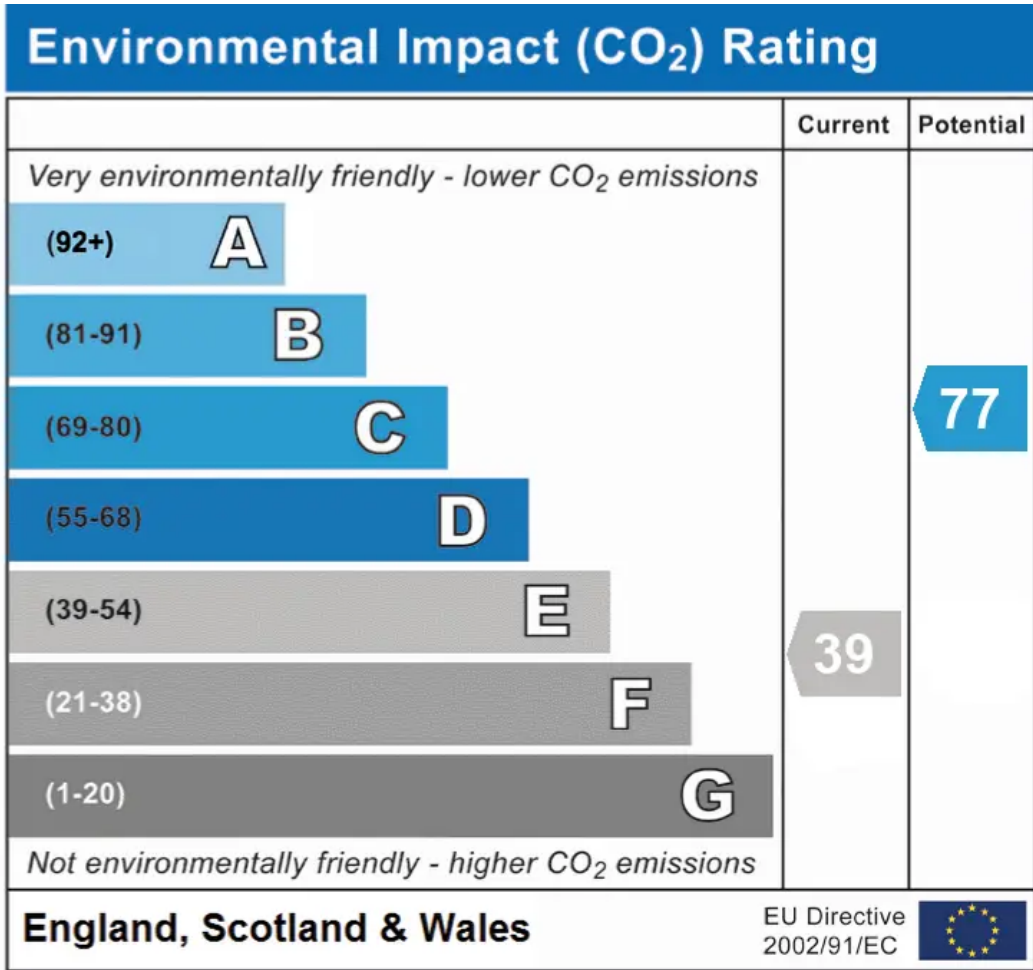
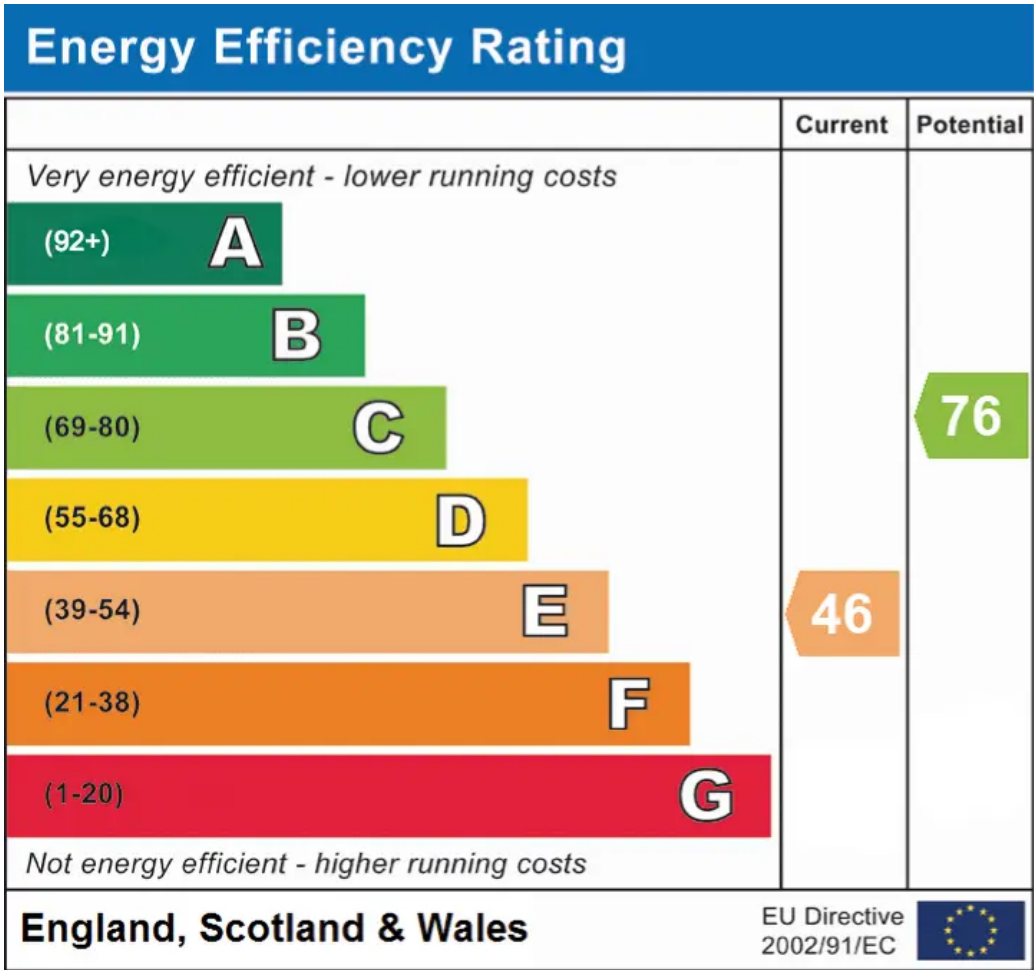
796.51 ft²

74.00 m²

(1) Excluding balconies and terraces

While every attempt has been made to ensure accuracy, all measurements are approximate, not to scale. This floor plan is for illustrative purposes only.

GIRAFFE 360



Chinneck Shaw

Bridge House, Milton Road, Portsmouth – PO3 6AN

023 9282 6731

hello@chinneckshaw.co.uk

www.chinneckshaw.co.uk/

Chinneck Shaw, Bridge House, Milton Road, PO3 6AN Consumer Protection from Unfair Trading Regulations 2008: These details are for guidance only and complete accuracy cannot be guaranteed. If there is any point which is of particular importance, verification should be obtained. The do not constitute a contract or part of a contract. All measurements are approximate. No guarantee can be given with regard to planning permissions or fitness for purpose. No apparatus, equipment, fixture or fitting has been tested. Items shown in the photographs are NOT necessarily included. Interested Parties are advised to check availability and make an appointment to view before travelling to see a property.