



3 Bedroom Semi-Detached Offers Over £285,000

17 Coate, Swindon, Wiltshire , SN3 6AA

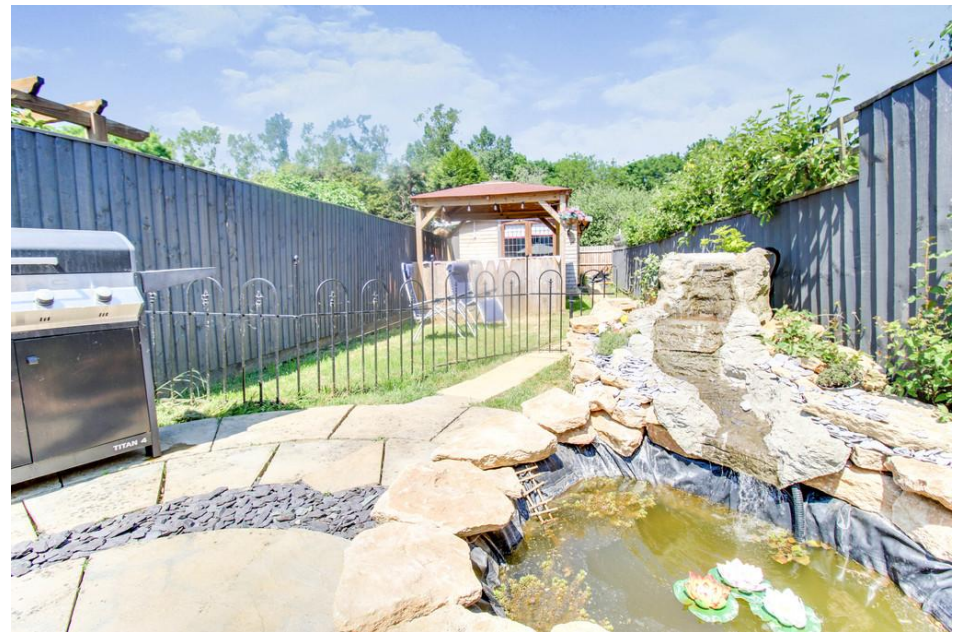
mcfarlane
property.com

3 Bedroom Semi-Detached Coate, Swindon East

- BEAUTIFULLY PRESENTED THROUGHOUT
- SOUGHT AFTER LOCATION
- GENEROUS PLOT
- CONSERVATORY

McFarlane are delighted to offer to the market in the popular location of Coate, this beautifully presented and deceptively spacious three-bedroom semi-detached Cottage. Bursting with character and a very impressive kitchen area, this property would suit a vast range of buyers looking for that something special. Situated a short stroll to Coate Water Country Park and providing excellent access to the A419 and J16 of the M4. Comprising; entrance porch, spacious living room, WOW factor kitchen with feature island and a generous conservatory to the rear. Upstairs you will find a generous master bedroom with fitted wardrobes, the double second bedroom which also offers fitted wardrobes, a recently re-fitted bathroom plus a good size third bedroom. Outside offers a fantastic Bar, fully enclosed garden with a mix of both lawn and patio areas.





We 
where you
LIVE

Our team are friendly, experienced and are all local. They know it better than they do their own living rooms and can help you find what you're looking for because **we love where we live.**

We would be delighted to show you around this property.

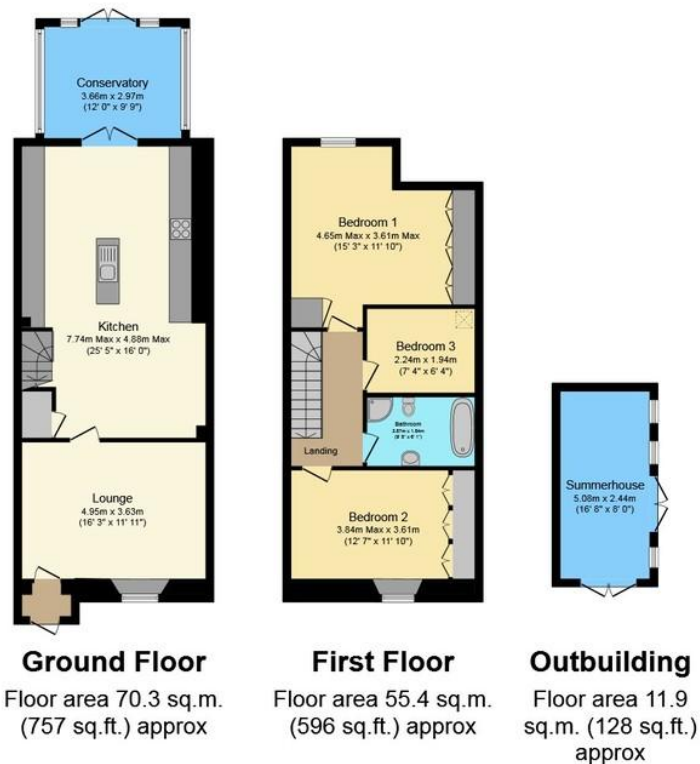
**Because every home
needs a personal touch.**

**If you would like to view this
property then please get in touch.**

 01793 296600

 swindon@mcfarlaneproperty.com

mcfarlaneproperty.com



Total floor area 137.6 sq.m. (1,481 sq.ft.) approx

This Floor Plan is for illustration purposes only and may not be representative of the property. The position and size of doors, windows and other features are approximate. Unauthorized reproduction prohibited. © PropertyBOX

mcfarlane
property.com

Cricklade.
102 High Street
Cricklade SN6 6AA
 01793 751044

Marlborough.
106 High Street
Marlborough SN8 1LT
 01672 514380

Old Town.
28-30 Wood Street
Swindon SN1 4AB
 01793 296880

Swindon.
The Village Centre,
Redhouse SN25 2FW
 01793 296600

Agents Note: Whilst every care has been taken to prepare these sales particulars, they are for guidance purposes only. All measurements are approximate are for general guidance purposes only and whilst every care has been taken to ensure their accuracy, they should not be relied upon and potential buyers are advised to recheck the measurements