



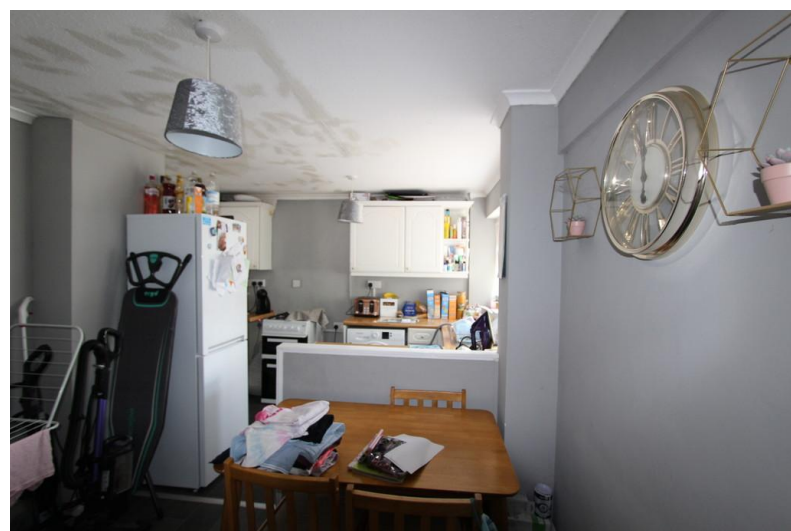
3 Cornfield Croft

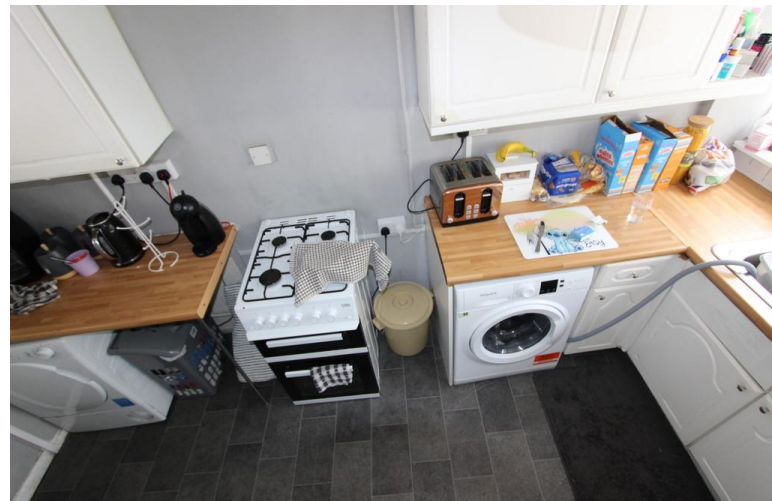
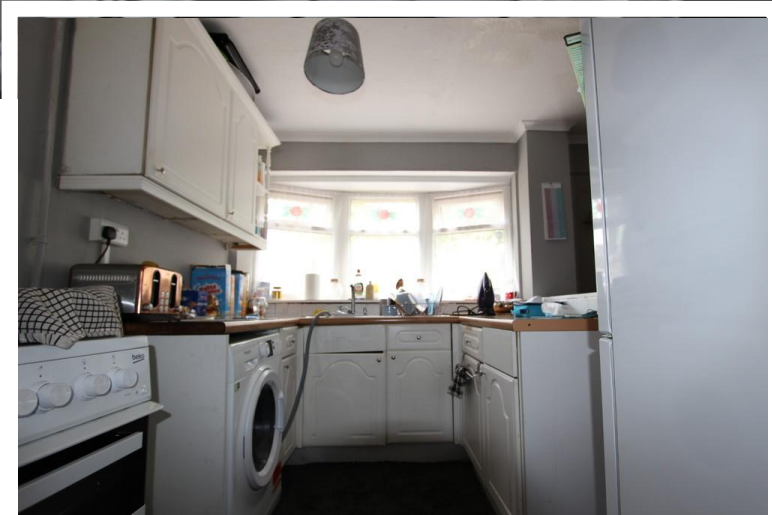
Chelmsley Wood , Birmingham, B37 6TP

- 3 Bedrooms
- Lounge
- Kitchen Diner
- Bathroom

Offers In Region Of £175,000

EPC Rating 'TBC'





Property Description

INVESTMENT OPPORTUNITY !!

Are you a landlord looking to increase your portfolio, or just looking to start out as a Landlord?

This is the 3 bedroom property for you, with an existing tenant there is no hassle.

In the heart of Chelmsley Wood the property is close to schools, shops and transport links including the new HS2

Ground Floor

Porch

UPVC double glazed window to front, door to:

Hall

Stairs, open plan to:



Kitchen/Diner

4.50m (14'9") x 2.92m (9'7")

Fitted with a matching range of base and eye level units with worktop space over, stainless steel sink with single drainer and mixer tap, uPVC double glazed window to front, Storage cupboard, double radiator, door to:



Lounge

5.53m (18'2") x 3.37m (11'1")

UPVC, double glazed window to rear, radiator and Various power point(s).

First Floor



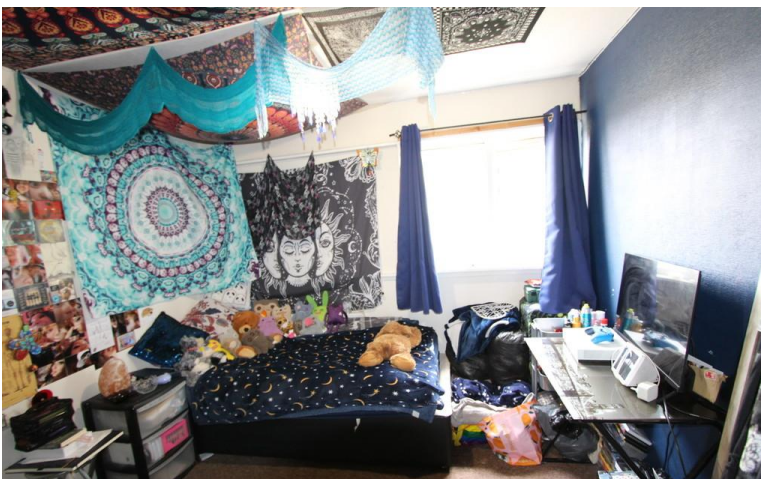
Landing

Fitted Carpet, Two Storage cupboard, doors to .

Bedroom 1

3.37m (11'1") x 3.02m (9'11")

UPVC double glazed window to rear, radiator, and various PowerPoints.



Bedroom 2

2.99m (9'10") x 2.95m (9'8")

UPVC double glazed window to front, radiator, and various PowerPoints.



Bedroom 3

2.44m (8') x 2.39m (7'10") plus 0.45m (1'6") x 0.45m (1'6")

UPVC double glazed window to rear, radiator, and various PowerPoints.



Bathroom

Fitted with two piece Suite comprising bath with shower over, wash hand basin an, uPVC double glazed window to front.

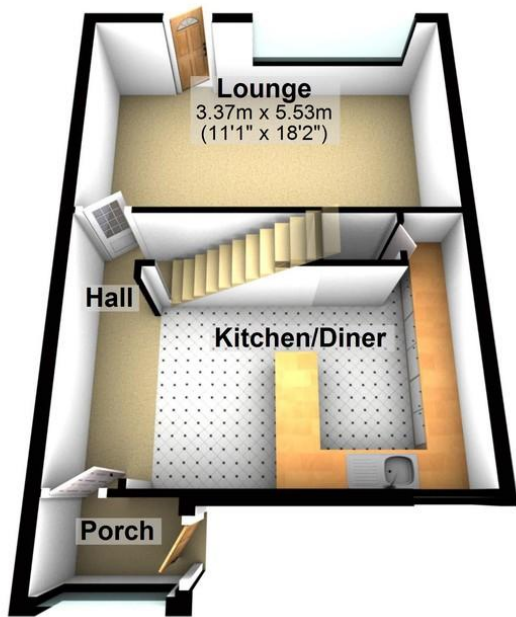


OUTSIDE:

To the front there is an enclosed garden with a variety of shrubs and trees.

To the rear there is an enclosed rear garden with steps to lawned area, paved patio area.

Ground Floor



First Floor



66 Station Road
Marston Green
Birmingham
West Midlands
B37 7BA

www.blackandwhitelettings.co.uk
info@blackandwhiteestateagents.com
0121 770 8811

Agents Note: Whilst every care has been taken to prepare these sales particulars, they are for guidance purposes only. All measurements are approximate and are for general guidance purposes only and whilst every care has been taken to ensure their accuracy, they should not be relied upon and potential buyers are advised to recheck the measurements