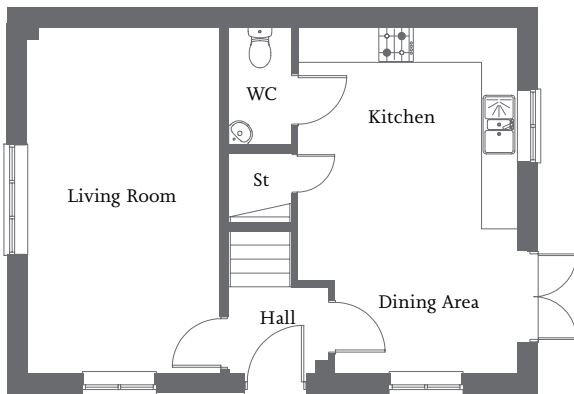


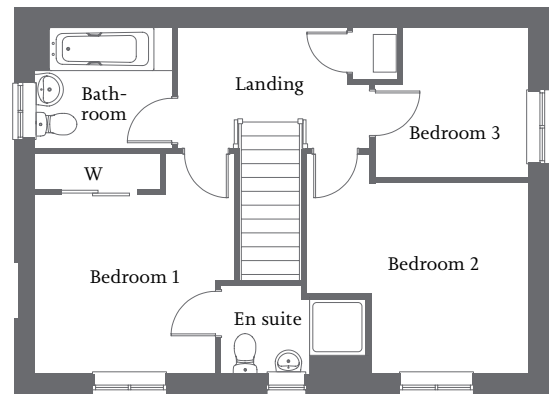


| Dual aspect living room | Kitchen/dining area with French Doors |  
| Bedroom 1 with en suite and fitted wardrobe | Two further bedrooms and family bathroom | Allocated parking spaces |



### Ground Floor

Living Room	5.64m x 3.15m	18'6" x 10'4"
Kitchen/Dining Area	5.64m x 3.58m	18'6" x 11'9"



### First Floor

Bedroom 1 (incl. wardrobe)	3.57m x 3.20m	11'9" x 10'6"
En suite	2.33m x 1.43m	7'8" x 4'8"
Bedroom 2	3.59m x 3.09m	11'9" x 10'2"
Bathroom 3	2.49m x 2.43m	8'2" x 8'0"
Bathroom	2.19m x 1.95m	7'2" x 6'5"