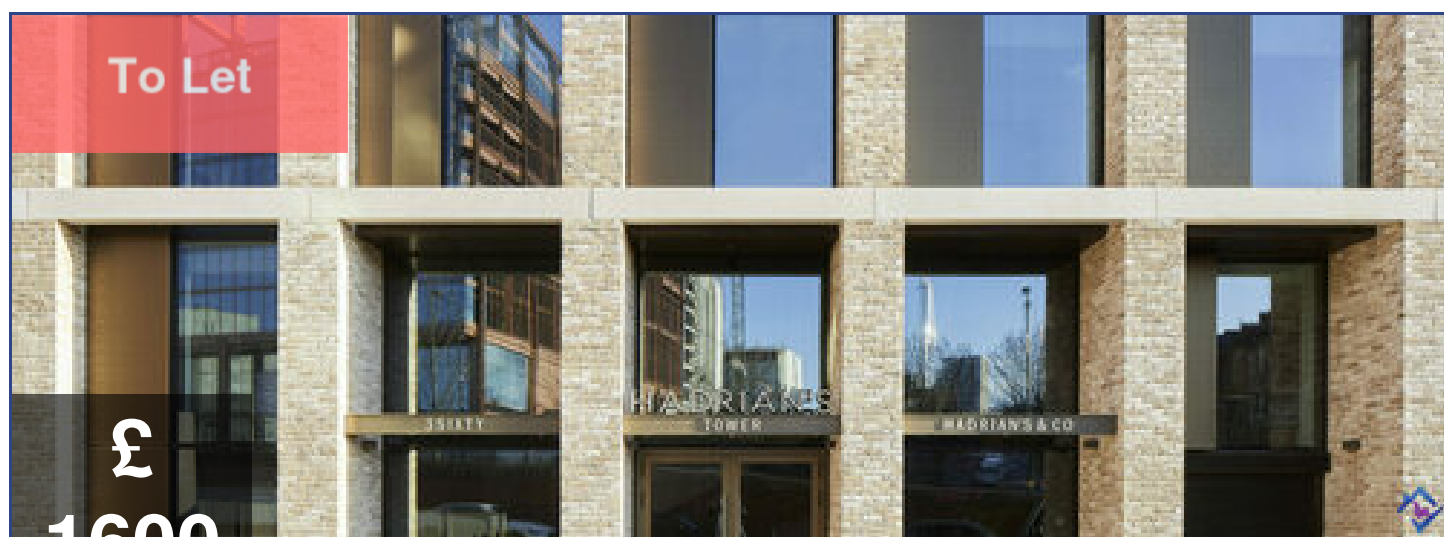


Flat 2204
Hadrian's Tower
27 Rutherford Street Newcastle Upon Tyne
NE4 5BJ



One bedroom luxurious apartment in Newcastle City centre.

Beds : 1

Bath : 1



0191 580 5900



WWW.SEALPROPERTIES.CO.UK



INFO@SEALPROPERTIES.CO.UK

Contact Us

Agent Information

Emma

0191 5805900

emma@sealproperties.co.uk

167/169 Saltwell Road

Gateshead, NE8 4TJ

sealproperties.co.uk



Scan Me

Scan Me For Property Details



Quote Me

**Quote This Reference Number For
More Information**

SP23040816

Disclaimer

Whilst every effort is made to ensure the contents of this brochure are accurate and true, the particulars are set out as a general outline for guidance purposes only and do not constitute any part of an offer or contract. Interested Parties should not rely on them as statements of representation of fact, but instead must satisfy themselves by inspection or otherwise as to their accuracy.

A Holding Fee equivalent to one week's rent is payable. Please contact the office for more details.

Energy Performance Certificate (EPC) information is available upon request. Please contact the office.

Gallery



Description

A well presented one bedroom apartment situated within Hadrians Tower in Newcastle City Centre!
The location offers effortless access to both Newcastle City centre and Gateshead. We urge early viewings as properties of this standard go quickly.

Specification

Entrance Hallway

22nd floor access. When entering the building through the communal entrance you will be greeted with a wonderfully presented lobby. There are lifts available to take you up to the apartment as well as stairs.

Living Space

An open plan space combining living, dining and kitchen space off-set with ceiling to floor windows offering a magnificent view of Newcastle City Centre. The property is furnished to a high standard and includes a relaxing sofa, chair, coffee table, tv stand and a small workstation for home working.

Kitchen/Diner

The large, spacious kitchen is finished in ultra modern white high-gloss finish and has all the modern appliances built-in. Appliances include fridge/freezer, microwave and oven/hob, microwave and dish washer. The apartment also includes a dining table with space to seat 4 people.

Bedroom

A decent size bedroom with a large ceiling to floor window which natural light to brighten up the room. Plenty space for a double bed and built in mirrored storage/wardrobes.

Bathroom

A three peice suite including a bath with an overhead shower and lots of space for cupboards and sort of appliances.

Additional

A concierge is available 8am to 10pm dailt, stylish resident's communal lounge, 3SIXTY Champagne Lounge on 26th Floor with panoramic views of the City, Bike Store, Laundry/Ironing Service, in-house beauty appointments, meeting spaces, cafe and residents support group.