

Latymer The Drive, Cheam

Sutton

Guide Price £3,500,000

# Latymer The Drive

Cheam, Sutton

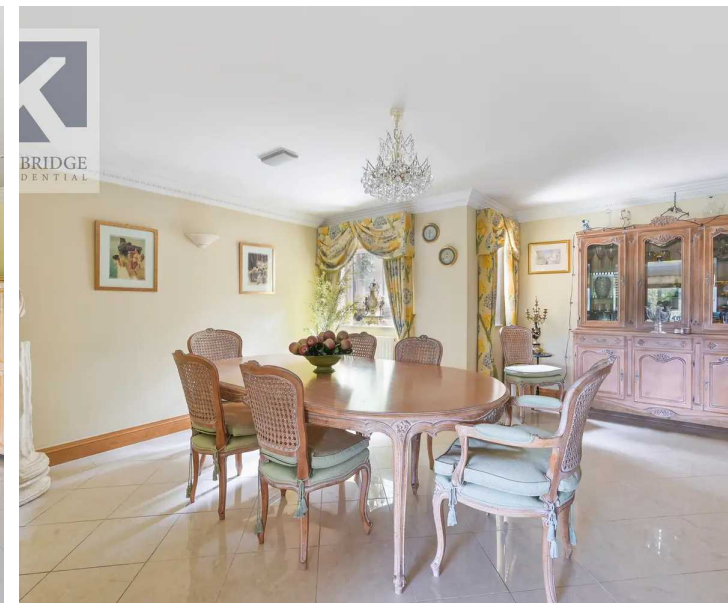
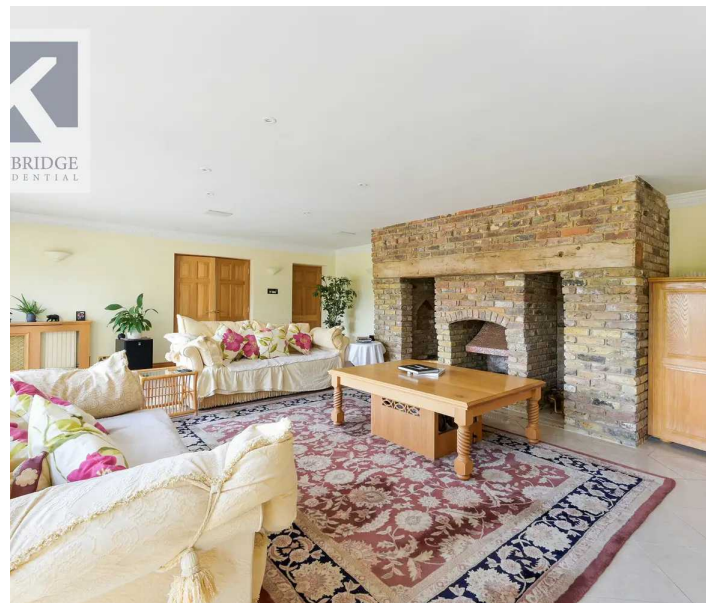
- Highly regarded and sought after private road
- Indoor swimming pool, jacuzzi, sauna, changing facilities, bar
- Over 6,000sq ft of internal area
- Tennis Court
- Within close proximity to highly regarded schools
- Overall plot size 0.70 of an acre
- Five Bedrooms with Six Bathrooms

Latymer is an impressive and spacious family home located on The Drive, a prestigious private road in South Cheam. With a total living space of over 4,500 square feet, this five-bedroom property spans three floors, offering luxurious accommodation.

Upon entering Latymer, you are greeted by a grand hallway that leads to various rooms on the ground floor. The sitting room is exceptionally spacious, providing ample room for relaxation and entertainment. Adjacent to the sitting room is a formal dining room, perfect for hosting elegant dinner parties. Additionally, there is a home office, allowing for a dedicated workspace, and a light-filled kitchen/breakfast/family area. This kitchen space is well-equipped and features large doors that open onto one of the patios, creating a seamless indoor-outdoor flow.

The ground floor also includes a convenient downstairs cloakroom and a separate utility room for laundry and storage purposes.

Moving to the first floor, you'll find four double bedrooms, each with its own en-suite bathroom. The main bedroom boasts access to a spacious 33-foot balcony, providing a private outdoor retreat.

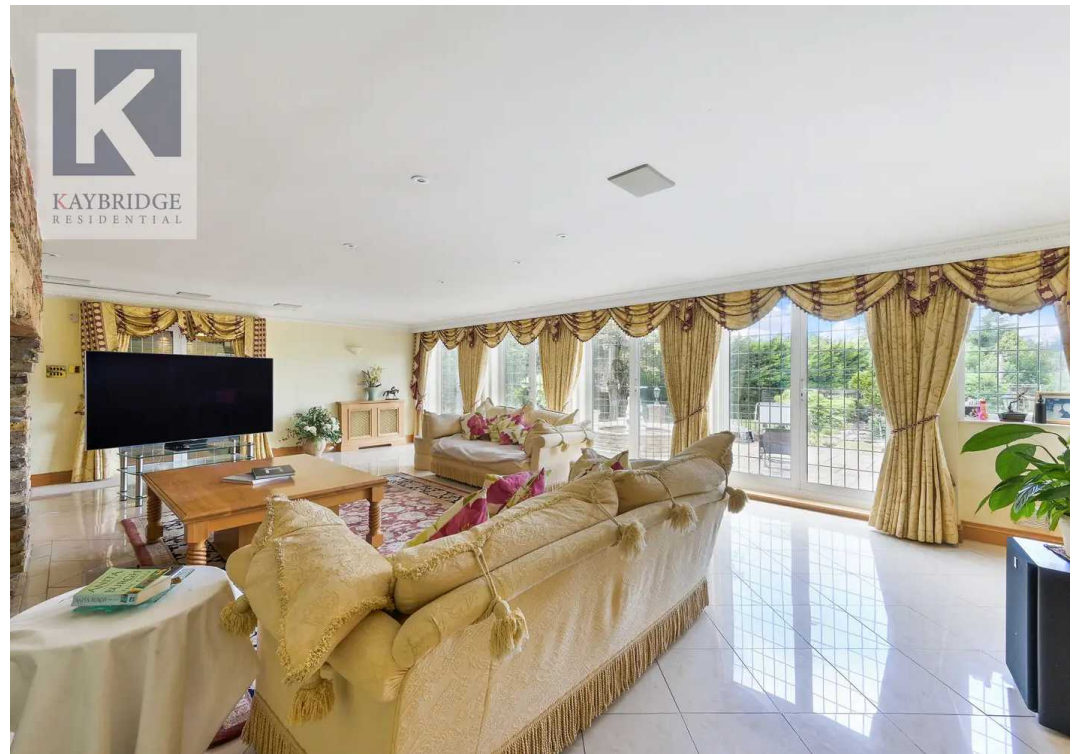
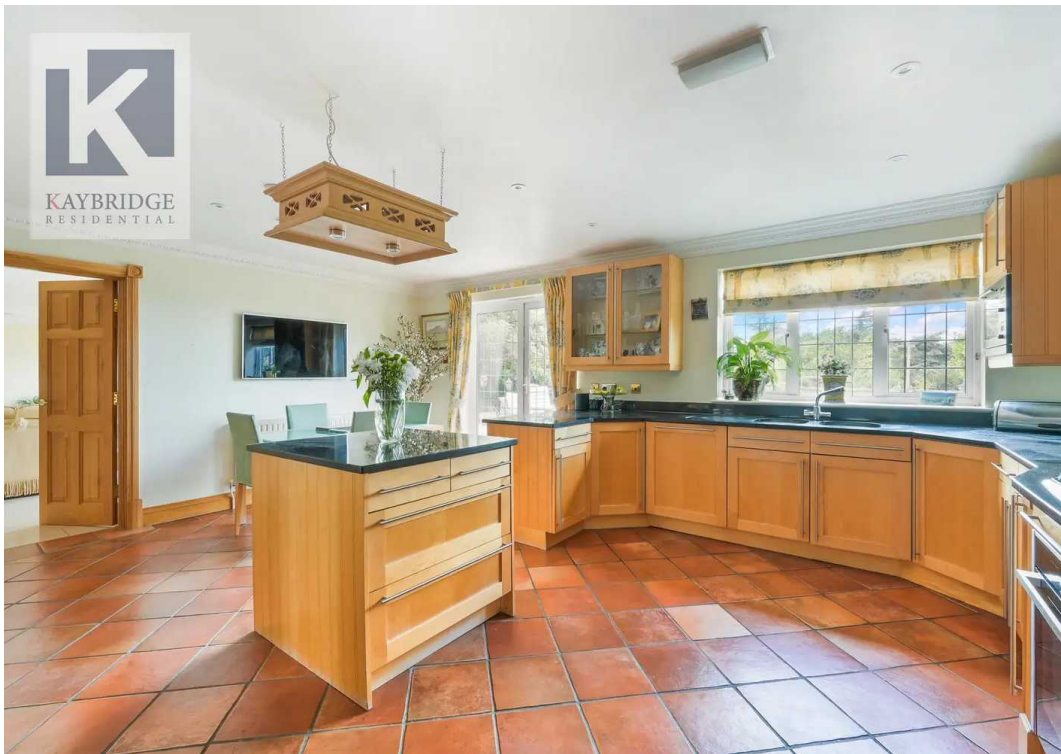




## Latymer The Drive

Cheam, Sutton

Tenure: Freehold

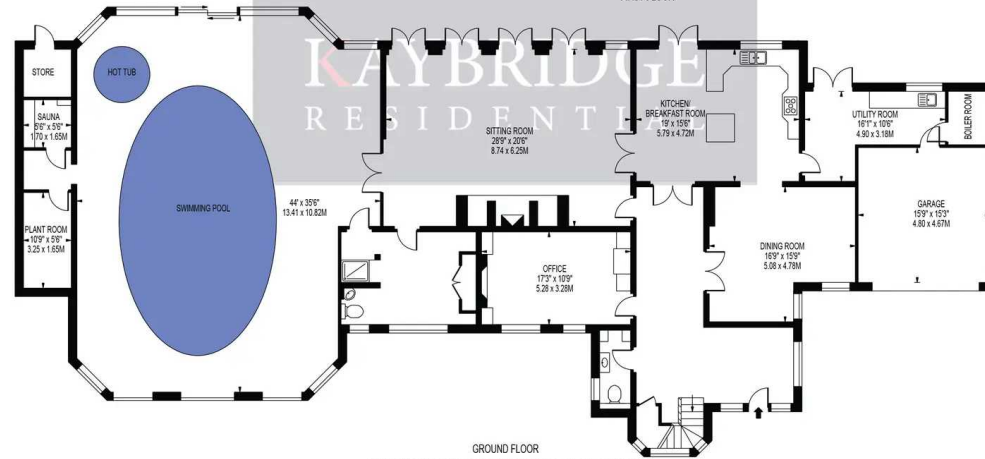
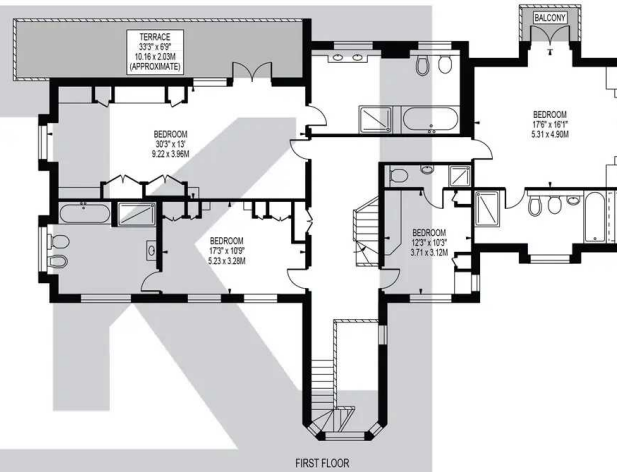
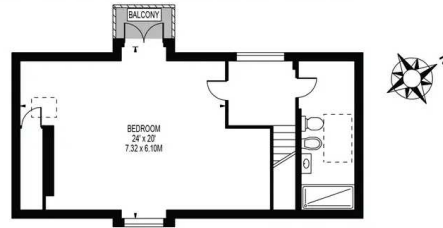


## LATYMER THE DRIVE

APPROXIMATE GROSS INTERNAL FLOOR AREA: 6385 SQ FT - 593.19 SQ M

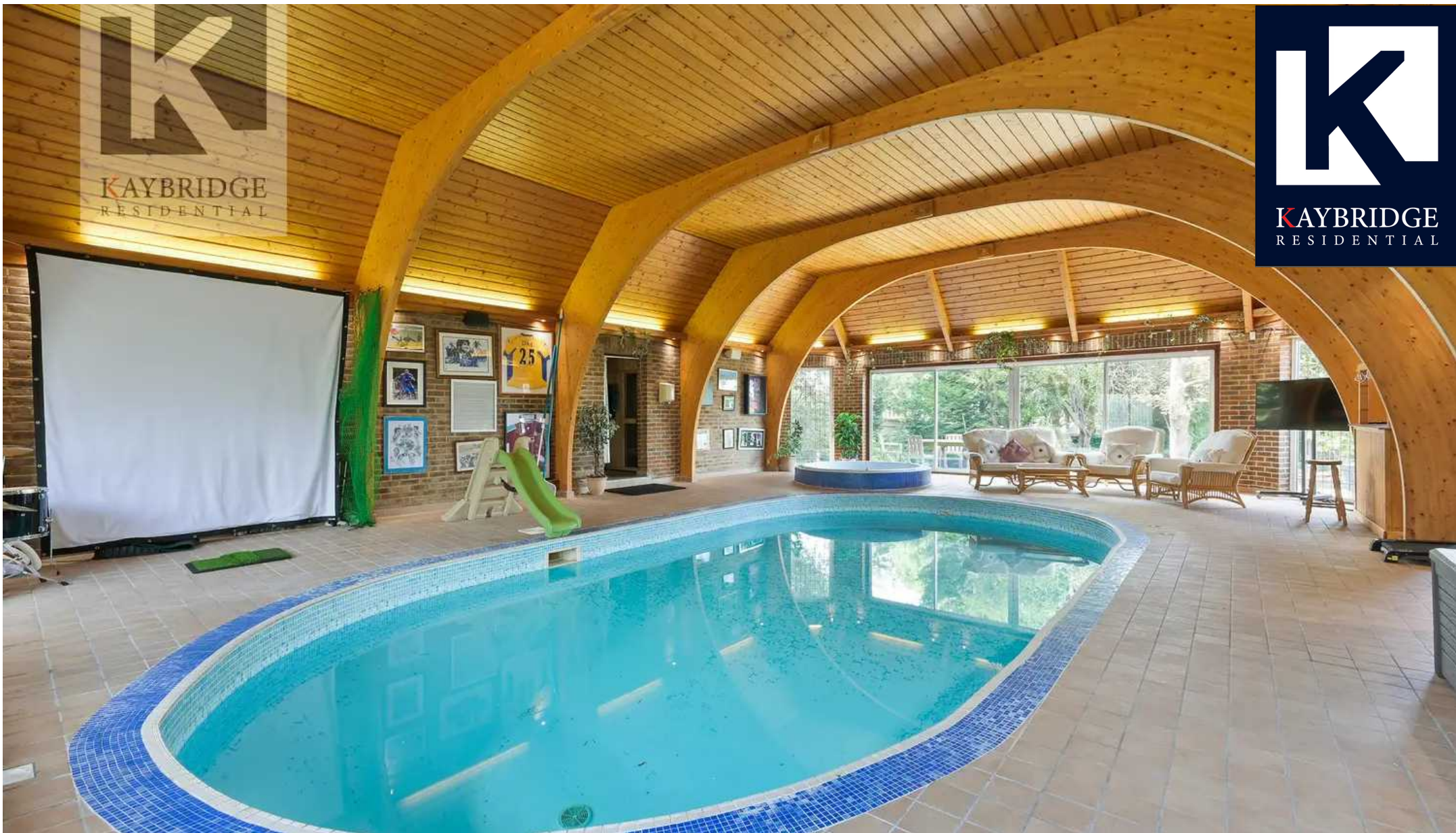
(INCLUDING GARAGE & EXCLUDING STORE)

APPROXIMATE GROSS INTERNAL FLOOR AREA OF GARAGE: 241 SQ FT - 22.42 SQ M



FOR ILLUSTRATION PURPOSES ONLY

THIS FLOOR PLAN SHOULD BE USED AS A GENERAL OUTLINE FOR GUIDANCE ONLY AND DOES NOT CONSTITUTE IN WHOLE OR IN PART AN OFFER OR CONTRACT. ANY INTENDING PURCHASER OR LESSEE SHOULD SATISFY THEMSELVES BY INSPECTION, SEARCHES, ENQUIRIES AND FULL SURVEY AS TO THE CORRECTNESS OF EACH STATEMENT. ANY AREAS, MEASUREMENTS OR DISTANCES QUOTED ARE APPROXIMATE AND SHOULD NOT BE USED TO VALUE A PROPERTY OR BE THE BASIS OF ANY SALE OR LET.



## Kaybridge Residential Epsom

Kaybridge Residential Estate Agents, 23 Stoneleigh Broadway - KT17 2JE

02080040474 • [info@kbridge.co.uk](mailto:info@kbridge.co.uk) • [www.kaybridgeresidential.co.uk/](http://www.kaybridgeresidential.co.uk/)