



Fountain Place, Horsham, West Sussex, RH12 4DU.
Guide Price £695,000 Freehold



Fountain Place, Horsham

Guide Price £695,000

- Exclusive Development of Five Homes
- Four Bedroom Detached
- Contemporary Design
- Private Close
- Detached Double Garage
- Close to Littlehaven Station
- Luxury Ensuite to Main Bedroom
- EPC B

PRIVATE CLOSE – Beautifully presented detached family home built by Whelan Homes and set in an exclusive cul de sac development of just five homes. Double garage with driveway parking, Gardens to three sides, short walk to Littlehaven station. Viewing Recommended.

Welcome to a perfect sanctuary for your family. Step through the front door and you're greeted by a grand hallway giving access to all the main rooms. The ground floor layout has been thoughtfully designed to give you space and storage, ensuring you can maintain the neat, homely ambience.

To your left, a generously proportioned lounge awaits, offering ample space for relaxing with the family or entertaining guests. Picture yourself cosy and warm by the wood burner as the nights draw in, or open the doors and have that summer inside /outside lifestyle.



On the right of the hallway, you'll find a versatile room, ideal as a formal dining area, family room or your own home office.

At the heart of the home, you'll find an impressive kitchen, designed for those who love to cook. It boasts a modern range of units providing ample storage space for all your cooking essentials. With a suite of built-in appliances including a double oven, hob with extractor fan, microwave, integrated dishwasher, and fridge/freezer, every culinary adventure is within reach.

Completing the ground floor is a practical utility room with direct access to the garden, ensuring muddy boots and paws don't traipse through your lovely home.

As you ascend to the first floor, you'll find four spacious bedrooms and a family bathroom. The main bedroom, features built-in wardrobes and a private en-suite shower room, offering a little luxury amidst the daily hustle and bustle.

Step outside to find a double detached car barn with electric roller doors, approached by a wide driveway which offers parking for several vehicles. A gate leads you to the rear garden that's wraps around three sides of the home and has a lovely patio terrace, level lawn and raised seating area, perfect for those lazy summer afternoons.

Location is key, and this home ticks all the boxes. Situated just a few minutes' walk from Littlehaven mainline station, daily commuting is a breeze. You'll find convenience stores nearby for those last-minute groceries and the idyllic countryside of Rusper is just a short cycle ride away.

Convenient bus routes and road links, including the A264, connect you to the rest of the city and beyond. The historic market town of Horsham is a mere mile away with its vibrant mix of shops, theatre, recreational facilities, and a direct train service to London.

And for those with education in mind, this home falls

within the catchment area for highly regarded primary and secondary schools including Forest, Millais & Bohunt, ensuring your little ones' learning journey is well catered for.

Welcome to your new family home, a place where life happens and memories are made.



For further details and viewing arrangements please call owners agents

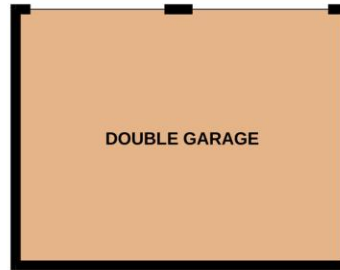
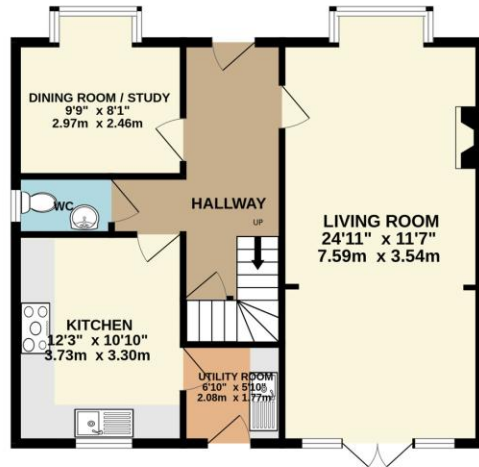
Martin & Co Horsham branch

01403 248222
horsham@martinco.com

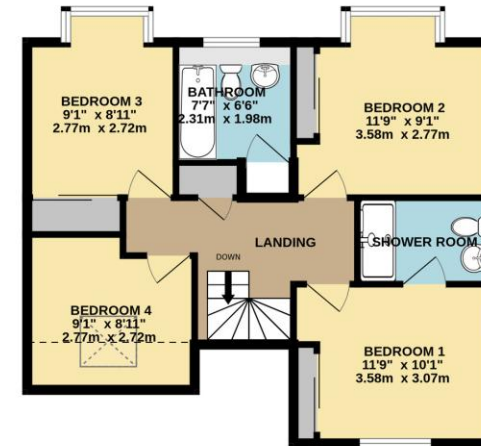




GROUND FLOOR
1043 sq.ft. (96.9 sq.m.) approx.



1ST FLOOR
635 sq.ft. (59.0 sq.m.) approx.



TOTAL FLOOR AREA : 1678 sq.ft. (155.9 sq.m.) approx.

Whilst every attempt has been made to ensure the accuracy of the floorplan contained here, measurements of doors, windows, rooms and any other items are approximate and no responsibility is taken for any error, omission or mis-statement. This plan is for illustrative purposes only and should be used as such by any prospective purchaser. The services, systems and appliances shown have not been tested and no guarantee as to their operability or efficiency can be given.
Made with Metropix ©2023

Martin & Co Horsham

Envision House • 5 North Street • Horsham • RH12 1XQ
T: 01403 248222 • E: horsham@martinco.com

01403 248222

<http://www.martinco.com>



Accuracy: References to the Tenure of a Property are based on information supplied by the Seller. The Agent has not had sight of the title documents. A Buyer is advised to obtain verification from their Solicitor. Items shown in photographs including but not limited to carpets, fixtures and fittings are not included unless specifically mentioned within the sales particulars. They may however be available by separate negotiation. Buyers must check the availability of any property and make an appointment to view before embarking on any journey to see a property. No person in the employment of the agent has any authority to make any representation about the property, and accordingly any information given is entirely without responsibility on the part of the agents, sellers(s) or lessors(s). Any property particulars are not an offer or contract, nor form part of one. **Sonic / Laser Tape:** Measurements taken using a sonic / laser tape measure may be subject to a small margin of error. **All Measurements:** All Measurements are Approximate. **Services Not tested:** The Agent has not tested any apparatus, equipment, fixtures and fittings or services and so cannot verify that they are in working order or fit for the purpose. A Buyer is advised to obtain verification from their Solicitor or Surveyor.

