



**LAWRENCE RAND**

**Castleton Road, Ruislip**

**£570,000**



## Castleton Road

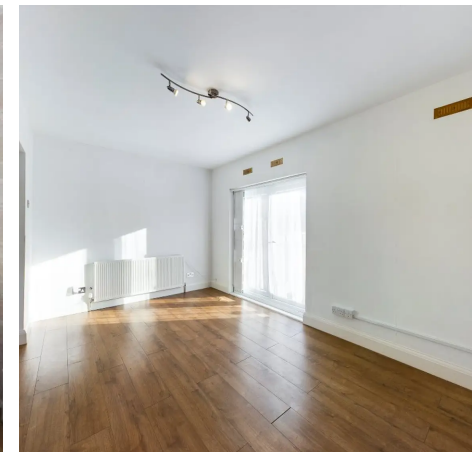
Ruislip, Ruislip

An extended three-bedroom semi-detached bungalow, offering spacious light filled contemporary interiors. Situated on this quiet residential road, close to the areas amenities, presented in good condition throughout with off street parking and a South facing garden. NO ONWARD CHAIN.

Council Tax band: E

Tenure: Freehold

- Semi-detached Bungalow
- Three bedrooms
- NO ONWARD CHAIN
- Open plan kitchen and dining
- Extended to the rear
- Good condition throughout
- South facing garden
- Off street parking





Approximate Gross Internal Area  
69.2 sq m / 745 sq ft



Ground Floor

This plan is for layout guidance only. Not drawn to scale unless stated. Windows and door openings are approximate. Whilst every care is taken in the preparation of this plan, please check all dimensions, shapes and compass bearings before making any decisions reliant upon them.



## Lawrence Rand

Lawrence Rand, 106 Victoria Road - HA4 0AL

01895 632211

[Info@lawrence-rand.co.uk](mailto:Info@lawrence-rand.co.uk)

[www.lawrence-rand.co.uk/](http://www.lawrence-rand.co.uk/)



**LAWRENCE RAND**