



## A TOP FLOOR TWO BEDROOM APARTMENT IN A PRIVATE SETTING

---

Thompson Way, Mill End, Rickmansworth, Herts, WD3 8GP



## A TOP FLOOR TWO BEDROOM APARTMENT IN A PRIVATE SETTING

Thompson Way, Mill End, Rickmansworth, Herts, WD3 8GP

- **LOUNGE/DINING ROOM**
- **MODERN KITCHEN**
- **TWO BEDROOMS**
- **FAMILY BATHROOM**
- **ONE ALLOCATED PARKING SPACE**
- **COMMUNAL GARDENS**
- **NO ONWARD CHAIN**

Set in a sought after location within a delightful private setting, this top floor apartment offers comfortable, modern and versatile living space and has the benefit of no onward chain.

This property has a welcoming entrance hallway, leading to a light and spacious, double aspect open plan reception/dining room which leads into a modern, white gloss kitchen with ample wall and base units.





There are two good sized bedrooms, one of which is currently being used as a walk in dressing room with fitted wardrobes and a fully tiled bathroom with under sink storage.

Externally, there are lovely communal gardens. The apartment also comes with one allocated parking space and residents parking.

Rickmansworth town centre has a wide range of boutique shops, coffee houses, restaurants and major supermarkets. The Metropolitan and Chiltern line train services connect you to London Baker Street, Marylebone Station and beyond. The M25 motorway is available at both junction 17 and 18, connecting you to the national motorway network. Major London airports are also within reach. The area is well served for good quality private and state schools for all ages. Chorleywood and Rickmansworth offer everything for the sporting individual from rugby, cricket, football, tennis, horse riding and golf. Rickmansworth Aquadrome is an ideal setting for walks, sailing, fishing and water skiing.

Tenure: Leasehold

Lease Length: 95 years

Service Charge/Ground Rent: £911.00 pa

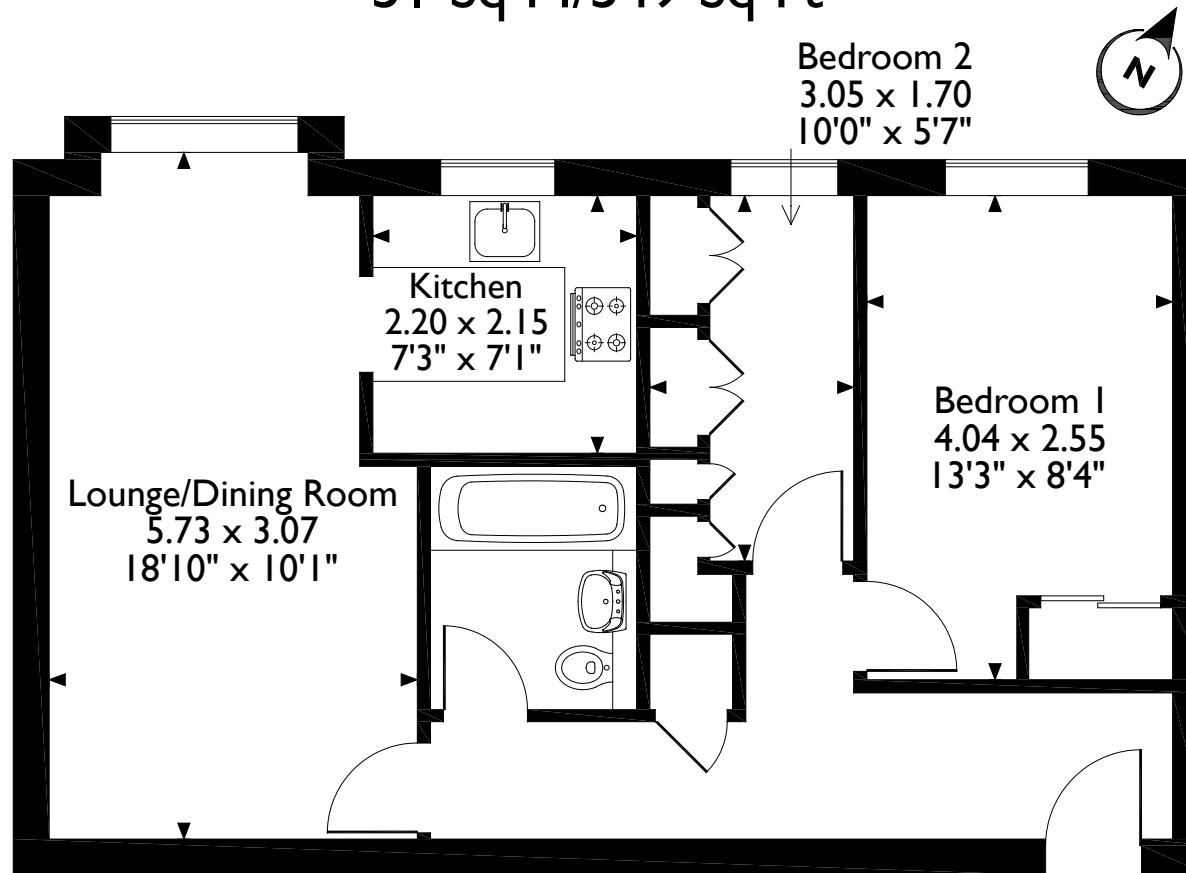
Local Authority: Three Rivers District Council

Council Tax: Band D

Energy Efficiency Rating: Band C



Thompson Way, Rickmansworth, Hertfordshire  
Approximate Gross Internal Area  
51 Sq M/549 Sq Ft



**Second Floor Flat**

Please note that the location of doors, windows and other items are approximate and this floorplan is to be used for illustrative purposes only. Unauthorized reproduction is prohibited.



130 High St, Rickmansworth WD3 1AB  
Tel: 01923 777762 rickmansworth@robsonswb.com  
[www.robsonswb.com](http://www.robsonswb.com)

