



Eagle Point, City Road, Shoreditch, London EC1V
£625 pw

> 1 Bedroom > 1 Bathroom > Furnished

TAVISTOCKBOW
RESIDENTIAL



- › One bedroom
- › One shower room
- › 24 hour concierge
- › Residents leisure facilities
- › Fantastic views
- › Fully Furnished
- › Bike storage
- › Secure underground parking
- › Available early August
- › Close to Old Street tube station

A superb one bedroom apartment on the 19th floor of this modern development in a great location in Shoreditch. Eagle Point boasts a 24 hour concierge, secure underground parking and bike storage, residents leisure facilities including a gym, sauna, plunge

pool and cinema. The apartment has fantastic views across London, air conditioning and an open plan living room. Available from early August.





WHAT WE LOVE:

- The views!
- The location
- The residents facilities
- The swimming pool
- The 24 hour concierge.

WHAT YOU NEED TO KNOW

- 19th floor with lift access
- Hackney council tax band F
- Secure underground parking available
- Bike Storage
- Close to Old Street tube station.



Floorplan

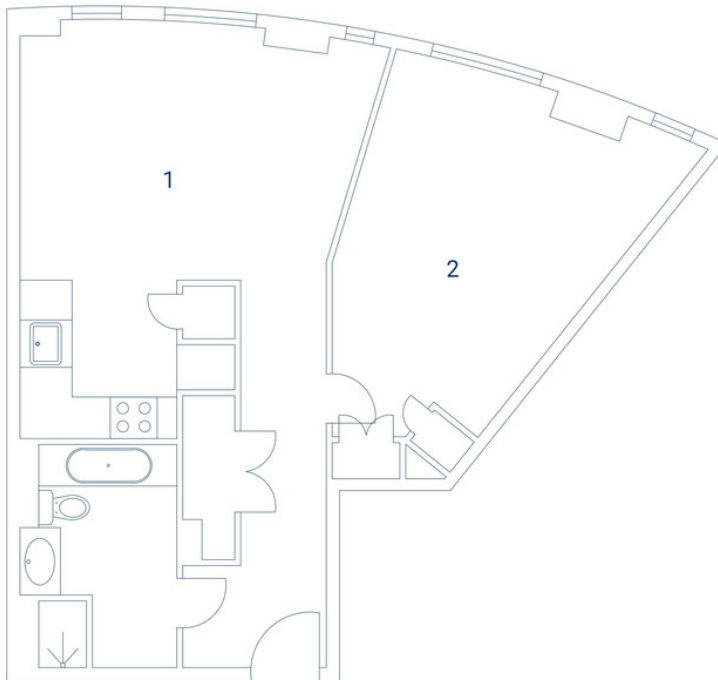
Eagle Point, EC1V

Approximate Gross Internal Area 56 sq m / 604 sq ft

Twentieth Floor

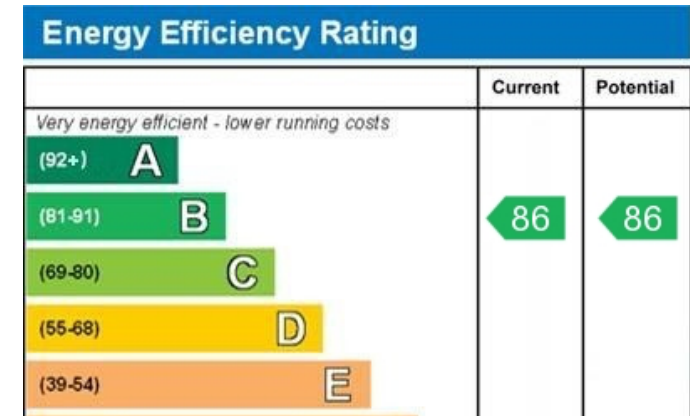
1 Living /
Kitchen /
Dining
5.27 x 5.73M
17'2" x 18'7"

2 Bedroom
4.05 x 3.31M
13'2" x 10'8"



Floorplan produced for Tavistock Bow. Illustration for identification purposes only and not to scale. All measurements are approximate and not to be relied upon.

EPC



About Us

Tavistock Bow is an independent residential agency based in Covent Garden. We are niche, boutique, creative, knowledgeable, professional and approachable. We love what we do and that's why we do it.

Contact Us

- a.** 21 New Row, Covent Garden, WC2N 4LE
 - t.** 020 7477 2177
 - e.** hello@tavistockbow.com
 - w.** tavistockbow.com
- /tavistockbow

/tavistockbow

@tavistockbow

