



Thomas  
jackson  
ESTATE AGENTS



Northumberland Avenue, Cliftonville, CT9 3BN

- Purpose Built
- No Chain
- Communal Gardens
- Garage en bloc

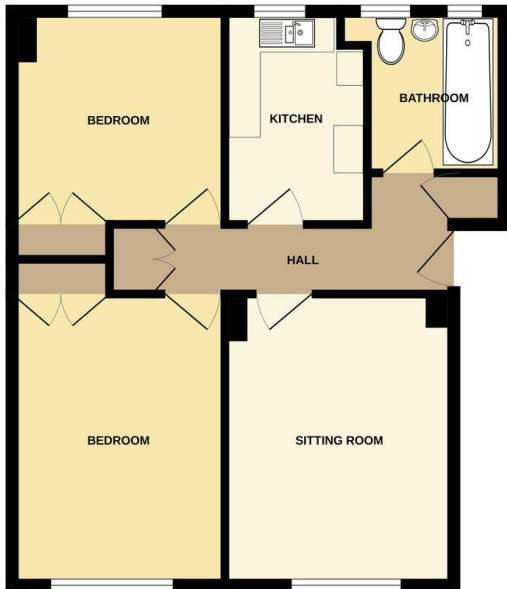
**Asking Price Of £187,000**

EPC Rating '55'





GROUND FLOOR



152 Northdown Road  
Cliftonville  
Margate  
Kent  
CT9 2QN

www.thomasjackson.biz  
01843 221000  
sales@thomasjackson.biz

Agents Note: Whilst every care has been taken to prepare these particulars, they are for guidance purposes only. All measurements are approximate and for general guidance purposes only and whilst every care has been taken to ensure their accuracy, they should not be relied upon and potential buyers/tenants are advised to recheck the measurements

