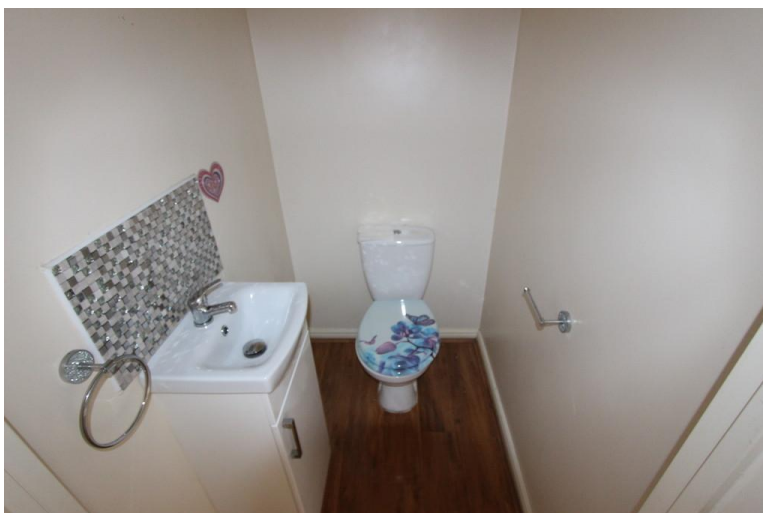




Black and White
CLEARLY A BETTER SERVICE

6 CARDIFF GROVE, MARSTON GREEN , BIRMINGHAM, B37
5EY **ASKING PRICE OF £249,950**





3 Bedroom Semi Detached in Marston Green, this well-presented property is a must see, light and modern you could move straight in.

Close to local schools, shops, and transport links with Marston Green Train station in walking distance.

call today to arrange a viewing.

Ground Floor

Entrance Hall

uPVC double glazed entrance door, Stairs, door to:

Kitchen

2.98m (9'9") x 2.44m (8')

Fitted with a range of base and eye level units with worktop space over with ceramic 1+1/2 bowl sink with single drainer, uPVC double glazed window to front.

WC

Fitted with two piece suite comprising, wash hand basin and low-level WC.



Lounge

4.17m (13'8") x 3.65m (12')

Fully laminated throughout, Upvc double glazed Window to rear and side, under-stairs storage cupboard, double radiator, Upvc double glazed French door leading to rear garden and various PowerPoints.

Garage

Single garage, with an up and over door and access to rear Garden.



First Floor

Landing

Fitted Carpet throughout, doors to

Bathroom

Fitted with three-piece suite comprising bath, wash hand basin with fitted shower over and low-level WC.



Bedroom 1

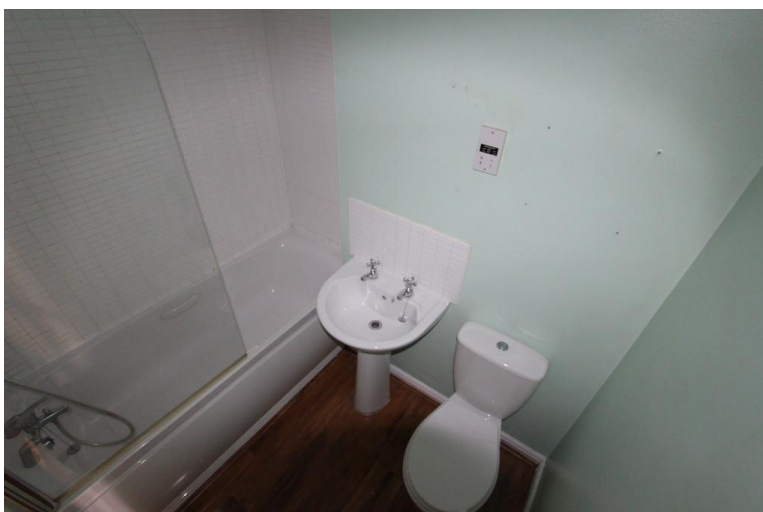
3.65m (12') x 2.73m (8'11")

UPVC double glazed window to rear, radiator, and various PowerPoints.

Bedroom 2

3.46m (11'4") x 1.70m (5'7")

UPVC double glazed window to front, radiator and various PowerPoints.



Bedroom 3

2.46m (8'1") x 2.04m (6'8")

UPVC double glazed window to front, radiator and various PowerPoints.

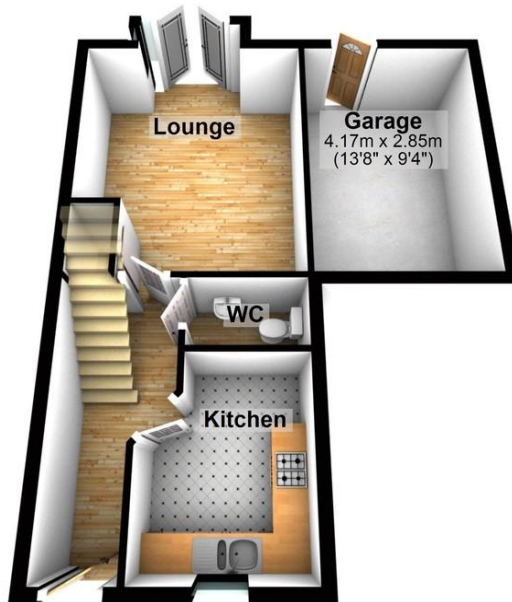


OUTSIDE:

Front garden with a variety of plants, driveway to the side leading to garage with space for two cars.

Enclosed private rear garden with various mixed plants, mainly laid to Astro Turf, small, paved patio area.

Ground Floor



First Floor

