



**LAWRENCE RAND**

**Brixham Crescent, Ruislip**

**£500,000**



## Brixham Crescent

Ruislip, Ruislip

A three bedroom terraced house situated on this quiet residential road in close proximity to Ruislip Manor's amenities. Benefits include NO ONWARD CHAIN and potential to extend (stpp).

Council Tax band: D

Tenure: Freehold

- NO CHAIN
- Three bedrooms
- Through lounge
- Off street parking
- 50' rear garden
- Quite residential road
- Close to tube



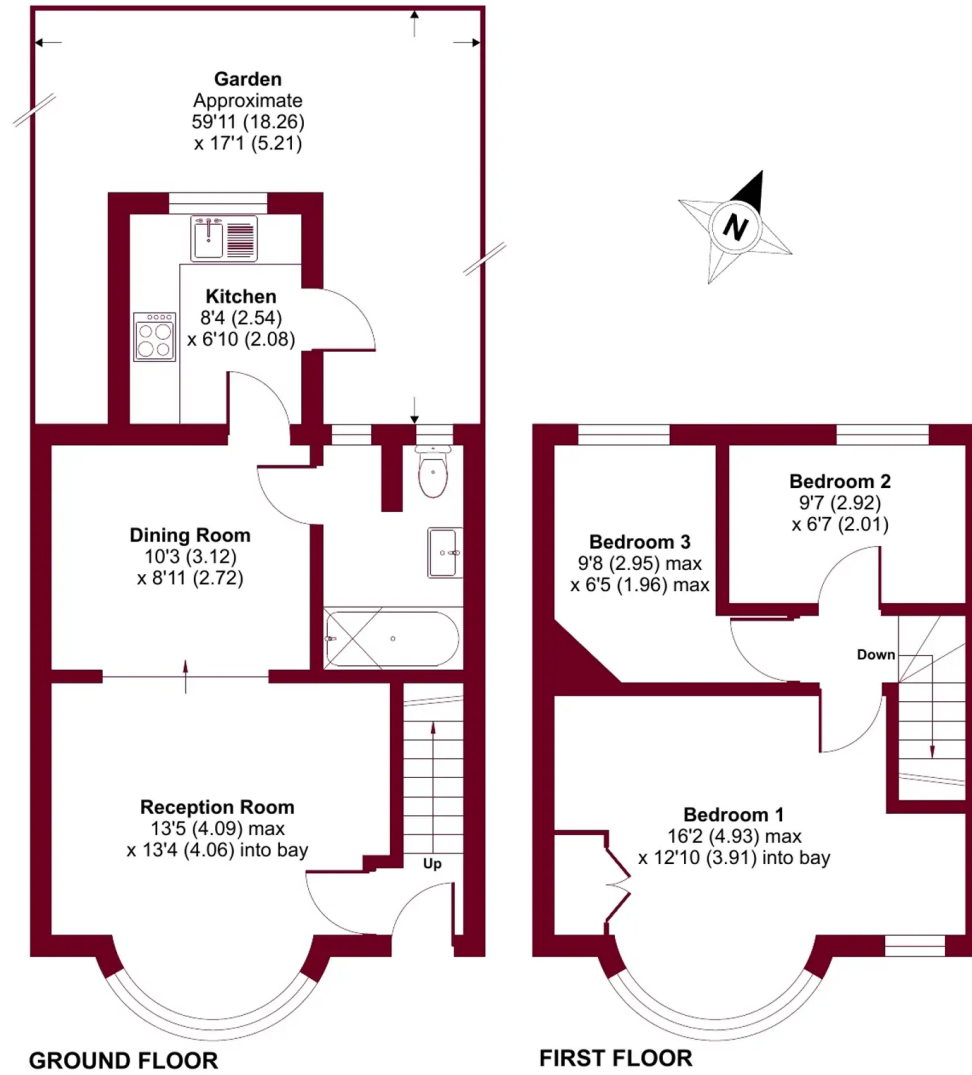




# Brixham Crescent, Ruislip, HA4

Approximate Area = 737 sq ft / 68.4 sq m

For identification only - Not to scale





## Lawrence Rand

Lawrence Rand, 106 Victoria Road - HA4 0AL

01895 632211

[Info@lawrence-rand.co.uk](mailto:Info@lawrence-rand.co.uk)

[www.lawrence-rand.co.uk/](http://www.lawrence-rand.co.uk/)



**LAWRENCE RAND**