



Kents Row, Grove

Guide Price £325,000

Wantage

Simpsons

The Proactive Agent



SCAN THE
QR CODE
FOR DETAILS



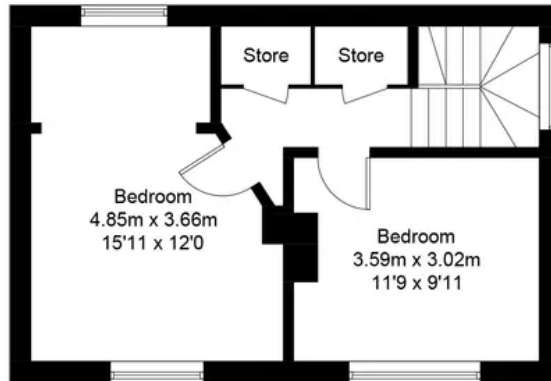


Kents Row, OX12

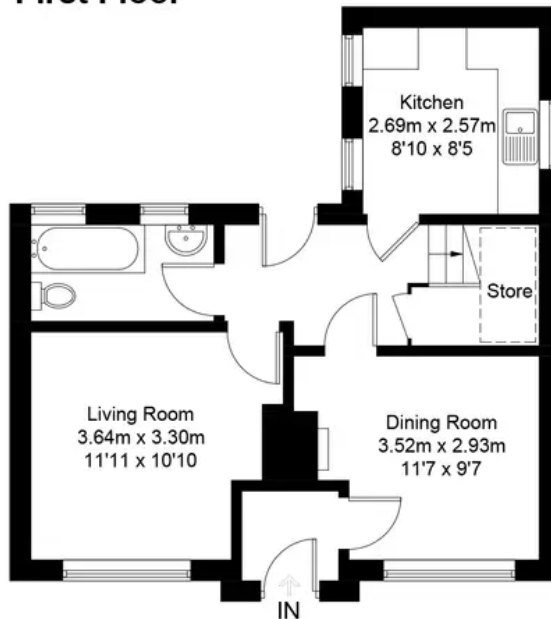
Approximate Gross Internal Area = 79.2 sq m / 852 sq ft

External Area = 187 sq m / 2013 sq ft

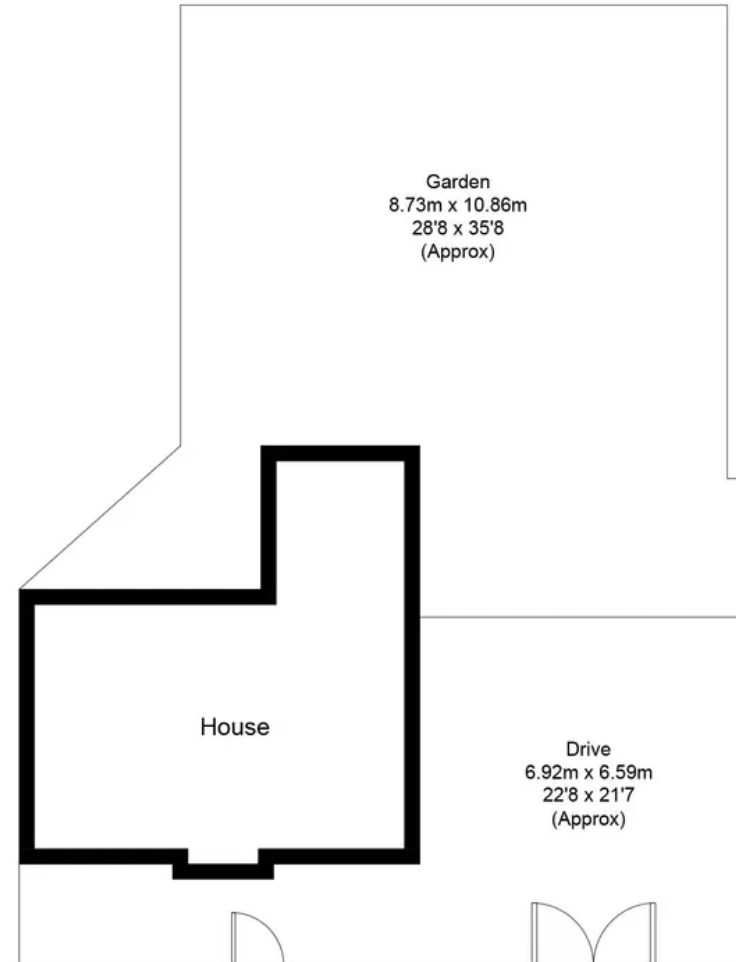
For identification only - Not to scale



First Floor



Ground Floor



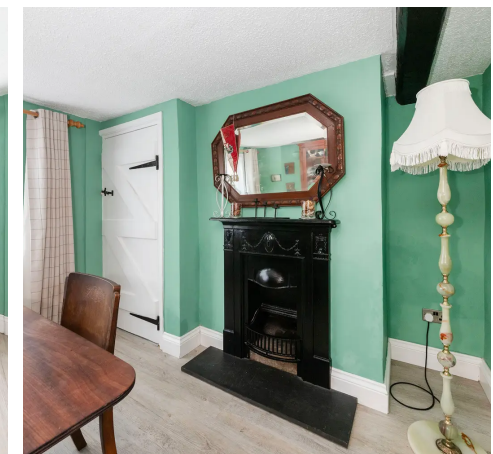
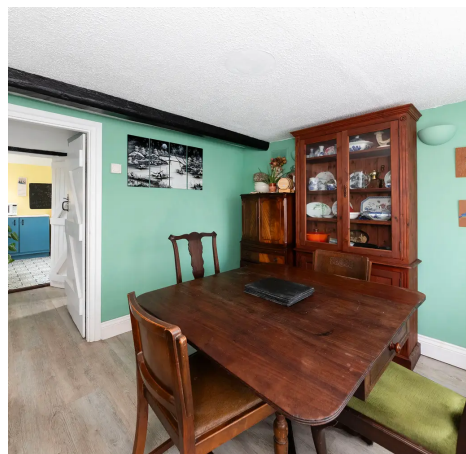
Kents Row

Grove, Wantage

This very charming two bedroom cottage has a large garden and scope to enhance and extend STPP. It's conveniently located close to shops, amenities and schools.

Council Tax band: C

Tenure: Freehold



SCAN THE
QR CODE
TO BOOK
YOUR VIEWING



