

WILLOW WALK

LONDON SW18

A collection of 1, 2 & 3 bedroom
Shared Ownership apartments

Floorplans



Computer generated image is indicative only.

Bringing a new dimension to Wandsworth's rich fabric

The new apartments at Willow Walk are an exciting opportunity to make a thriving London neighbourhood your home.

Here in the heart of historic Wandsworth, just moments from the riverside and vibrant town centre, Willow Walk offers a new close-knit community in which to weave your own story.

Within this desirable Peabody development there's a place for you, with a total of 84 apartments across 13 floors available through Shared Ownership, including 60 two-bedroom, 18 one-bedroom and 6 spacious three-bedroom apartments.

Willow Walk's contemporary architecture has been carefully designed to blend into and complement its established surroundings through an attractive mix of materials, pedestrianised walkways, leafy courtyards and green terraces below.

 Peabody



Computer generated image is indicative only.

Specification





Computer generated images are indicative only.

Specification

Living / Kitchen / Dining

- ◇ Matte indigo blue, handleless kitchen units and underside LED strip lighting to wall units
- ◇ White quartz worktops with matching plain white splashback and upstands
- ◇ Under mounted single bowl stainless steel sink with polished chrome tap
- ◇ AEG frameless touch ceramic hob with discreet hood
- ◇ AEG integrated stainless steel multi-function oven
- ◇ AEG integrated fridge / freezer
- ◇ AEG fully integrated dishwasher
- ◇ Integrated recycling bin
- ◇ Grey oak-effect laminate flooring

Bathroom / En-suite

- ◇ White bath and wall mounted chrome overhead hand shower and clear glass bath screen
- ◇ Large format tiles in grey to bath, shower and sink areas
- ◇ Full height and width mirror above white semi-recessed basin with chrome mixer tap
- ◇ Chrome clear glass shower screen and wall-mounted chrome overhead hand shower
- ◇ WC with soft close seat and chrome flushplate
- ◇ Chrome towel radiators

Bedroom(s)

- ◇ Cormar grey carpet with timber thresholds
- ◇ Pendant lighting
- ◇ Built-in wardrobe with stone matt panel and sliding white glass doors to main bedrooms

Security & Peace of mind

- ◇ Video entry system
- ◇ Sprinkler system
- ◇ Wired smoke detectors & heat alarms

Communal

- ◇ High quality, durable carpeting, and tiled floor finishes throughout
- ◇ Video entry system
- ◇ Secure bicycle storage

Utility / Electricals

- ◇ Heat and hot water Guru metering system to each home
- ◇ HIU communal heating system
- ◇ Chrome towel radiators to all bathrooms, white radiators to all other rooms
- ◇ Recessed downlights fitted to living/dining area and bathrooms
- ◇ Shaver sockets to all bathrooms and en-suites
- ◇ AEG freestanding washing machine to hallway storage cupboards
- ◇ Communal aerial, telephone and satellite system wired for Sky Q and Freeview television to living room and bedroom 1 (Master bedroom)*
- ◇ BT Fibre Optic Broadband connection

General

- ◇ Mechanical Ventilation with Heat Recovery system (MVHR), with controllers in kitchen and bathrooms
- ◇ Communal heating system
- ◇ NHBC 10 Year Building Warranty + additional 2 years cover
- ◇ 12 month defect cover from PC***
- ◇ Balconies to all homes (dark wood decking)
- ◇ Resident only communal podium garden
- ◇ 2 years Santander Cycles Membership (one per household)
- ◇ £100 voucher contribution towards a local car club scheme (first two years)
- ◇ 3 wheelchair adaptable apartments available (apartment 307, 407 and 507)**



Computer generated image is indicative only.

*Leaseholder will be responsible for Sky Q installation and subscription at additional cost.

**Applies to selected apartments only, please see floorplans and speak to sales advisor for further information.

***From practical completion (PC) of the development.

Whilst every effort has been taken to ensure the accuracy of the information provided, the specification has been supplied as a guide and Peabody reserve the right to amend the specification as necessary and without notice. Please ask your sales advisor for more information.

Site Plan

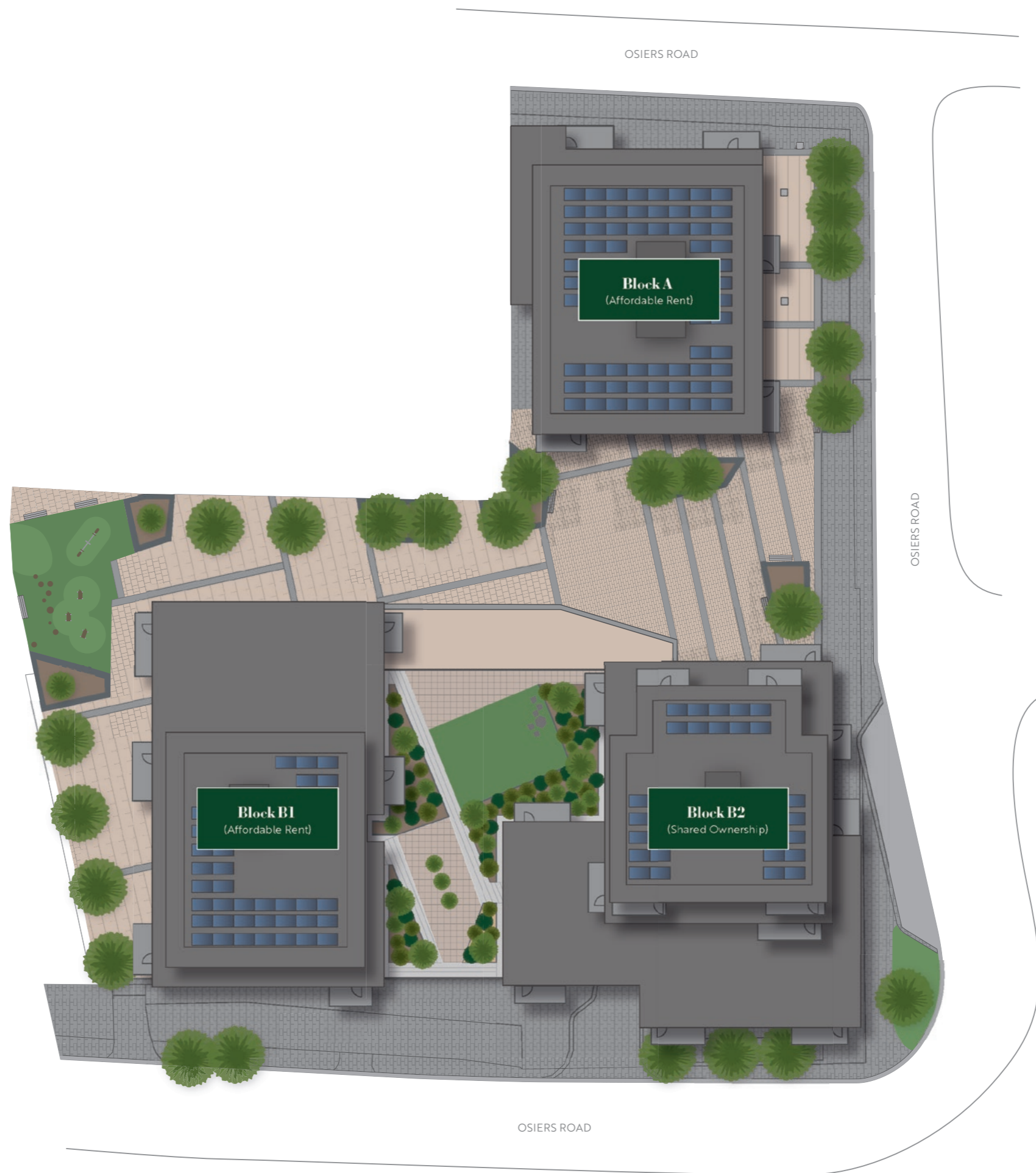


River Thames
3 minutes

Wandsworth Park
4 minutes

Wandsworth Town Station
13 minutes

East Putney
15 minutes

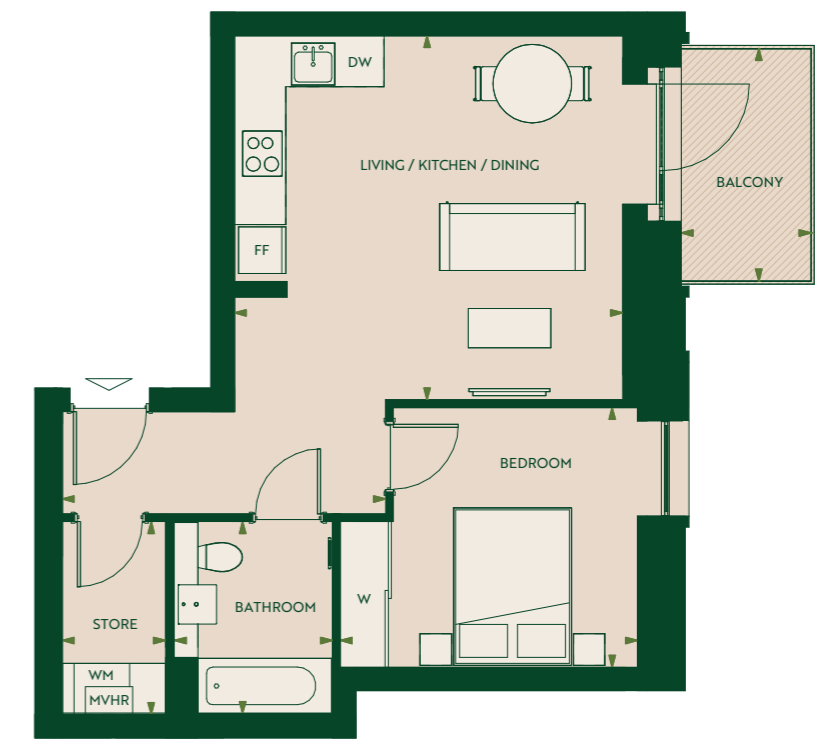


I Bedroom Apartment



Apartment Dimensions*

| | | |
|---------------------------|--------------------|----------------|
| Total Area | 55.0m ² | 591.3 sqft |
| Total Internal Area | 50.1m ² | 538.8 sqft |
| Total External Area | 4.9m ² | 52.5 sqft |
| Living / Kitchen / Dining | 4.9m x 4.6m | 16'2" x 15'2" |
| Bedroom | 3.8m x 3.3m | 12'5" x 10'10" |
| Bathroom | 2.4m x 2.0m | 8'0" x 6'7" |
| Store | 2.5m x 1.3m | 8'0" x 4'4" |
| Balcony | 3.0m x 1.7m | 9'8" x 5'5" |



I Bedroom Apartments

Floor

| | | | |
|---|---|--|--|
| <p>02</p> <p>Apartment 202</p> | <p>03-09</p> <p>Apartments 302, 402, 502, 602, 702, 802, 902</p> | <p>10</p> <p>Apartment 1002</p> | <p>11</p> <p>Apartment 1102</p> |
|---|---|--|--|

Key

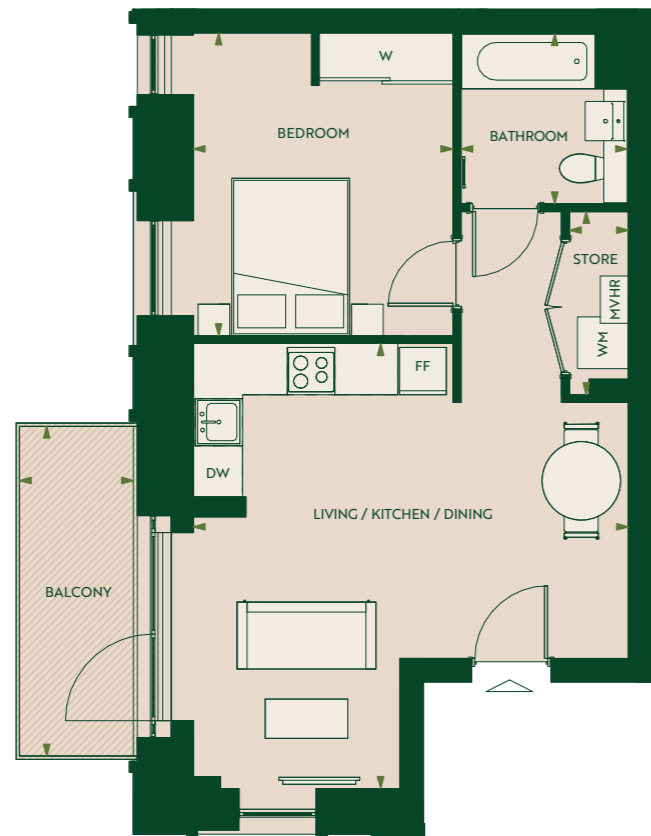
- FF Fridge / Freezer
- DW Dishwasher
- WM Washing Machine
- W Wardrobe
- MVHR Mechanical Ventilation with Heat Recovery

1 Bedroom Apartment



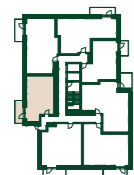
Apartment Dimensions*

| | | |
|---------------------------|--------------------|----------------|
| Total Area | 55.9m ² | 602.1 sqft |
| Total Internal Area | 49.6m ² | 534.4 sqft |
| Total External Area | 6.3m ² | 67.7 sqft |
| Living / Kitchen / Dining | 5.7m x 5.5m | 18'7" x 18'2" |
| Bedroom | 3.9m x 3.3m | 12'8" x 10'10" |
| Bathroom | 2.2m x 2.1m | 7'1" x 6'11" |
| Store | 2.3m x 0.8m | 7'8" x 2'6" |
| Balcony | 4.2m x 1.5m | 13'9" x 4'9" |



Floor

10



Apartment 1006

Key

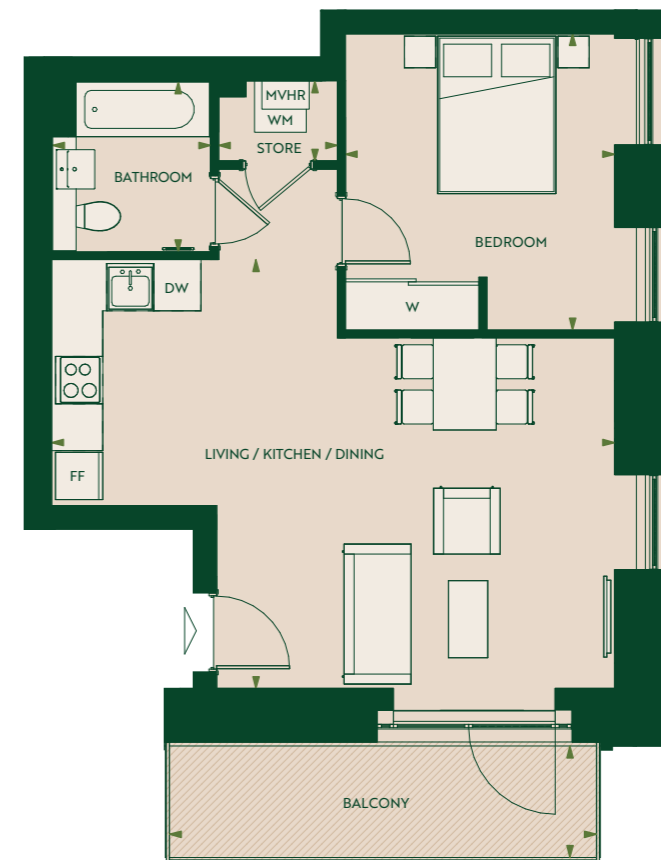
- FF Fridge / Freezer
- DW Dishwasher
- WM Washing Machine
- W Wardrobe
- MVHR Mechanical Ventilation with Heat Recovery

1 Bedroom Apartment



Apartment Dimensions*

| | | |
|---------------------------|--------------------|----------------|
| Total Area | 62.2m ² | 670.1 sqft |
| Total Internal Area | 54.1m ² | 582.4 sqft |
| Total External Area | 8.1m ² | 87.7 sqft |
| Living / Kitchen / Dining | 7.2m x 5.5m | 23'6" x 17'11" |
| Bedroom | 3.8m x 3.4m | 12'4" x 11'3" |
| Bathroom | 2.2m x 2.0m | 7'1" x 6'7" |
| Store | 1.5m x 1.0m | 5'0" x 3'4" |
| Balcony | 5.4m x 1.4m | 17'10" x 4'8" |



Floor

11



Apartment 1103

Key

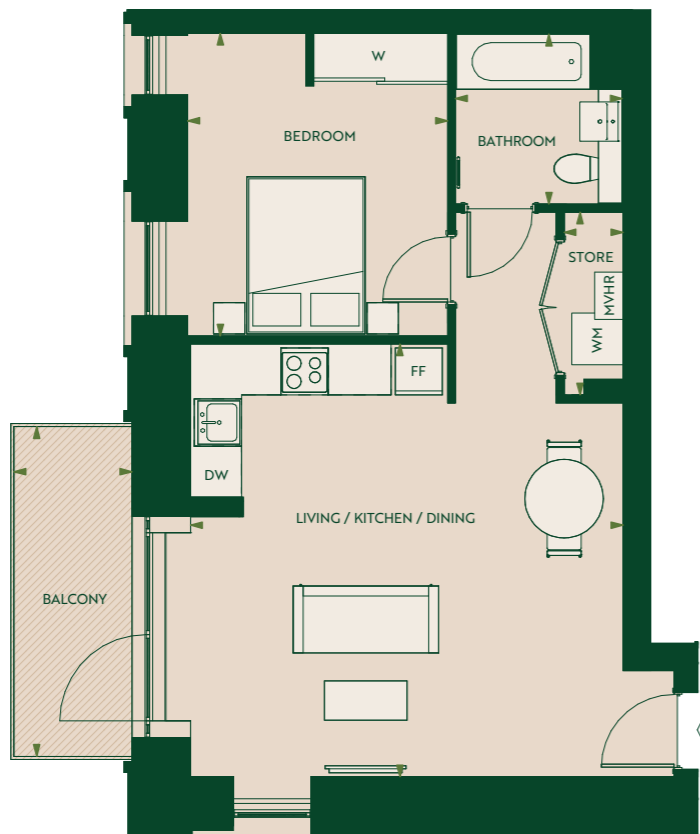
- FF Fridge / Freezer
- DW Dishwasher
- WM Washing Machine
- W Wardrobe
- MVHR Mechanical Ventilation with Heat Recovery

1 Bedroom Apartment

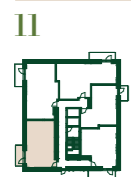


Apartment Dimensions*

| | | |
|---------------------------|--------------------|----------------|
| Total Area | 60.9m ² | 655.1 sqft |
| Total Internal Area | 54.6m ² | 587.4 sqft |
| Total External Area | 6.3m ² | 67.7 sqft |
| Living / Kitchen / Dining | 5.5m x 5.5m | 18'1" x 18'1" |
| Bedroom | 3.9m x 3.3m | 12'8" x 10'10" |
| Bathroom | 2.2m x 2.1m | 7'1" x 6'11" |
| Store | 2.3m x 0.8m | 7'8" x 2'6" |
| Balcony | 4.2m x 2.5m | 13'9" x 4'11" |

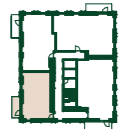


Floor



Apartment 1104

12



Apartment 1203

Key

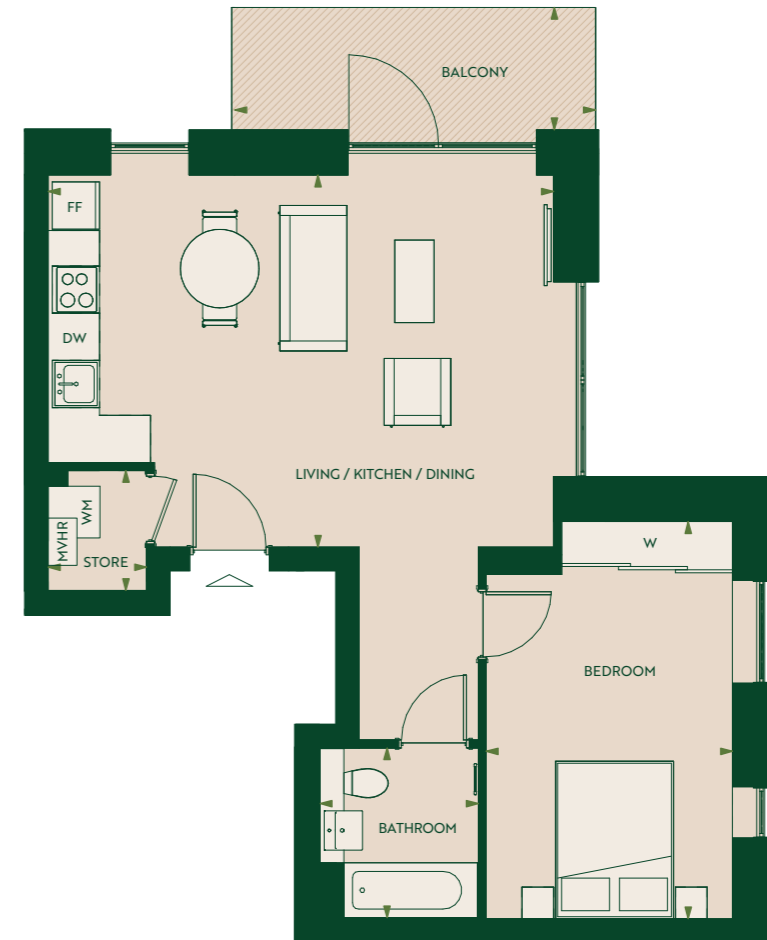
- FF Fridge / Freezer
- DW Dishwasher
- WM Washing Machine
- W Wardrobe
- MVHR Mechanical Ventilation with Heat Recovery

1 Bedroom Apartment



Apartment Dimensions*

| | | |
|---------------------------|--------------------|---------------|
| Total Area | 64.5m ² | 694.4 sqft |
| Total Internal Area | 57.0m ² | 613.3 sqft |
| Total External Area | 7.5m ² | 81.1 sqft |
| Living / Kitchen / Dining | 6.4m x 4.7m | 21'1" x 15'6" |
| Bedroom | 5.0m x 3.1m | 16'7" x 10'3" |
| Bathroom | 2.2m x 2.0m | 7'1" x 6'7" |
| Store | 1.5m x 1.3m | 5'0" x 4'1" |
| Balcony | 4.6m x 1.6m | 12'1" x 5'1" |



Floor



Apartment 1301

Key

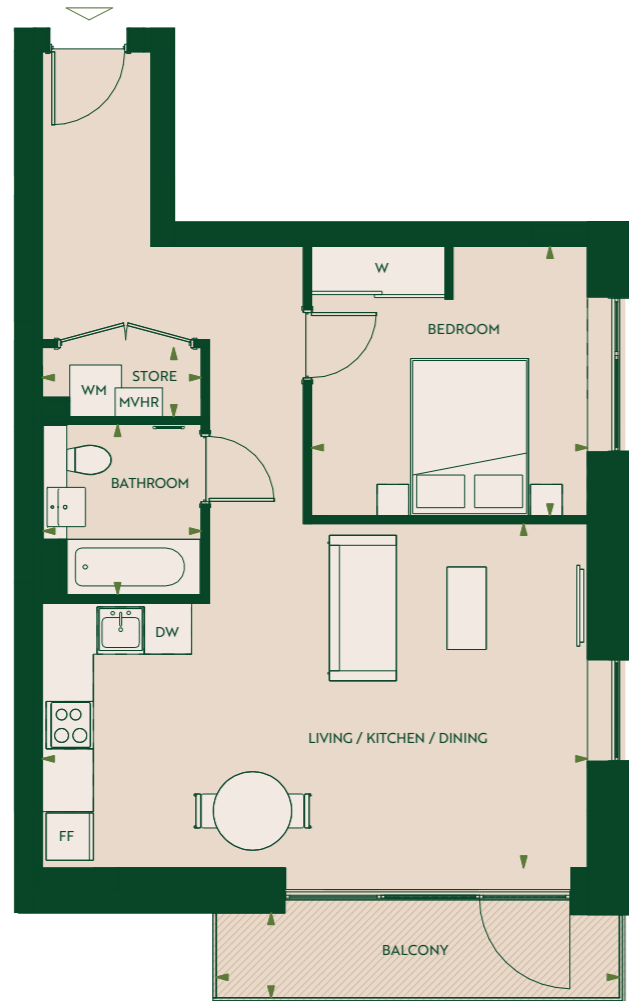
- FF Fridge / Freezer
- DW Dishwasher
- WM Washing Machine
- W Wardrobe
- MVHR Mechanical Ventilation with Heat Recovery

1 Bedroom Apartment



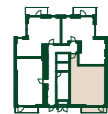
Apartment Dimensions*

| | | |
|---------------------------|--------------------|---------------|
| Total Area | 65.3m ² | 703.3 sqft |
| Total Internal Area | 59.2m ² | 637.3 sqft |
| Total External Area | 6.1m ² | 66.0 sqft |
| Living / Kitchen / Dining | 6.9m x 4.4m | 22'9" x 14'4" |
| Bedroom | 3.5m x 3.4m | 11'6" x 11'3" |
| Bathroom | 2.2m x 2.0m | 7'1" x 6'7" |
| Store | 2.0m x 0.9m | 6'8" x 2'9" |
| Balcony | 5.1m x 1.1m | 16'10" x 3'7" |



Floor

13



Apartment 1302

Key

- FF Fridge / Freezer
- DW Dishwasher
- WM Washing Machine
- W Wardrobe
- MVHR Mechanical Ventilation with Heat Recovery

1 Bedroom Apartment



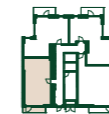
Apartment Dimensions*

| | | |
|---------------------------|--------------------|---------------|
| Total Area | 56.9m ² | 613.1 sqft |
| Total Internal Area | 51.3m ² | 552.4 sqft |
| Total External Area | 5.6m ² | 60.7 sqft |
| Living / Kitchen / Dining | 5.4m x 5.3m | 17'7" x 17'5" |
| Bedroom | 4.0m x 3.2m | 13'0" x 10'6" |
| Bathroom | 2.2m x 2.2m | 7'1" x 7'1" |
| Store | 1.9m x 0.8m | 6'2" x 2'7" |
| Balcony | 4.7m x 1.1m | 15'4" x 3'7" |



Floor

13



Apartment 1303

Key

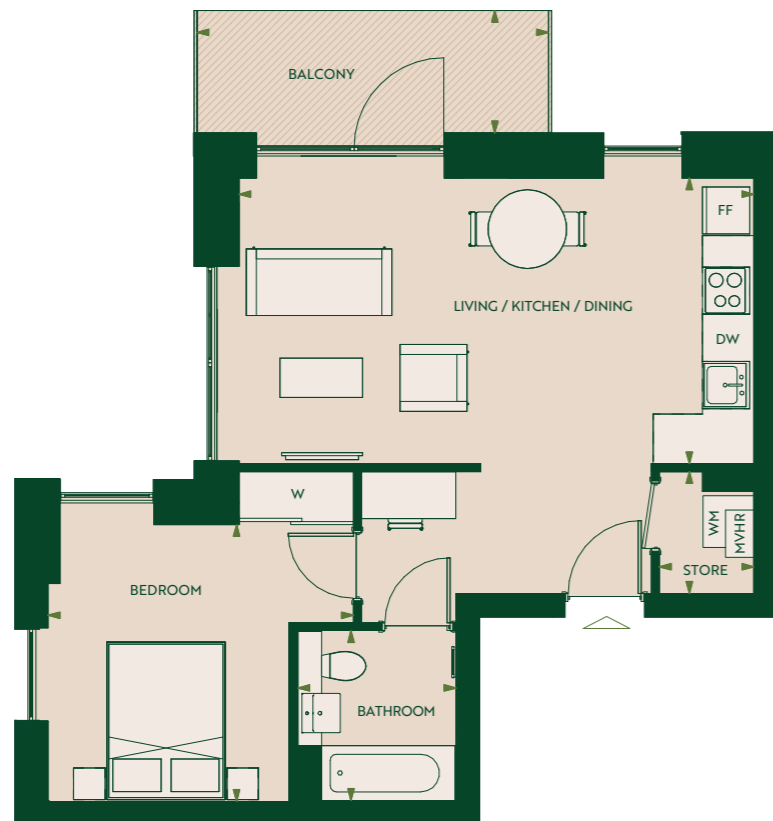
- FF Fridge / Freezer
- DW Dishwasher
- WM Washing Machine
- W Wardrobe
- MVHR Mechanical Ventilation with Heat Recovery

1 Bedroom Apartment



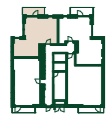
Apartment Dimensions*

| | | |
|---------------------------|--------------------|----------------|
| Total Area | 59.7m ² | 641.7 sqft |
| Total Internal Area | 52.3m ² | 562.6 sqft |
| Total External Area | 7.4m ² | 79.1 sqft |
| Living / Kitchen / Dining | 6.5m x 3.6m | 21'6" x 11'11" |
| Bedroom | 3.9m x 3.5m | 12'9" x 11'7" |
| Bathroom | 2.2m x 2.0m | 7'1" x 6'7" |
| Store | 1.6m x 1.2m | 5'1" x 3'11" |
| Balcony | 4.5m x 1.6m | 14'8" x 5'1" |



Floor

13



Apartment
1304

Key

| | |
|------|---|
| FF | Fridge / Freezer |
| DW | Dishwasher |
| WM | Washing Machine |
| W | Wardrobe |
| MVHR | Mechanical Ventilation with Heat Recovery |

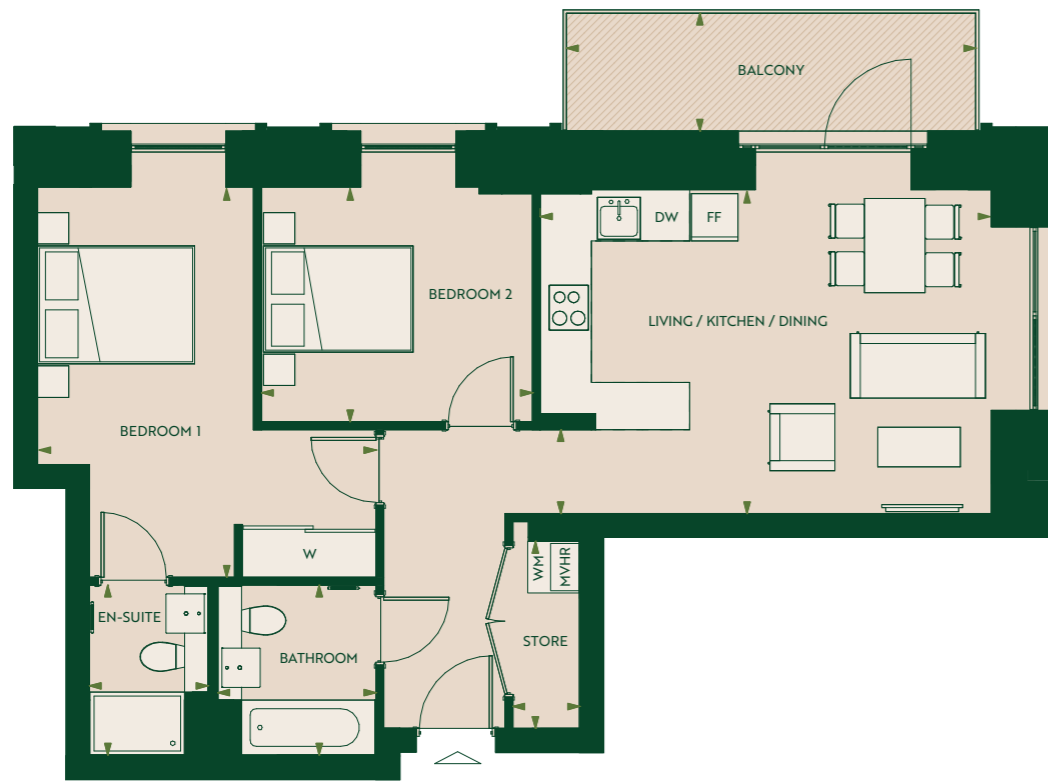
2 Bedroom Apartments

2 Bedroom Apartment

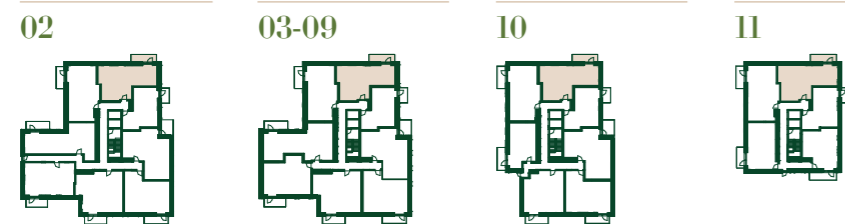


Apartment Dimensions*

| | | |
|---------------------------|--------------------|----------------|
| Total Area | 77.8m ² | 837.5 sqft |
| Total Internal Area | 70.0m ² | 753.5 sqft |
| Total External Area | 7.8m ² | 84 sqft |
| Living / Kitchen / Dining | 5.7m x 4.1m | 18'10" x 13'6" |
| Bedroom 1 | 5.0m x 4.3m | 16'3" x 14'2" |
| Bedroom 2 | 3.4m x 3.0m | 11'4" x 9'10" |
| Bathroom | 2.2m x 2.0m | 7'1" x 6'7" |
| En-suite | 2.2m x 1.5m | 7'1" x 4'11" |
| Store | 2.4m x 0.9m | 7'10" x 2'9" |
| Balcony | 5.2m x 1.5m | 17'1" x 4'11" |



Floor



Apartment 201
 Apartments 301, 401, 501, 601, 701, 801, 901
 Apartment 1001
 Apartment 1101

Key

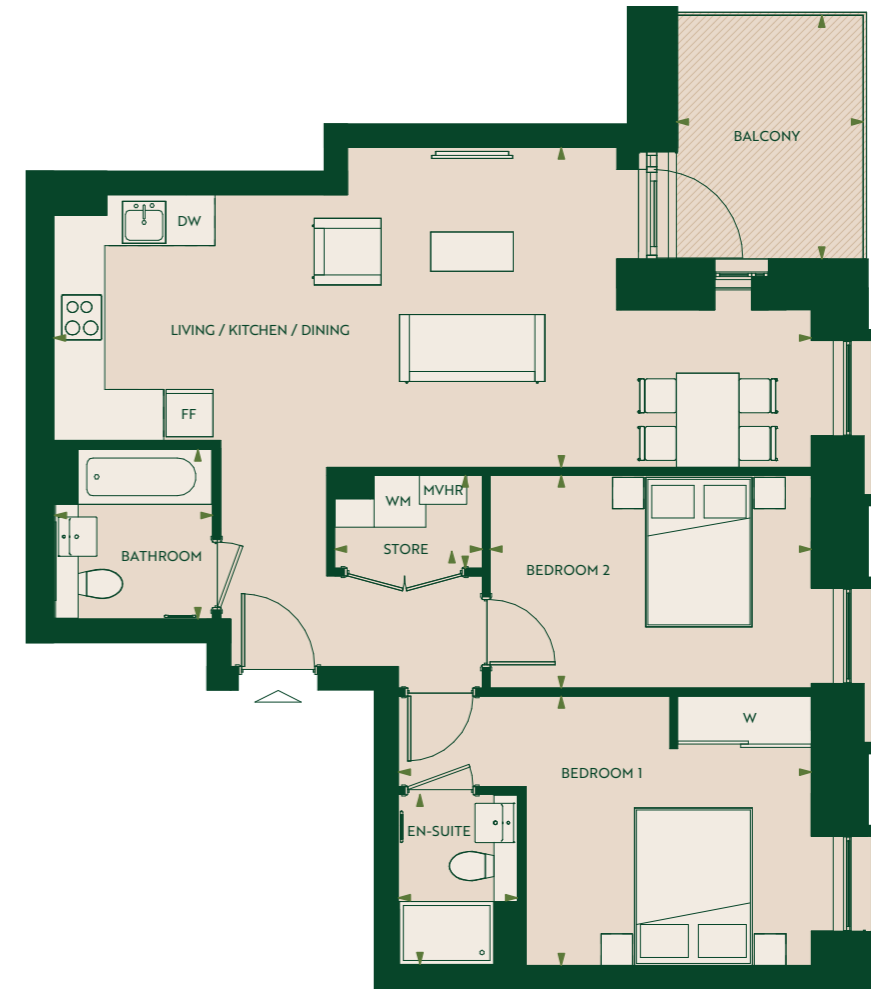
- FF Fridge / Freezer
- DW Dishwasher
- WM Washing Machine
- W Wardrobe
- MVHR Mechanical Ventilation with Heat Recovery

2 Bedroom Apartment

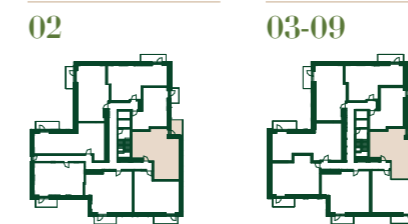


Apartment Dimensions*

| | | |
|---------------------------|--------------------|---------------|
| Total Area | 83.9m ² | 902.4 sqft |
| Total Internal Area | 76.6m ² | 824 sqft |
| Total External Area | 7.3m ² | 78.4 sqft |
| Living / Kitchen / Dining | 9.6m x 4.1m | 31'7" x 13'4" |
| Bedroom 1 | 5.2m x 3.4m | 17'3" x 11'3" |
| Bedroom 2 | 4.1m x 2.7m | 13'5" x 8'11" |
| Bathroom | 2.2m x 2.0m | 7'1" x 6'7" |
| En-suite | 2.2m x 1.5m | 7'1" x 6'7" |
| Store | 1.9m x 1.2m | 6'2" x 3'10" |
| Balcony | 3.1m x 2.4m | 10'2" x 7'10" |



Floor



Apartment 203
 Apartments 303, 403, 503, 603, 703, 803, 903

Key

- FF Fridge / Freezer
- DW Dishwasher
- WM Washing Machine
- W Wardrobe
- MVHR Mechanical Ventilation with Heat Recovery

2 Bedroom Apartment

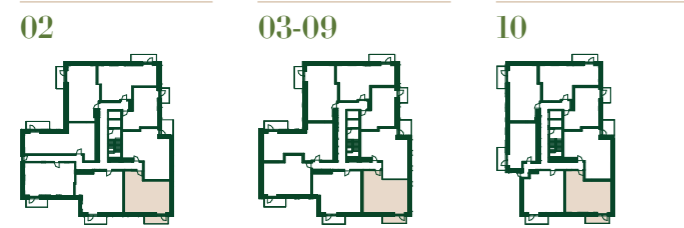


Apartment Dimensions*

| | | |
|---------------------------|--------------------|----------------|
| Total Area | 77.1m ² | 830.6 sqft |
| Total Internal Area | 69.9m ² | 752.6 sqft |
| Total External Area | 7.2m ² | 78.0 sqft |
| Living / Kitchen / Dining | 6.5m x 3.5m | 21'3" x 11'6" |
| Bedroom 1 | 4.8m x 2.7m | 15'10" x 9'0" |
| Bedroom 2 | 4.1m x 3.0m | 12'5" x 9'8" |
| Bathroom | 2.2m x 2.0m | 7'1" x 6'7" |
| En-suite | 2.2m x 1.5m | 7'1" x 4'11" |
| Store | 2.0m x 1.1m | 6'7" x 3'7" |
| Balcony | 4.8m x 1.5m | 15'10" x 4'11" |



Floor



Apartment 204

Apartments 304, 404, 504, 604, 704, 804, 904

Apartment 1004

Key

- TU Tall Unit
- FF Fridge / Freezer
- DW Dishwasher
- WM Washing Machine
- W Wardrobe
- MVHR Mechanical Ventilation with Heat Recovery

2 Bedroom Apartment

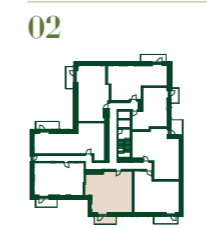


Apartment Dimensions*

| | | |
|---------------------------|--------------------|---------------|
| Total Area | 83.9m ² | 923.9 sqft |
| Total Internal Area | 76.5m ² | 823.9 sqft |
| Total External Area | 7.4m ² | 80.0 sqft |
| Living / Kitchen / Dining | 5.2m x 5.0m | 17'0" x 16'3" |
| Bedroom 1 | 5.0m x 3.0m | 16'3" x 9'10" |
| Bedroom 2 | 4.4m x 3.6m | 14'4" x 11'8" |
| Bathroom | 2.2m x 2.0m | 7'1" x 6'7" |
| En-suite | 2.2m x 1.7m | 7'1" x 5'9" |
| Store | 1.7m x 1.2m | 5'9" x 3'11" |
| Balcony | 4.5m x 1.6m | 14'10" x 5'5" |



Floor



Apartment 205

Key

- FF Fridge / Freezer
- DW Dishwasher
- WM Washing Machine
- W Wardrobe
- MVHR Mechanical Ventilation with Heat Recovery

2 Bedroom Apartment



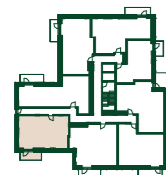
Apartment Dimensions*

| | | |
|---------------------------|--------------------|---------------|
| Total Area | 75.4m ² | 812.1 sqft |
| Total Internal Area | 68.2m ² | 734.5 sqft |
| Total External Area | 7.2m ² | 77.6 sqft |
| Living / Kitchen / Dining | 6.6m x 3.5m | 21'6" x 11'4" |
| Bedroom 1 | 4.5m x 2.8m | 12'8" x 9'0" |
| Bedroom 2 | 3.6m x 3.1m | 11'8" x 10'4" |
| Bathroom | 2.2m x 2.0m | 7'1" x 6'7" |
| En-suite | 2.2m x 1.7m | 7'1" x 5'8" |
| Store | 2.2m x 1.0m | 7'2" x 3'5" |
| Balcony | 4.4m x 1.7m | 14'4" x 5'5" |



Floor

02



Apartment 206

Key

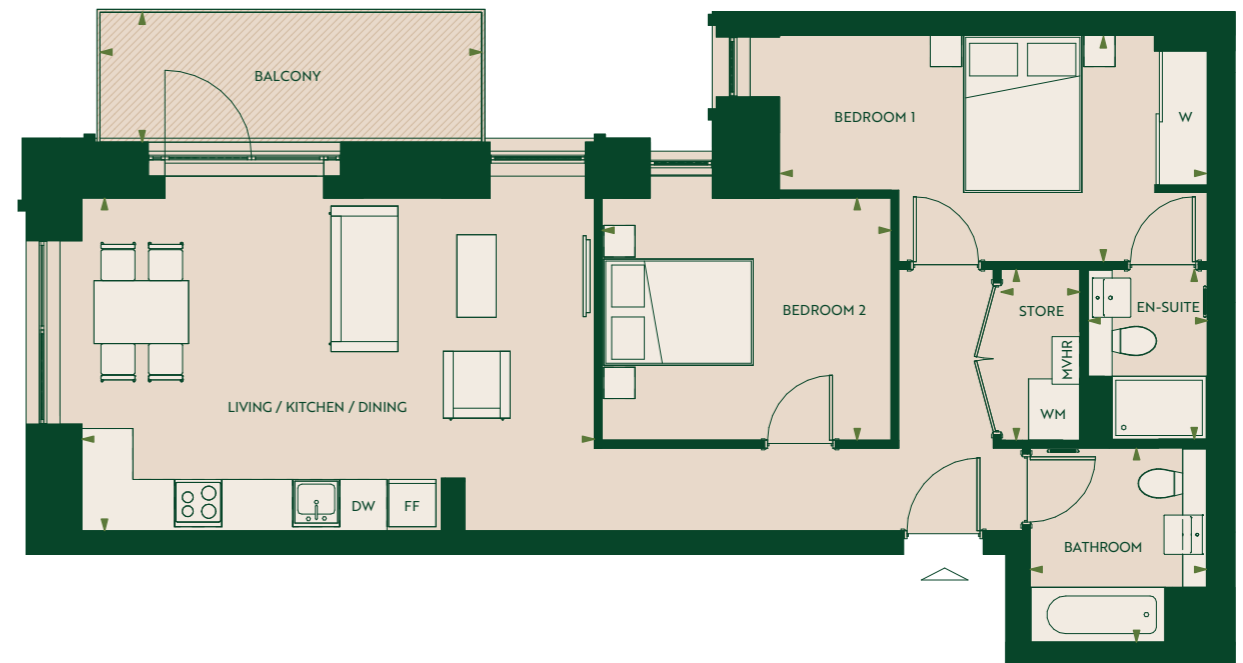
- TU Tall Unit
- FF Fridge / Freezer
- DW Dishwasher
- WM Washing Machine
- W Wardrobe
- MVHR Mechanical Ventilation with Heat Recovery

2 Bedroom Apartment



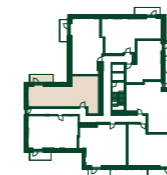
Apartment Dimensions*

| | | |
|---------------------------|--------------------|----------------|
| Total Area | 85.1m ² | 915.5 sqft |
| Total Internal Area | 77.1m ² | 829.4 sqft |
| Total External Area | 8.0m ² | 86.1 sqft |
| Living / Kitchen / Dining | 6.5m x 4.2m | 21'4" x 13'11" |
| Bedroom 1 | 5.5m x 2.9m | 17'11" x 9'5" |
| Bedroom 2 | 3.7m x 3.1m | 12'1" x 10'1" |
| Bathroom | 2.5m x 2.2m | 8'1" x 7'4" |
| En-suite | 2.2m x 1.5m | 7'1" x 4'11" |
| Store | 2.2m x 1.0m | 7'1" x 3'3" |
| Balcony | 4.8m x 1.7m | 15'11" x 5'5" |



Floor

02



Apartment 207

Key

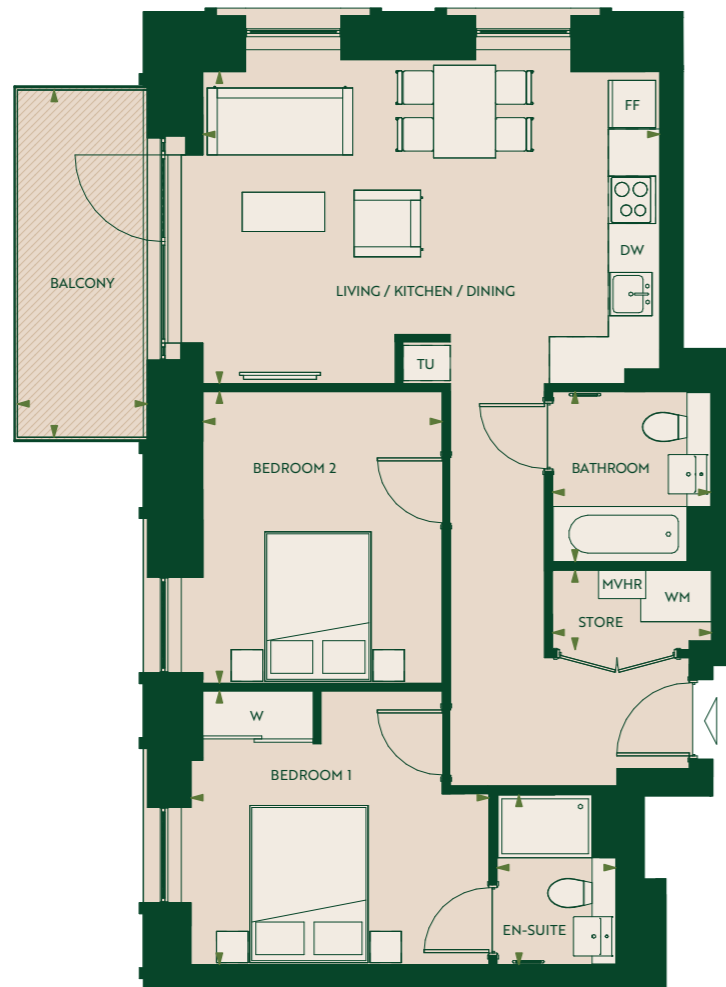
- FF Fridge / Freezer
- DW Dishwasher
- WM Washing Machine
- W Wardrobe
- MVHR Mechanical Ventilation with Heat Recovery

2 Bedroom Apartment

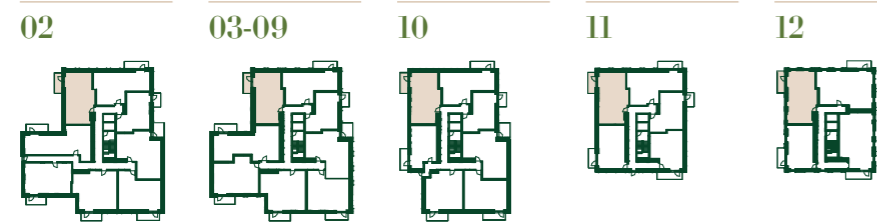


Apartment Dimensions*

| | | |
|---------------------------|--------------------|---------------|
| Total Area | 77.3m ² | 831.5 sqft |
| Total Internal Area | 70.0m ² | 753.0 sqft |
| Total External Area | 7.3m ² | 78.5 sqft |
| Living / Kitchen / Dining | 5.8m x 4.0m | 19'1" x 13'0" |
| Bedroom 1 | 3.8m x 3.5m | 12'5" x 11'5" |
| Bedroom 2 | 3.7m x 3.0m | 12'2" x 10'0" |
| Bathroom | 2.2m x 2.0m | 7'1" x 6'7" |
| En-suite | 2.2m x 1.5m | 7'1" x 4'11" |
| Store | 2.0m x 1.0m | 6'8" x 3'4" |
| Balcony | 4.4m x 1.7m | 14'6" x 5'5" |



Floor



Apartment 208
 Apartments 308, 408, 508, 608, 708, 808, 908
 Apartment 1007
 Apartment 1105
 Apartment 1204

Key

- TU Tall Unit
- FF Fridge / Freezer
- DW Dishwasher
- WM Washing Machine
- W Wardrobe
- MVHR Mechanical Ventilation with Heat Recovery

2 Bedroom Apartment



Apartment Dimensions*

| | | |
|---------------------------|--------------------|----------------|
| Total Area | 85.1m ² | 916.2 sqft |
| Total Internal Area | 77.7m ² | 836.2 sqft |
| Total External Area | 7.4m ² | 80.0 sqft |
| Living / Kitchen / Dining | 5.2m x 5.0m | 17'0" x 16'3" |
| Bedroom 1 | 5.0m x 3.0m | 16'3" x 9'9" |
| Bedroom 2 | 4.4m x 3.9m | 14'4" x 12'10" |
| Bathroom | 2.2m x 2.0m | 7'1" x 6'7" |
| En-suite | 2.2m x 1.7m | 7'1" x 5'8" |
| Store | 1.7m x 1.2m | 5'9" x 3'11" |
| Balcony | 4.5m x 1.6m | 14'10" x 5'5" |



Floor



Apartments 305, 405, 505, 605, 705, 805, 905

Key

- FF Fridge / Freezer
- DW Dishwasher
- WM Washing Machine
- W Wardrobe
- MVHR Mechanical Ventilation with Heat Recovery

2 Bedroom Apartment



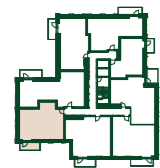
Apartment Dimensions*

| | | |
|---------------------------|--------------------|---------------|
| Total Area | 78.6m ² | 847.8 sqft |
| Total Internal Area | 71.6m ² | 770.2 sqft |
| Total External Area | 7.2m ² | 77.6 sqft |
| Living / Kitchen / Dining | 6.6m x 4.1m | 21'6" x 13'7" |
| Bedroom 1 | 4.7m x 2.8m | 15'3" x 9'1" |
| Bedroom 2 | 4.6m x 3.4m | 15'2" x 11'2" |
| Bathroom | 2.2m x 2.1m | 7'1" x 6'11" |
| En-suite | 2.2m x 1.5m | 7'1" x 4'11" |
| Store | 2.1m x 1.3m | 6'11" x 4'2" |
| Balcony | 4.4m x 1.7m | 14'4" x 5'5" |



Floor

03-09



Apartments
306, 406, 506, 606,
706, 806, 906

Key

- TU Tall Unit
- FF Fridge / Freezer
- DW Dishwasher
- WM Washing Machine
- W Wardrobe
- MVHR Mechanical Ventilation with Heat Recovery

2 Bedroom Apartment



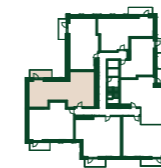
Apartment Dimensions*

| | | |
|---------------------------|--------------------|-----------------|
| Total Area | 96.6m ² | 1039.6 sqft |
| Total Internal Area | 88.6m ² | 953.5 sqft |
| Total External Area | 8.0m ² | 86.1 sqft |
| Living / Kitchen / Dining | 5.7m x 4.9m | 18'9" x 16'0" |
| Bedroom 1 | 5.4m x 3.3m | 17'10" x 10'10" |
| Bedroom 2 | 4.9m x 2.9m | 16'1" x 9'7" |
| Bathroom | 2.7m x 2.5m | 8'11" x 8'1" |
| En-suite | 2.5m x 1.4m | 8'1" x 4'7" |
| Store | 1.8m x 1.4m | 5'11" x 4'8" |
| Balcony | 4.9m x 1.7m | 15'11" x 5'5" |



Floor

03-09



Apartments
307, 407, 507

Key

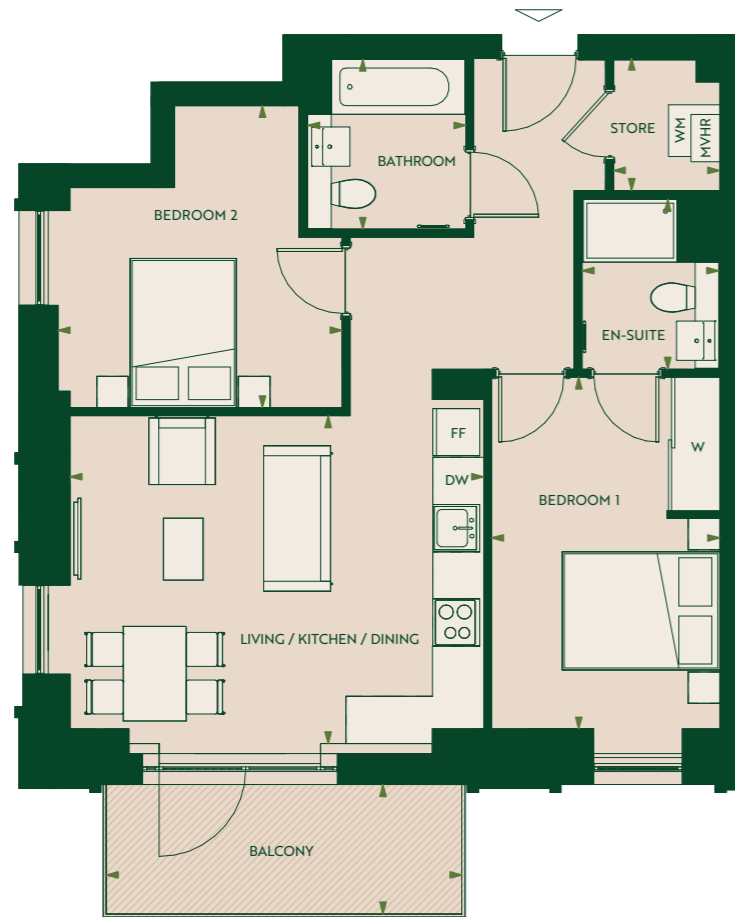
- TU Tall Unit
- FF Fridge / Freezer
- DW Dishwasher
- WM Washing Machine
- W Wardrobe
- MVHR Mechanical Ventilation with Heat Recovery

2 Bedroom Apartment



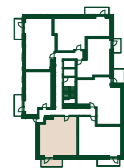
Apartment Dimensions*

| | | |
|---------------------------|--------------------|----------------|
| Total Area | 76.8m ² | 826.8 sqft |
| Total Internal Area | 69.4m ² | 746.8 sqft |
| Total External Area | 7.4m ² | 80.0 sqft |
| Living / Kitchen / Dining | 5.3m x 4.2m | 17'3" x 13'8" |
| Bedroom 1 | 4.5m x 2.9m | 14'8" x 9'6" |
| Bedroom 2 | 3.8m x 3.6m | 12'7" x 11'10" |
| Bathroom | 2.2m x 2.0m | 7'1" x 6'7" |
| En-suite | 2.2m x 1.7m | 7'1" x 5'8" |
| Store | 1.7m x 1.4m | 5'6" x 4'5" |
| Balcony | 4.5 x 1.6m | 14'10" x 5'5" |



Floor

10



Apartment 1005

Key

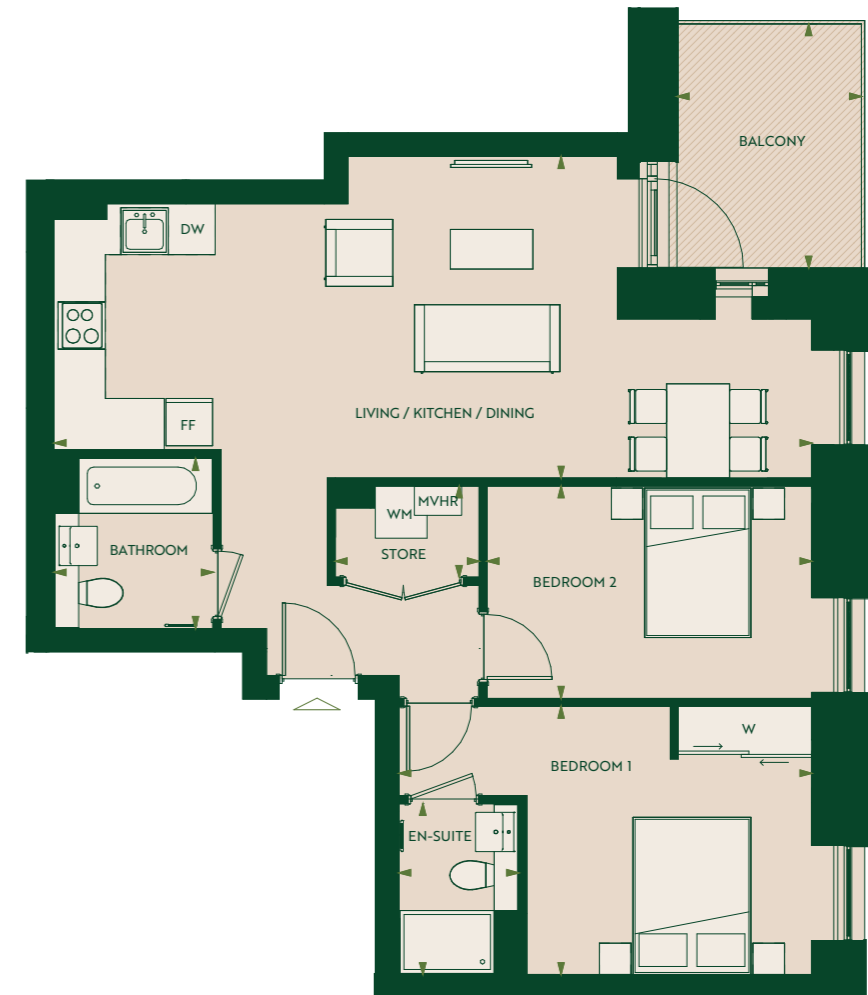
- FF Fridge / Freezer
- DW Dishwasher
- WM Washing Machine
- W Wardrobe
- MVHR Mechanical Ventilation with Heat Recovery

2 Bedroom Apartment



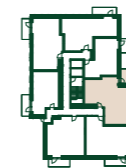
Apartment Dimensions*

| | | |
|---------------------------|--------------------|---------------|
| Total Area | 83.6m ² | 899.6 sqft |
| Total Internal Area | 76.3m ² | 821.2 sqft |
| Total External Area | 7.3m ² | 78.4 sqft |
| Living / Kitchen / Dining | 9.6m x 4.1m | 31'7" x 13'5" |
| Bedroom 1 | 5.3m x 3.4m | 17'3" x 11'2" |
| Bedroom 2 | 4.1m x 2.7m | 13'7" x 8'10" |
| En-suite | 2.2m x 1.5m | 7'2" x 5'0" |
| Bathroom | 2.2m x 2.0m | 7'1" x 6'7" |
| Store | 1.8m x 1.2m | 6'0" x 3'10" |
| Balcony | 3.1m x 2.3m | 10'2" x 7'8" |



Floor

10



Apartment 1005

Key

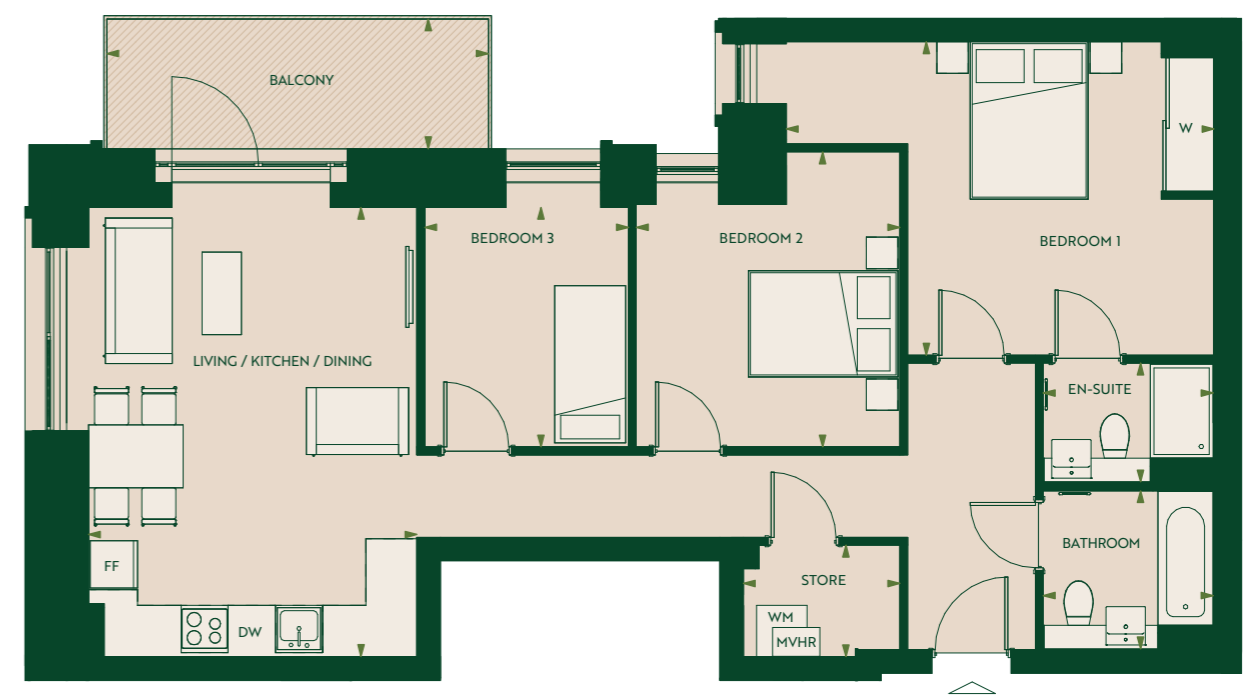
- FF Fridge / Freezer
- DW Dishwasher
- WM Washing Machine
- W Wardrobe
- MVHR Mechanical Ventilation with Heat Recovery

3 Bedroom Apartment



Apartment Dimensions*

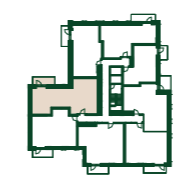
| | | |
|---------------------------|--------------------|----------------|
| Total Area | 96.7m ² | 1041 sqft |
| Total Internal Area | 88.7m ² | 954.9 sqft |
| Total External Area | 8m ² | 86.1 sqft |
| Living / Kitchen / Dining | 5.7m x 4.2m | 18'9" x 13'8" |
| Bedroom 1 | 5.4m x 4.0m | 17'10" x 13'1" |
| Bedroom 2 | 3.8m x 3.4m | 12'4" x 11'0" |
| Bedroom 3 | 3.0m x 2.6m | 9'10" x 8'6" |
| Bathroom | 2.2m x 2.0m | 7'1" x 6'7" |
| En-suite | 2.2m x 1.5m | 7'1" x 4'11" |
| Store | 2.0m x 1.4m | 6'6" x 4'8" |
| Balcony | 4.9m x 1.7m | 15'11" x 5'5" |



3 Bedroom Apartments

Floor

06-09



Apartments
607, 707, 807, 907

Key

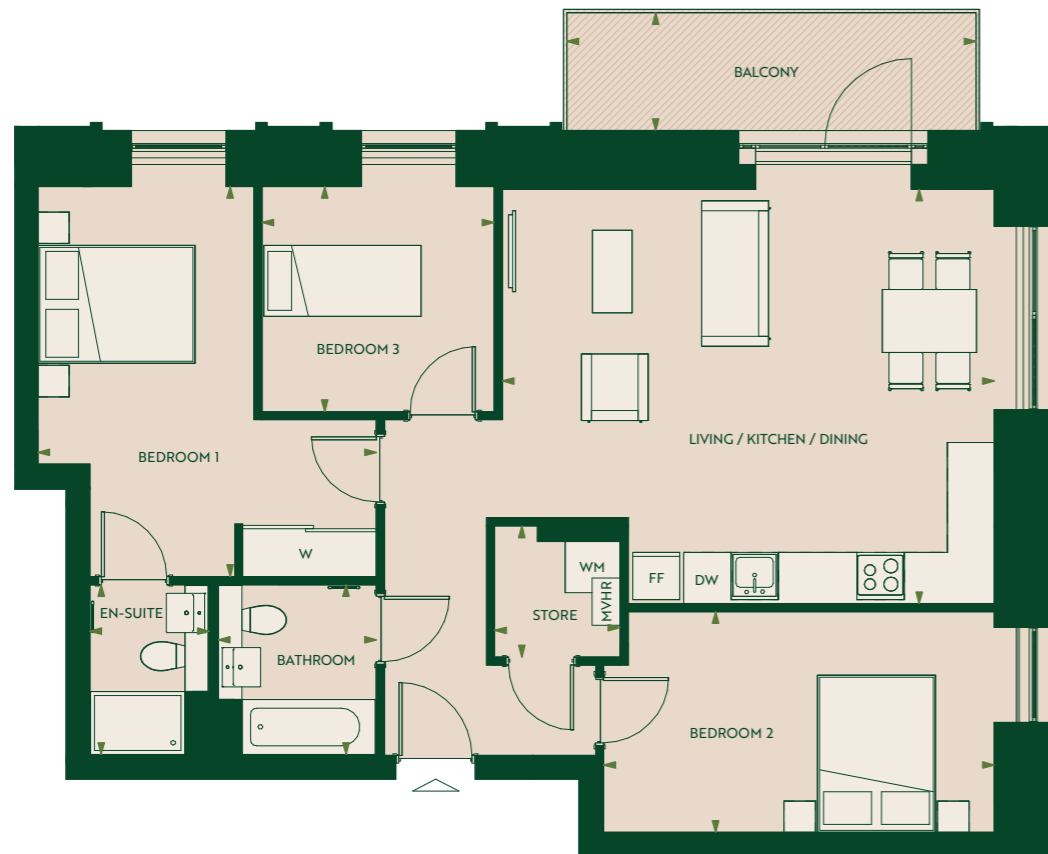
- FF Fridge / Freezer
- DW Dishwasher
- WM Washing Machine
- W Wardrobe
- MVHR Mechanical Ventilation with Heat Recovery

3 Bedroom Apartment



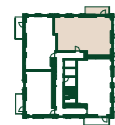
Apartment Dimensions*

| | | |
|---------------------------|---------------------|---------------|
| Total Area | 100.3m ² | 1079.4 sqft |
| Total Internal Area | 92.5m ² | 995.4 sqft |
| Total External Area | 7.8m ² | 84.0 sqft |
| Living / Kitchen / Dining | 6.3m x 5.3m | 20'6" x 17'3" |
| Bedroom 1 | 5.0m x 4.3m | 16'3" x 14'2" |
| Bedroom 2 | 5.0m x 2.8m | 16'4" x 9'3" |
| Bedroom 3 | 3.0m x 2.9m | 9'8" x 9'5" |
| Bathroom | 2.2m x 2.0m | 7'1" x 6'7" |
| En-suite | 2.2m x 1.5m | 7'1" x 4'11" |
| Store | 1.7m x 1.6m | 5'6" x 5'3" |
| Balcony | 5.2m x 1.5m | 17'1" x 4'11" |



Floor

12



Apartment 1201

Key

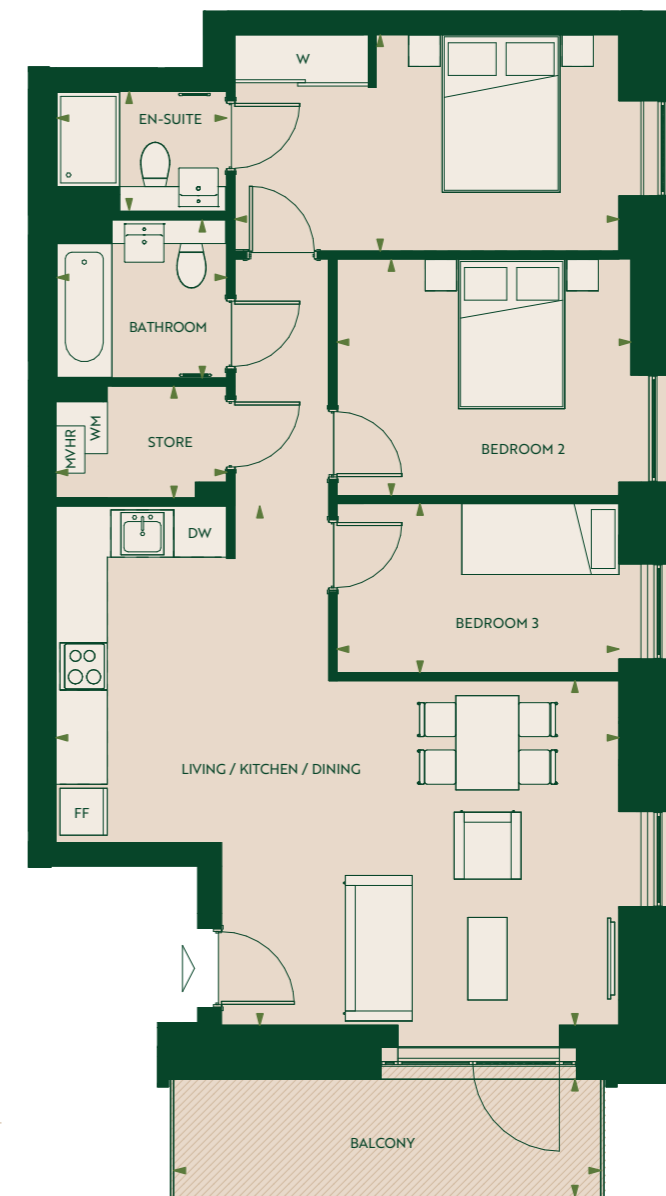
- FF Fridge / Freezer
- DW Dishwasher
- WM Washing Machine
- W Wardrobe
- MVHR Mechanical Ventilation with Heat Recovery

3 Bedroom Apartment



Apartment Dimensions*

| | | |
|---------------------------|--------------------|----------------|
| Total Area | 94.0m ² | 1012.2 sqft |
| Total Internal Area | 85.9m ² | 924.5 sqft |
| Total External Area | 8.1m ² | 87.7 sqft |
| Living / Kitchen / Dining | 7.2m x 6.6m | 23'6" x 21'8" |
| Bedroom 1 | 4.9m x 2.8m | 16'0" x 9'0" |
| Bedroom 2 | 3.7m x 3.0m | 12'3" x 9'10" |
| Bedroom 3 | 3.6m x 2.2m | 11'9" x 7'1" |
| Bathroom | 2.2m x 2.0m | 7'1" x 6'7" |
| En-suite | 2.2m x 1.5m | 7'1" x 4'11" |
| Store | 2.2m x 1.4m | 7'1" x 4'8" |
| Balcony | 5.4m x 1.5m | 17'10" x 4'11" |



Floor

12



Apartment 1202

Key

- FF Fridge / Freezer
- DW Dishwasher
- WM Washing Machine
- W Wardrobe
- MVHR Mechanical Ventilation with Heat Recovery



More than just a place to live.

Peabody creates great places where people want to live, adding value by upholding high design standards, building sustainable, high-quality new homes that stand the test of time and making a positive difference through ongoing commitment to our communities.

160

Building history

Formed 160 years ago by the American financier and philanthropist George Peabody, Peabody is one of the UK's oldest and largest housing associations. Together with Catalyst Housing who joined the Group in 2022, we are responsible for more than 104,000 homes across London and the Home Counties.



Social impact

In line with our social purpose, Peabody re-invests its surplus to provide more homes and services. We deliver services to 220,000 residents, supporting customers and the wider communities in which we work. We focus on those who need our help the most, working with people and communities to build resilience and promote wellbeing. We invest around £11m each year through our Community Foundation, to support people to be healthier, wealthier and happier.



Customer focus

Over 90% of customers said they would recommend Peabody. Our customers' feedback helps shape the design of our homes and community services based on the needs of each neighbourhood. We value our customers and listen to what they have to tell us. Peabody are proud to have achieved 'Gold' in the independent customer satisfaction awards three times in a row and strive for excellence in all that we do.



Quality Design & Sustainability

Peabody's reputation is one of the most respected in the housing industry, renowned for high quality, innovative design. We work with industry experts and continually monitor quality throughout the design, procurement and development process. We aim to make a positive impact on climate change for our residents, communities and the environment, with an ambition to achieve net zero carbon in our new and existing homes by 2050.



Strong growth

With a growing pipeline, Peabody continues to invest in building quality new homes with high design standards. We create homes in great locations which are safe, easy to maintain and long-lasting. Peabody delivers long-term returns on investment. With an asset base of £8.3bn, Peabody is well placed to build thousands more top quality, well-maintained homes each year.



Award winning

In recent years, Peabody has been recognised and awarded more than 60 prestigious awards, including the Sunday Times 'Homebuilder of the Year' and the Grand Prix award at the Evening Standard New Homes Awards. We also work with award winning partners who share our values, high design standards and focus on great customer experience.

Our mission is to help people flourish.

Find your place:

peabodysales.co.uk/more-than-just-a-place-to-live/



Track record of urban regeneration

Here are just a few examples of where we have recently delivered award winning urban regeneration in London.

Arden

Lewisham, SE10 (pictured)

Located in Lewisham, close to Deptford and Greenwich, this development sits within its own landscaped surroundings and is well placed to take advantage of everything South East London has to offer.

Fish Island Village

Hackney Wick, E3

A vibrant canalside community of 580 new homes, just moments from the Olympic Park. This thriving, cultural creative hub is a truly inspiring place with unique spaces to live and work.

Merchants Walk

Bow, E3

A vibrant canalside Ideally positioned between Canary Wharf and Stratford, this stunning collection of 413 well-designed new homes delivers uncompromising quality at an affordable price.

WILLOW WALK

LONDON SW18

For all enquiries, call **020 7021 4842**
or visit willowwalk-sw18.com



Every care has been taken in preparation of this brochure. The details contained herein are for guidance only and should not be relied upon as exactly describing any of the particular material illustrated or written by any order under the Consumer Protection from Unfair Trading Regulations 2008. This information does not constitute a contract, part of a contract or warranty. The developer operates a programme of continuous product development. Features, internal and external, may vary from time to time and may differ from those shown in the brochure. Willow Walk is a marketing name and may not form part of the postal address for these properties.

*Apartment layouts provide approximate measurements only. Dimensions, which are taken from the indicated points of measurement, are for guidance only and are not intended to be used for carpet sizes, appliance space or items of furniture measurements are rounded down and we work towards 5% tolerance. Apartment areas are provided as gross internal areas and may vary. Bathroom and kitchen layouts are indicative only and are subject to change. Wardrobe sizes and position may vary. Ceiling height may vary within select apartments. All balcony dimensions and areas are approximate and may vary. The information contained within this document does not constitute part of any offer, contract or warranty. Whilst the plans have been prepared with all due care for the convenience of the intending purchaser, the information contained herein is a preliminary guide only. Please speak to the sales team for more information. Information correct as of June 2022.

