

HADLEIGH
RESIDENTIAL



BELSIZE GROVE, NW3

£3,750 PCM

ABSOLUTELY BEAUTIFUL APARTMENT | FIRST FLOOR OF A WHITE STUCCO BUILDING | 840 SQ. FT. | TWO BEDROOMS
STYLISH AND BESPOKE IN DESIGN | BEAUTIFUL BATHROOM | OPEN PLAN KITCHEN/DINING AREA

For clarification, we wish to inform prospective tenants that we have prepared these particulars as a general guide. We have not carried out a detailed survey, nor tested the services, appliances and specific fittings. Room sizes should not be relied upon for carpets and furnishings. If there are any important matters which are likely to affect your decision, please contact us before viewing the property.

HADLEIGH RESIDENTIAL
19 BELSIZE GROVE, LONDON, NW3 4TX
020 7722 9799
PROPERTY@HADLEIGH.CO.UK | WWW.HADLEIGH.CO.UK

DESCRIPTION

An absolutely beautiful two bedroom apartment over the first floor of this impressive white stucco building in the very heart of Belsize Park. This stunning property offers stylish interiors throughout and provides approximately 840 Sq. Ft. comprising of a bright 18' reception room with French doors leading to a terrace with amazing views, fully integrated contemporary kitchen with space to dine, master bedroom with wall to wall fitted wardrobes, further double bedroom and bathroom with roll top bath and separate walk in shower.

The property is available from the 1st of September on a fully furnished basis.

ENERGY EFFICIENCY RATING D.

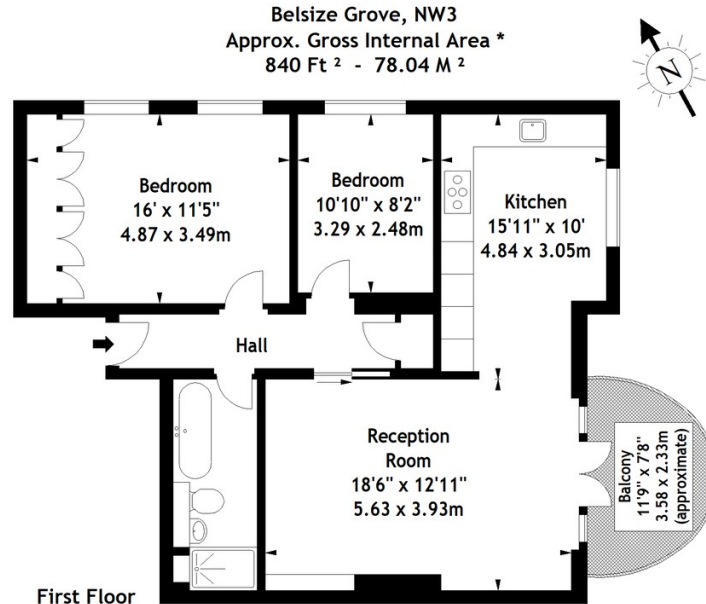


Illustration For Identification Purposes Only. Not To Scale

* As Defined by RICS - Code of Measuring Practice

© International Floorplans.

Tel 0094 113 345958

www.ifpl.co.uk