

2 Bed Flat for Sale

Price £375,000

Alderman House, Spring Grove Road, Isleworth TW7 4BA



Property Features

- Ground Floor Flat
- Private Allocated Parking
- Semi - Open Plan Kitchen
- 2 Double Bedrooms
- 2 Bathrooms
- Double Glazed
- Small Block of 5 Flats Only
- Close to Hounslow East and Isleworth Station
- Close to Great West Road
- 107 years lease remaining

Property Description

We are proud to present this spacious ground floor flat in a small purpose built block of 5 flats. The flat further benefits from secure entry system, double glazing, Semi-Open Plan kitchen, two good size double bedrooms, 2 Bathrooms (En-suite to master bedroom), good size lounge and allocated parking.

- Service Charge £2500.00 Per Annum Approx.
- Ground Rent £275.00 Per Annum
- Lease Remaining 107 Years
- Council Tax Band E
- EPC Rating D

This property's current energy rating is D. It has the potential to be B.

[See how to improve this property's energy performance.](#)

| Score | Energy rating | Current | Potential |
|-------|---------------|---------|-----------|
| 92+ | A | | |
| 81-91 | B | | 82 B |
| 69-80 | C | | |
| 55-68 | D | 65 D | |
| 39-54 | E | | |
| 21-38 | F | | |
| 1-20 | G | | |

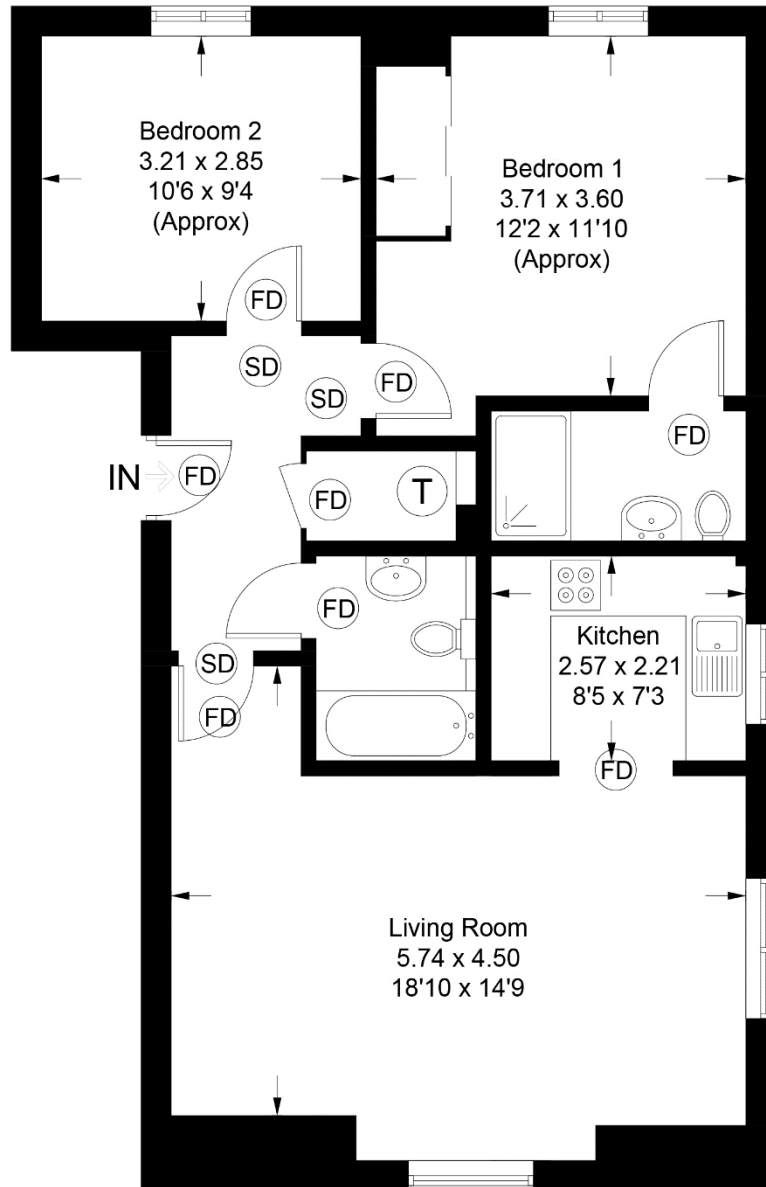
The graph shows this property's current and potential energy efficiency.

Alderman House

Approximate Gross Internal Area = 67.2 sq m / 723 sq ft



- (FD) FIRE DOOR
- (SD) SMOKE DETECTOR



Ground Floor

Illustration for identification purposes only, measurements are approximate, not to scale. (ID932332)

* All measurements are approximate

DISCLAIMER PROPERTY DETAILS

These particulars, whilst believed to be accurate are set out as a general outline only for guidance and do not constitute any part of an offer or contract. Intending purchasers should not rely on them as statements or representation of fact, but must satisfy themselves by inspection or otherwise as to their accuracy. We have not carried out a detailed survey nor tested the services, appliances and specific fittings. Room sizes should not be relied upon for carpets and furnishings. The measurements given are approximate. No person in this firm has the authority to make or give any representation or warranty in respect of the property.