

10 Shieling Park, Ayr, KA7 2UR



Andrew Bryden
Property Consultant

kw
KELLERWILLIAMS.



Shieling Park is situated in such a lovely spot, surrounded by lawns and mature gardens, hidden away from the main road but easily accessible nonetheless.

Internally the accommodation is situated on the first floor and you'll find the rooms all spacious comprising a large rear facing lounge, formal dining room with access to the private balcony, modern fully fitted kitchen with breakfasting bar and two double bedrooms. Furthermore, you'll find a large family bathroom, a separate shower room and ample storage space throughout, all accessible from the main hallway.



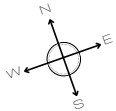
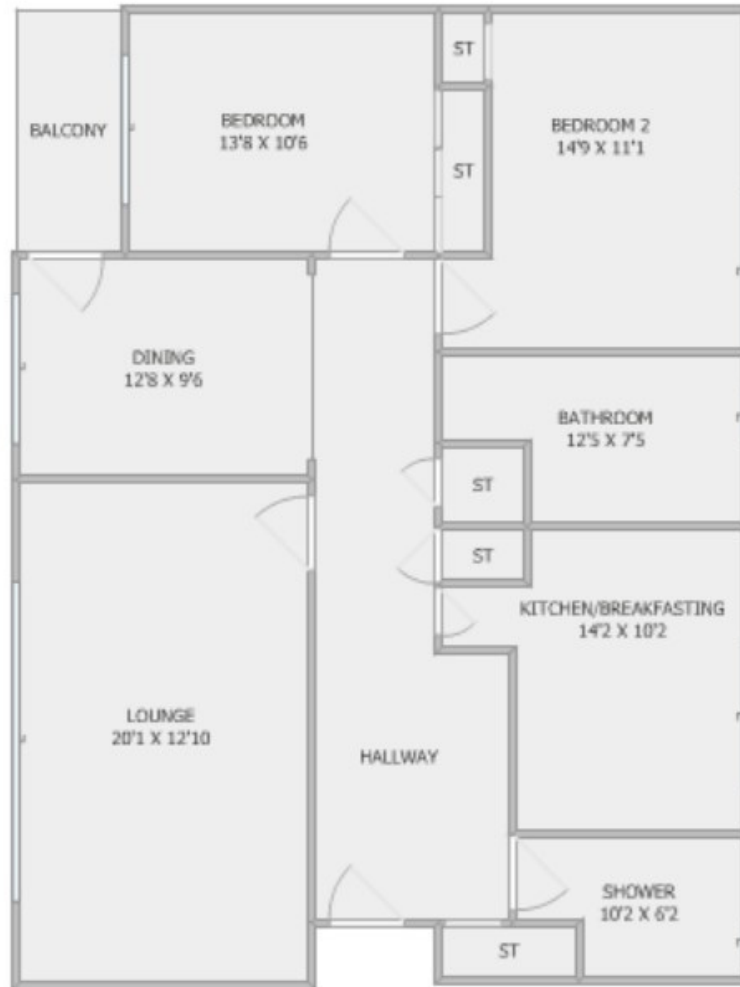
Outside there is a garage and a designated parking area for guests and residents alike.

In summary, this family home has a lot to offer anyone looking in the area. Gorgeous countryside, rural living, friendly community and yet only a few minutes' drive from larger towns and travel links.



Absolutely gorgeous spacious first floor apartment in one of the most popular areas of Ayr, only a few minutes' walk from the town centre, Ayr's famous beachside and all the amenities the town offers.

Viewings strictly by appointment



- Beautifully presented and in walk-in condition
- Two double bedrooms and private balcony
- Large lounge with aspect facing rear garden
- Formal dining area
- Spacious, fully fitted kitchen with breakfasting bar
- Large bathroom and a separate shower room
- Garage and residential parking area
- Superb location within the town
- Walking distance to the town centre and from Ayr beach
- Surrounded by well-maintained mature gardens
- EPC - C

Ayr

The coastal town of Ayr boasts stunning views over the Firth of Clyde towards the Isle of Arran and beyond. Ayr is home to several modern Primary and Secondary schools as well as a college and university while the Citadel is a large recreation facility near the beach front with pools, gyms and sports halls.





Andrew Bryden

07746 864 837



@abrydenkw

andrew.bryden@kwuk.com



DISCLAIMER

These particulars are intended to give a fair description of the property but their accuracy cannot be guaranteed, and they do not constitute or form part of an offer of contract. Intending purchasers must rely on their own inspection of the property. None of the above appliances/services have been tested by ourselves. We recommend purchasers arrange for a qualified person to check all appliances/services before legal commitment. Whilst every attempt has been made to ensure the accuracy of the floorplan contained here, measurements of doors, windows, rooms and any other items are approximate and no responsibility is taken for any error, omission, or misstatement. This plan is for illustrative purposes only and should be used as such by any prospective purchaser.