

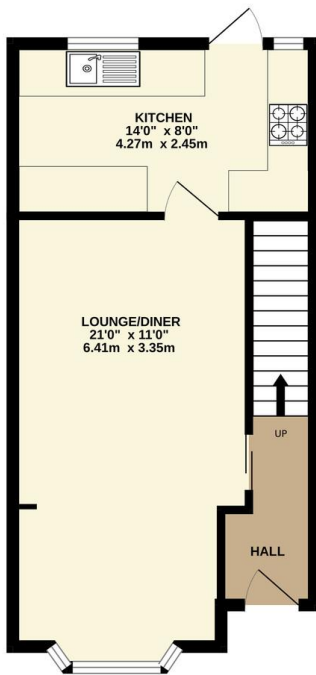
FOR SALE

2 Bed End Terraced House in Rectory Road, Markfield LE67 9WN
£185,000

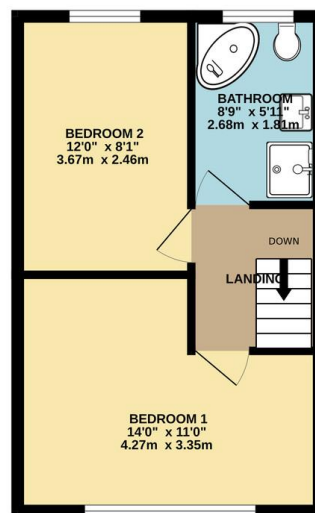
A much improved extended and well presented modern two bedroom end of town house pleasantly situated on cul de sac within the highly popular location of Markfield. The accommodation comprises entrance hall, extended lounge / diner, fitted kitchen, landing to two double bedrooms, four piece bathroom, landscaped front and rear gardens, ample allocated car standing space to the side, garage in block. Internal inspection comes highly recommended.



GROUND FLOOR
390 sq.ft. (36.3 sq.m.) approx.



1ST FLOOR
323 sq.ft. (30.0 sq.m.) approx.



TOTAL FLOOR AREA: 713 sq.ft. (66.3 sq.m.) approx.

Whilst every attempt has been made to ensure the accuracy of the floorplan contained here, measurements of doors, windows, rooms and any other items are approximate and no responsibility is taken for any error, omission or mis-statement. This plan is for illustrative purposes only and should be used as such by any prospective purchaser. The services, systems and appliances shown have not been tested and no guarantee as to their operability or efficiency can be given.
Made with Metropix ©2023

Energy Efficiency Rating		Current	Potential
Very energy efficient - lower running costs			
(92-100)	A		
(81-91)	B		85
(69-80)	C	71	
(55-68)	D		
(39-54)	E		
(21-38)	F		
(1-20)	G		
Not energy efficient - higher running costs			
England, Scotland & Wales		EU Directive 2002/91/EC	

- Extended End Of Town House
- Two Bedrooms
- Well Presented
- Improved Throughout
- Four Piece Bathroom
- Highly Popular Location
- Off Road Parking
- Garage

Agents Note: Whilst every care has been taken to prepare these sales particulars, they are for guidance purposes only. All measurements are approximate and for general guidance purposes only and whilst every care has been taken to ensure their accuracy, they should not be relied upon and potential buyers are advised to recheck the measurements.

