



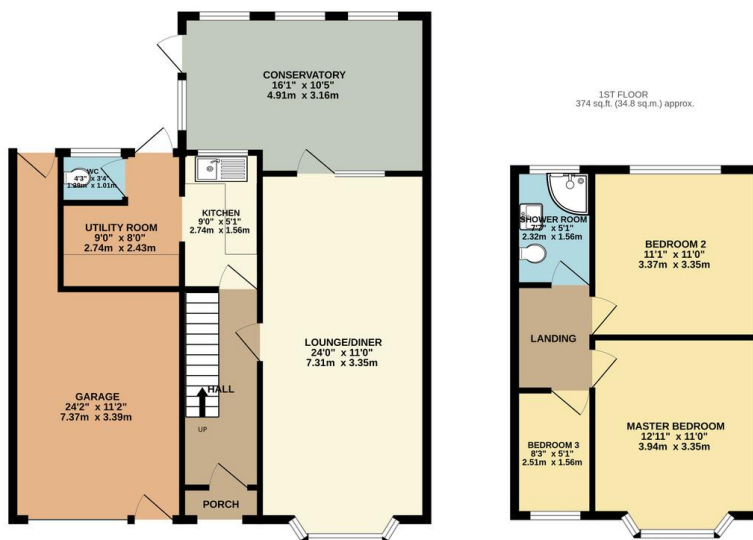
FOR SALE

3 Bed Semi-Detached House in Radford Drive, Leicester LE3 3DR
£250,000

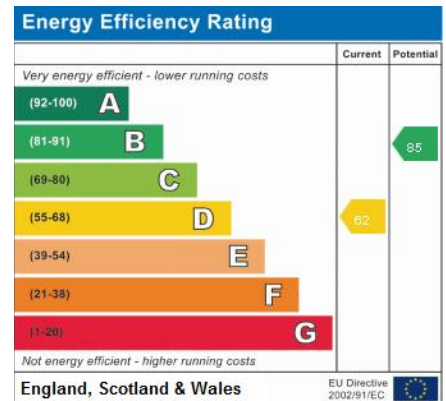
*** No Chain *** Neatly presented three bedroom semi detached family home is pleasantly situated on a larger than average plot within the sought after location of Braunstone Town. The property is closely located to a selection of local amenities, a short walk to the park ride, good access to Fosse Shopping Park and the city centre and excellent access to the motorway networks. The accommodation comprises main entrance hall, lounge diner, fitted kitchen and utility room, conservatory, landing to three bedrooms and shower room, front and rear gardens set on larger than average



GROUND FLOOR
810 sq. ft. (75.3 sq.m.) approx.



TOTAL FLOOR AREA: 1184 sq. ft. (110.0 sq.m.) approx.
Whilst every attempt has been made to ensure the accuracy of the floorplan contained here, measurements of doors, windows, rooms and any other items are approximate and no responsibility is taken for any error, omission or mis-statement. This plan is for illustrative purposes only and should be used as such by any prospective purchaser. The services, systems and appliances shown have not been tested and no guarantee as to their operability or efficiency can be given.
Made with Metropac ©2023



- No Chain
- Three Bedrooms
- Semi Detached
- Large Plot
- Garage
- Utility Room
- Shower Room
- Conservatory

Agents Note: Whilst every care has been taken to prepare these sales particulars, they are for guidance purposes only. All measurements are approximate and for general guidance purposes only and whilst every care has been taken to ensure their accuracy, they should not be relied upon and potential buyers are advised to recheck the measurements.

