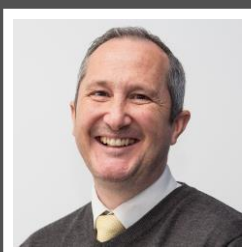


Love Homes



Keats Road, Flitwick, Bedfordshire, MK45 1QD

This three bedroom link-detached house is located in peaceful cul de sac just yards from open countryside and the leisure centre as well as within easy reach to local schools and the train station. The property enjoys light and airy open plan living accommodation ideal for a growing family or those wishing to downsize. The accommodation briefly comprises; an entrance hall, a 24'3" living/dining room with patio door accessing the rear garden, a kitchen overlooking the rear garden, three first floor bedrooms as well as a bathroom and separate cloakroom. Further benefits include double glazed windows throughout and gas to radiator central heating.



This property is presented by Duncan Stead - a Love Homes property expert with over 25 years' experience.

Find out more about this property by scanning the QR code.



0.6m

Tenure: Freehold



3



1

Council Tax: D



1





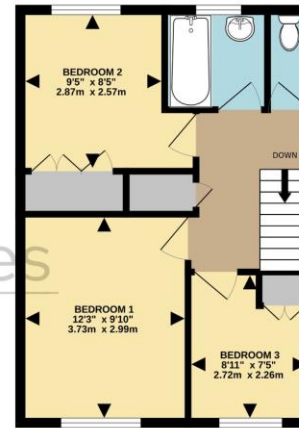
"Having lived on Keats Road for 30 years, I've been blessed to have many cherished memories and made some great friends around here over the years. This property has proven to be immensely practical, offering delightful strolls through the surrounding countryside and the enchanting Flitwick woods with each season offering its own unique beauty. The proximity to the station, shops, schools, and the leisure centre has been such a convenience, but now, as life takes a fresh turn, it is time for another to create fresh, delightful memories in this wonderful setting".



GROUND FLOOR
590 sq.ft. (54.8 sq.m.) approx.

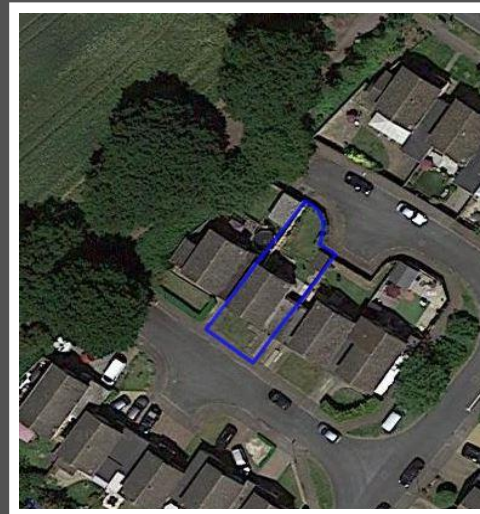


1ST FLOOR
412 sq.ft. (38.3 sq.m.) approx.



TOTAL FLOOR AREA: 1002 sq.ft. (93.1 sq.m.) approx.
Drawn by Love Homes for illustrative purposes only. Measurements and areas shown are approximate.
Made with Metropix ©2023

Score	Energy rating	Current	Potential
92+	A		
81-91	B		86 B
69-80	C	72 C	
55-68	D		
39-54	E		
21-38	F		
1-20	G		



These particulars are set out as a general outline in accordance with the Property Misdescriptions Act (1991) only for the guidance of intending purchasers or lessees, and do not constitute any part of an offer or contract. Details are given without any responsibility, and any intending purchasers, lessees or third parties should not rely on them as statements or representations of fact but must satisfy themselves by inspection or otherwise as to the correctness of each of them. We have not carried out a structural survey and the services, appliances and specific fittings have not been tested. All photographs, measurements, floor plans and distances referred to are given as a guide only and should not be relied upon for the purchase of carpets or any other fixtures or fittings. Gardens, roof terraces, balconies and communal gardens as well as tenure and lease details cannot have their accuracy guaranteed for intending purchasers. Lease details, service ground rent (where applicable) are given as a guide only and should be checked and confirmed by your solicitor prior to exchange of contracts. No person in the employment of Love Homes has any authority to make any representation or warranty whatever in relation to this property. Purchase prices, rents or other prices quoted are correct at the date of publication and, unless otherwise stated, are exclusive of VAT. We retain the copyright in all advertising material used to market this Property. All information is as advised by the seller and subject to change. Council tax bands can be subject to change by the local council.

5 The Russell Centre, Coniston Road, Flitwick, MK45 1QY
Tel: 01525 713111

Email: flitwick@lovehomes.uk

www.lovehomes.uk



Love Homes