



Adamsfield Gardens, Bournemouth, Dorset

2 1 1

Asking Price £305,000





Corbin & Co are delighted to offer for sale this charming two bedroom detached bungalow situated in the very popular cul-de-sac of Adamsfield Gardens, Ensbury Park, Bournemouth.

Accommodation comprises entrance hall, lounge, kitchen, two bedrooms, bathroom and separate WC. The property is located a short distance to local shops and bus routes into Bournemouth & Poole town centres.

The property consists of two good size bedrooms with fitted wardrobes in the main bedroom, a compact kitchen with plenty of worktop space, and space for appliances. A well presented, light and airy lounge with door out to the sunny SOUTH FACING rear garden and a shower room with separate cloakroom with hand basin.

Outside, a private south facing low maintenance rear garden laid to patio and lawn. There is off road parking and a detached garage with power and lighting.

This really is a superb bungalow and perfect for individuals, couples or a young family. Being priced very fairly, we anticipate a lot of interest. Don't miss this opportunity. To arrange your viewing please call 01202 519761

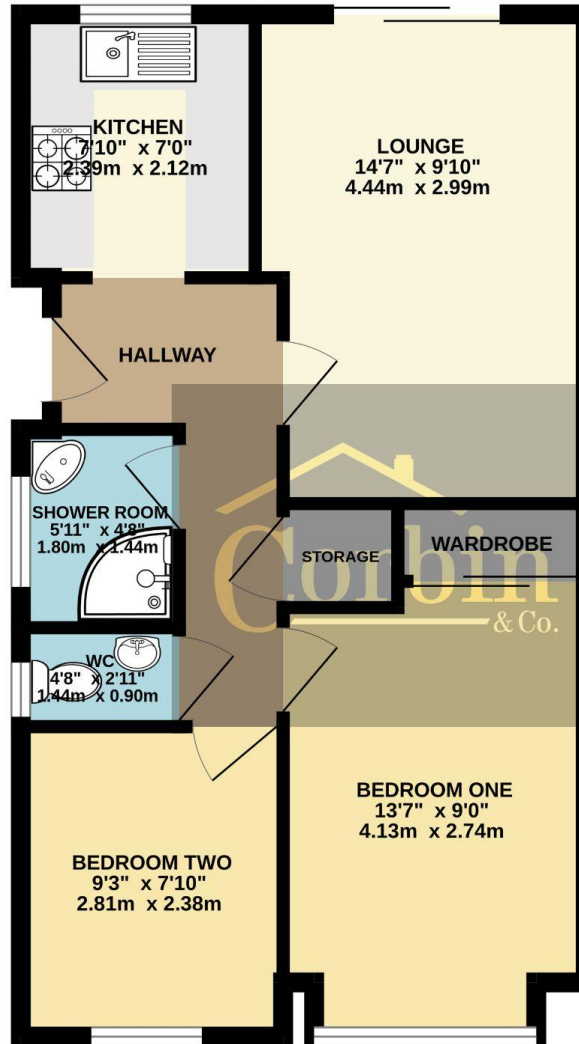








GROUND FLOOR  
503 sq.ft. (46.7 sq.m.) approx.



arla | propertymark

PROTECTED

naea | propertymark

PROTECTED