



**LAWRENCE RAND**

**64 Wood End Lane, Northolt**

Guide Price **£500,000**





## 64 Wood End Lane

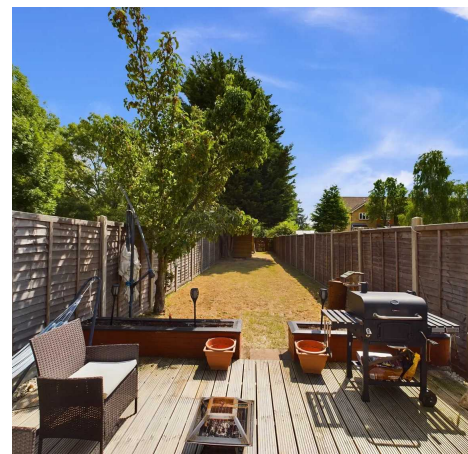
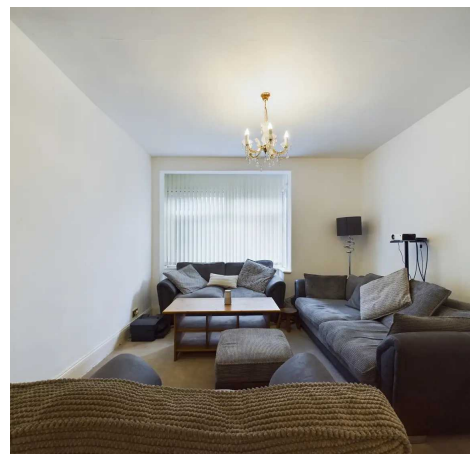
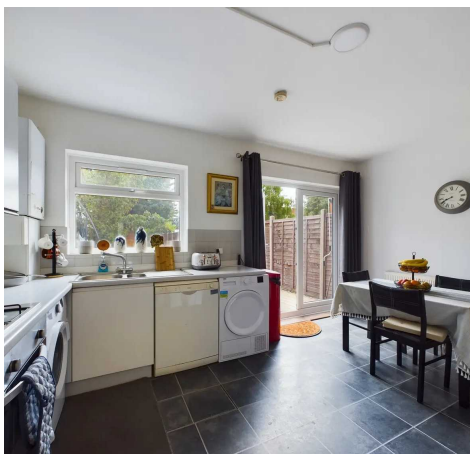
Northolt, Northolt

Three bedroom terraced family home located in a sought after road.

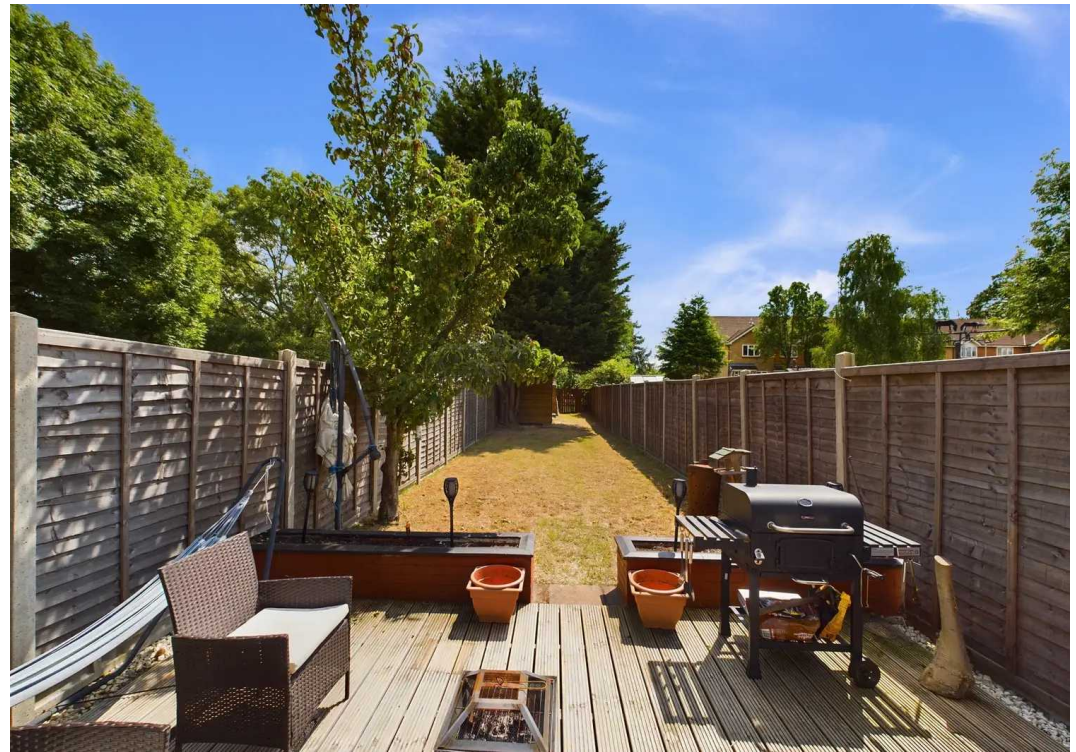
Council Tax band: D

Tenure: Freehold

- Three bedroom terraced house
- Extended kitchen/diner
- No upper chain
- Utility area
- Through lounge
- Large rear garden











Ground Floor



Floor 1

**Approximate total area<sup>(1)</sup>**

910.03 ft<sup>2</sup>

84.54 m<sup>2</sup>

**Reduced headroom**

2.77 ft<sup>2</sup>

0.26 m<sup>2</sup>

(1) Excluding balconies and terraces

☒ Reduced headroom  
(below 1.5m/4.92ft)

While every attempt has been made to ensure accuracy, all measurements are approximate, not to scale. This floor plan is for illustrative purposes only.



## Lawrence Rand

Lawrence Rand, 106 Victoria Road - HA4 0AL

01895 632211

[Info@lawrence-rand.co.uk](mailto:Info@lawrence-rand.co.uk)

[www.lawrence-rand.co.uk/](http://www.lawrence-rand.co.uk/)



**LAWRENCE RAND**