



INTERLET

HARRINGTON COURT, HARRINGTON ROAD, SOUTH KENSINGTON,
LONDON SW7

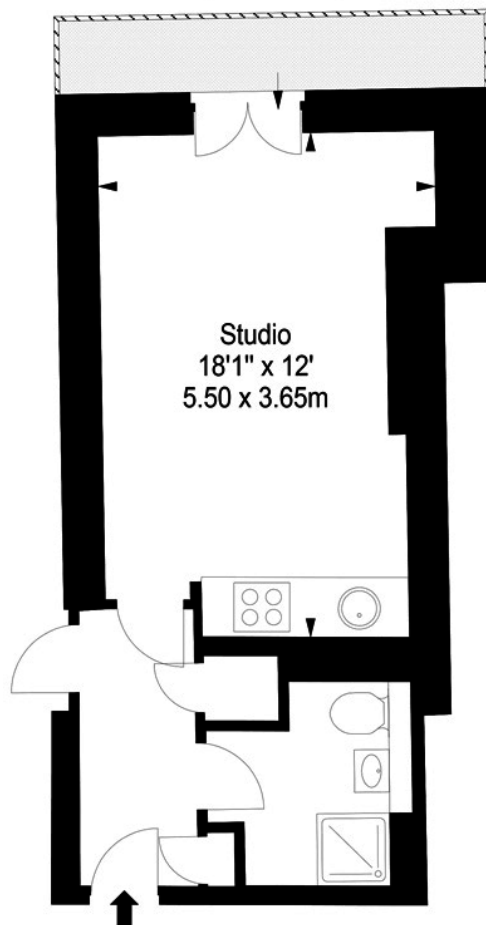
£565 PW



This fantastic one-bedroom open-plan apartment is located at Harrington Court in South Kensington SW7. The open-plan home will provide you with plenty of space for comfortable living. The reception area hosts modern sofa, furniture and a flat screen TV for your enjoyment. In the dining/ bedroom area, you'll find a luxurious queen size bed, neatly tucked away to guarantee a peaceful night's sleep, every night. Whether you're visiting London for business or pleasure, we'll provide you with everything you need to make your stay as comfortable as possible. Located in a bustling area of South Kensington, the property is close to shopping, restaurants and independent cafés. You'll be just a short walk away from some of London's landmarks and excellent public transport links.[...]

l e t t i n g s @ i n t e r l e t . c o m
+ 4 4 (0) 2 0 7 7 9 5 6 5 2 5
w w w . i n t e r l e t . c o m

Harrington Court 302 Sq Ft / 28 Sq M



Please note that diagrams are not to scale
and all measurements are approximate.

Important Notice

Interlet and their clients give notice that: 1) They are not authorised to make or give any representations or warranties in relation to the property, either here or else where. The particulars do not form part of any offer part of any offer or contract and must not be relied upon as statements or representations of fact. 2. Any areas, measurements, distances are approximate. The text, images and plans are for guidance only and are not necessarily comprehensive. It should not be assumed that the property has all necessary planning, building regulation or other contents and Interlet have not tested any services, equipment or facilities. Prospective tenants must satisfy themselves by inspection or otherwise. Please note that the local area may be affected by aircraft noise, you should make your own enquiries regarding any noise in the area before you make an offer.



iNTERLET
SALES & LETTINGS

Welcome home.