

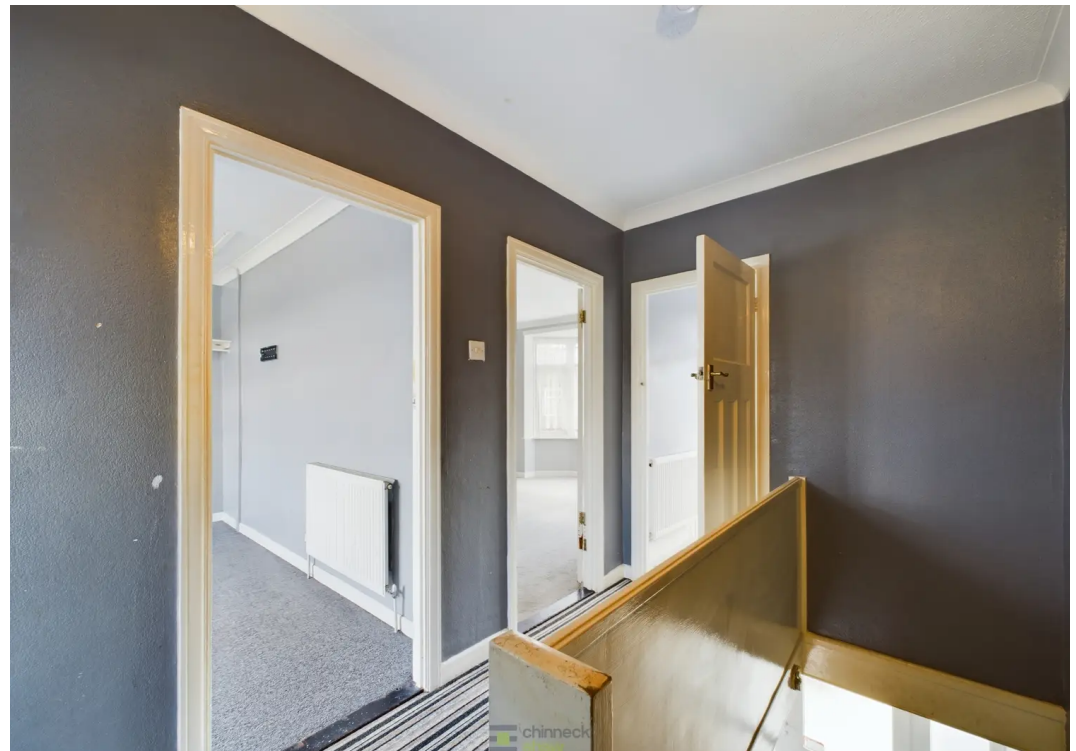
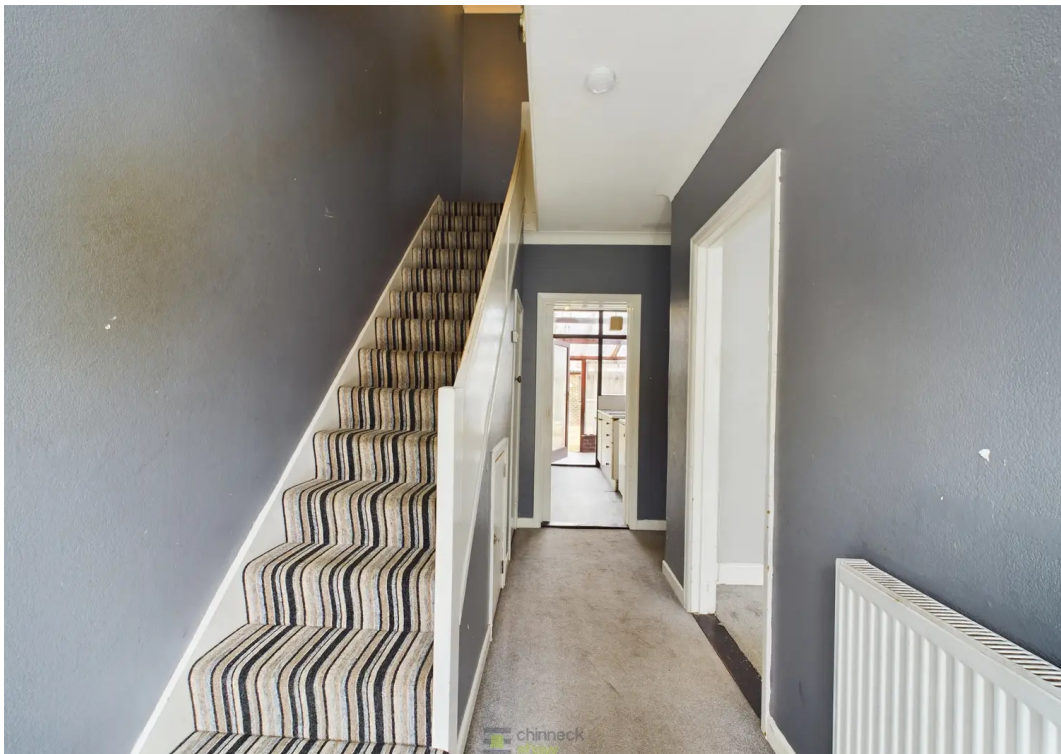


57 Jenkins Grove, Baffins

Portsmouth

Offers in Region of **£295,000**





57 Jenkins Grove

Baffins, Portsmouth

Looking for a characterful property with bags of potential? Look no further than this much loved 1930's mid-terraced home, located in the heart of Baffins. With good size rooms, three bedrooms and a double garage, this property is perfect for those of you wanting to make this house your home.

The property boasts a forecourt at the front, offering a welcoming entrance to the home. Inside, you'll find a bright and airy living room, complete with a large bay window. The dining room is equally spacious and perfect for entertaining, while the kitchen offers plenty of potential for modernisation. To the rear is also a large conservatory which has access to the garden.

Upstairs, there are three generously sized bedrooms. The bathroom is located at the rear of the property and is in need of modernising, but offers plenty of potential for those looking to put their own stamp on the property.

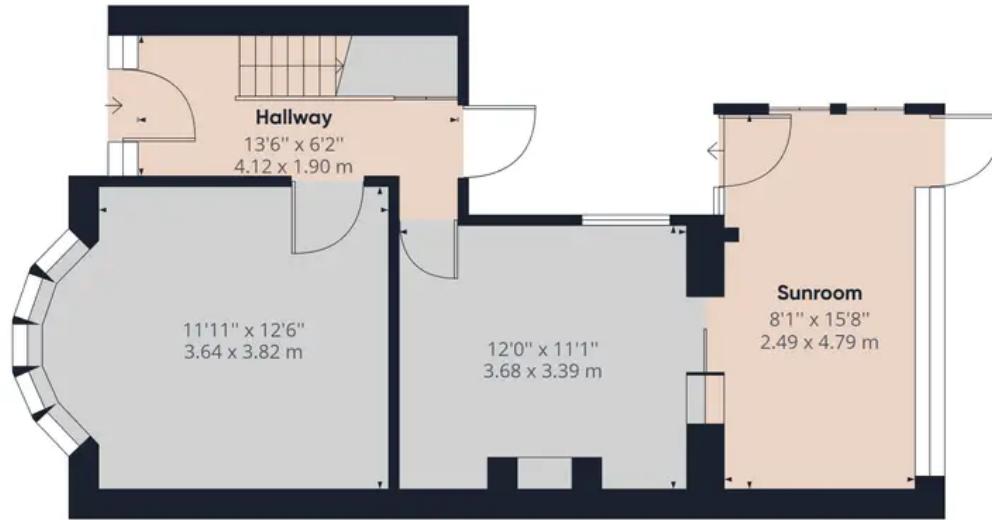
Outside, the garden is perfect for those who love to spend time outdoors, while the double garage provides plenty of storage space.

This property offers plenty of potential for those looking to create their dream home. With no forward chain and in a fantastic location, this property is not to be missed.

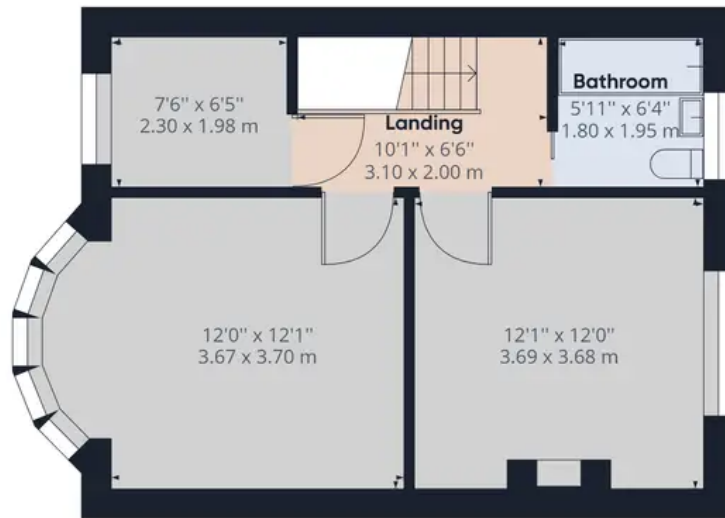
Council Tax band: C

Tenure: Freehold





Ground Floor Building 1



Floor 1 Building 1



Ground Floor Building 2

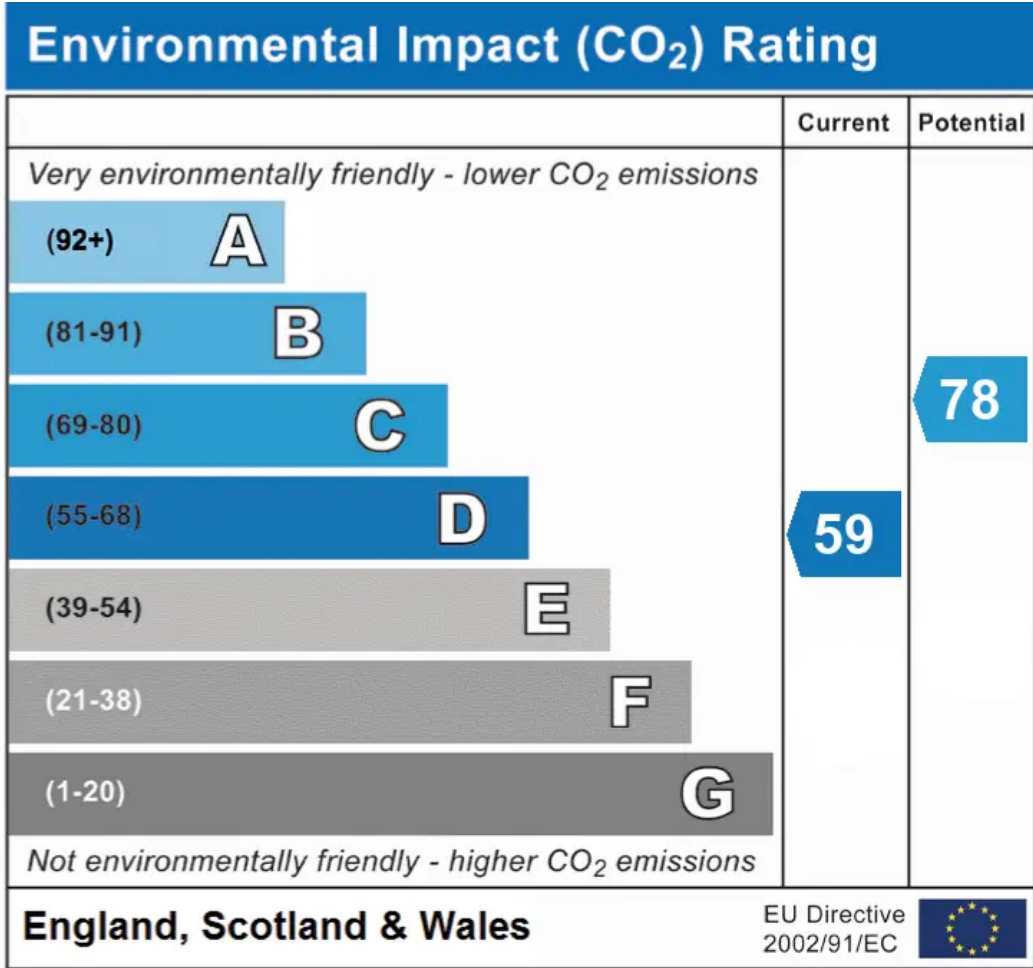
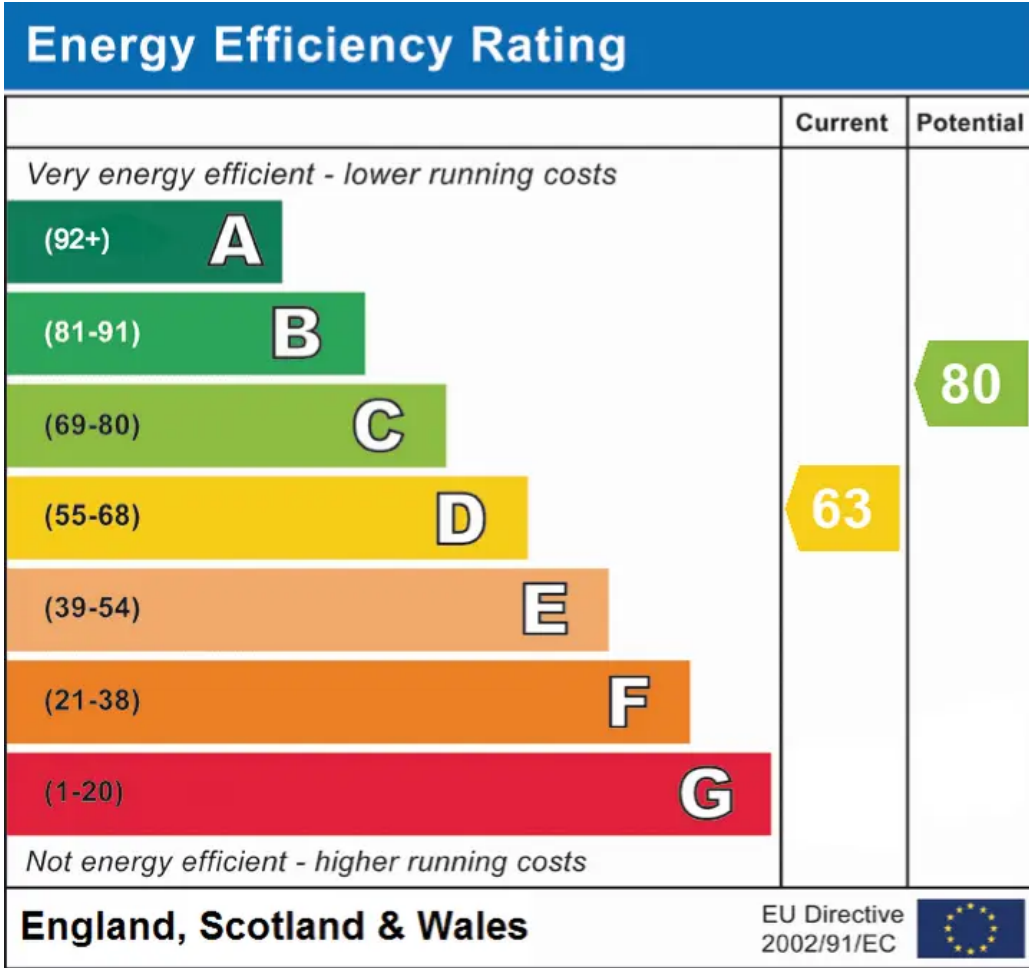
Approximate total area⁽¹⁾

1294.44 ft²

120.26 m²

(1) Excluding balconies and terraces

While every attempt has been made to ensure accuracy, all measurements are approximate, not to scale. This floor plan is for illustrative purposes only.



Chinneck Shaw

Bridge House, Milton Road, Portsmouth – PO3 6AN

023 9282 6731

hello@chinneckshaw.co.uk

www.chinneckshaw.co.uk/

Chinneck Shaw, Bridge House, Milton Road, PO3 6AN Consumer Protection from Unfair Trading Regulations 2008: These details are for guidance only and complete accuracy cannot be guaranteed. If there is any point which is of particular importance, verification should be obtained. The do not constitute a contract or part of a contract. All measurements are approximate. No guarantee can be given with regard to planning permissions or fitness for purpose. No apparatus, equipment, fixture or fitting has been tested. Items shown in the photographs are NOT necessarily included. Interested Parties are advised to check availability and make an appointment to view before travelling to see a property.