



5 Mill House

Hawthorn Way | Storrington | West Sussex | RH20 4PR

A purpose built ground floor flat conveniently located in the heart of the village centre. Accommodation comprises: two bedrooms, sitting room, balcony, kitchen and bathroom. Outside, there is communal parking.

Entrance Own private front door to:

Entrance Hall Night storage heater, built-in cloaks cupboard.

Sitting Room 16' 7" x 11' 1" (5.05m x 3.38m) Two night storage heaters, telephone point, uPVC double glazed windows, door leading to balcony.

Kitchen 8' 1" x 7' 1" (2.46m x 2.16m) Range of black granite style working surfaces with stainless steel single drainer sink unit, space and plumbing for washing machine, range of eye-level cupboards, uPVC double glazed window overlooking communal gardens.

Bedroom One 15' 1" x 9' 8" (4.6m x 2.95m) Built-in wardrobe cupboards, night storage heater, uPVC double French doors leading to balcony.

Bedroom Two 9' 8" x 7' 9" (2.95m x 2.36m) uPVC double glazed windows, built-in wardrobe cupboards, night storage heater.

Re-Fitted Bathroom Panelled bath with fitted independent shower unit, wall-mounted wash hand basin with toiletries cupboards under, low level push flow w.c., heated chrome towel rail, extractor fan.

Outside

Communal Gardens Attractive communal gardens to front and rear.

Parking Communal parking area.

Lease details: 999 years from 1972.
Maintenance approx. £600 per quarter, £10 ground rent.

EPC Rating: Band D.

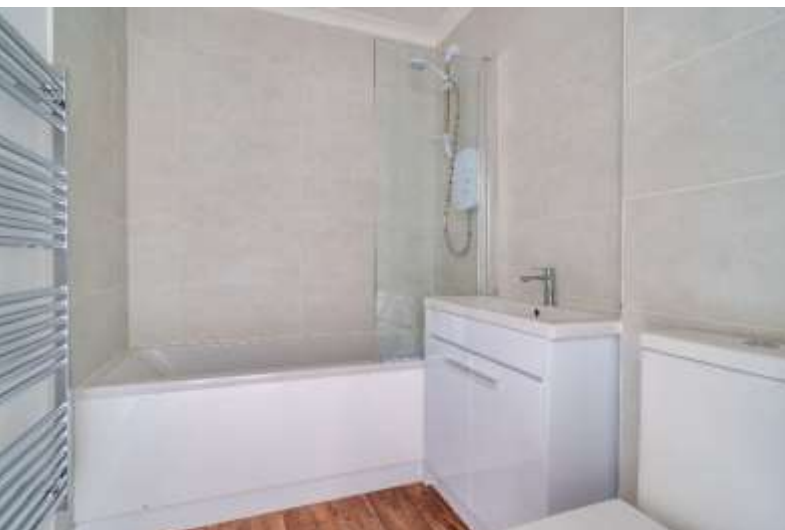


Fowlers Greenfield House, The Square, Storrington, West Sussex, RH20 4DJ

www.fowleronline.co.uk

storrington@fowleronline.co.uk

01903 745844



Important Notice

1. Fowlers wish to inform all prospective purchasers that these sales particulars do not form part of any contract and have been prepared in good faith to give a fair overall viewing of the property.
2. We have not undertaken a structural survey, nor tested that the services, appliances, equipment or facilities are in good working order.
3. Fowlers cannot verify that any necessary consents have been obtained for conversions, extensions and other alterations such as underpinning,

garaging and conservatories etc. Any reference to such alterations is not intended as a statement that any necessary planning or building consents have been obtained and if such details are fundamental to a purchase, then prospective buyers should contact this office for further information or make further enquiries on their own behalf.

4. Any area, boundary, distances or measurements referred to are given as a guide only and should not be relied upon. If such details are fundamental to a purchase, please contact this office for further information.

5. The photographs shown in these details show only certain aspects of the property at the time they were taken. Certain aspects therefore may have changed and it should not be assumed that the property remains precisely as displayed in the photographs.
6. Fowlers cannot verify whether the property and its grounds are subject to any restrictive covenants, rights of way, easements etc, and purchasers are advised to make further enquiries to satisfy themselves on these points.