



7 Alexandra Terrace,
Haydon Bridge, Hexham, Northumberland, NE47 6LW

youngsRPS 

7 Alexandra Terrace Haydon Bridge Hexham Northumberland NE47 6LW

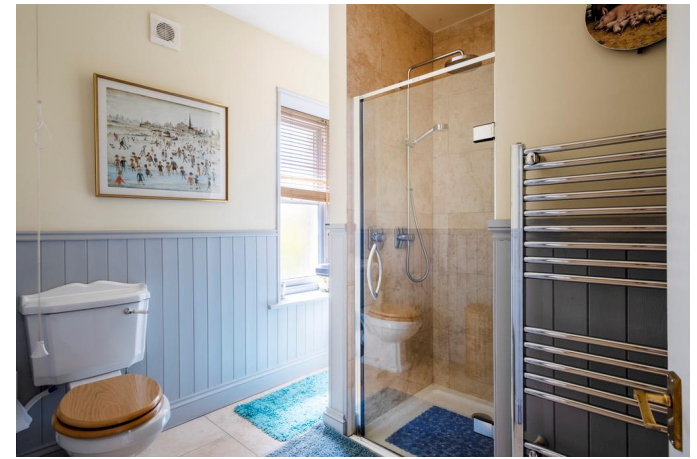
Three bedroom mid-terraced property enjoying a southerly aspect on the periphery of Haydon Bridge, offering well-proportioned accommodation full of character and charm.

- Three bedrooms
- Mid-terraced property
- Stone built
- Well-proportioned accommodation
- Full of character and charm
- Pleasant south facing garden
- Popular village location
- Energy efficiency rating E

youngsRPS 

01434 608980





DESCRIPTION

Located in a popular terrace on the periphery of Haydon Bridge, this three bedroom mid terraced cottage enjoys a southerly aspect, full of charm and character with ceiling coving, panelled doors and deep skirting boards, we strongly recommend an internal inspection.

Benefiting from oil central heating and sash style windows, internally the property has undergone extensive refurbishment and updating in recent years to a high standard creating a light spacious and generously proportioned home.

The accommodation briefly comprises of entrance reception hall with staircase leading to the first floor, sitting room with wood burning stove, spacious breakfasting kitchen with integral appliances and inglenook fireplace housing multi fuel burning stove, rear hallway with external door and cloakroom. To the first floor there are three good sized bedrooms and a shower room. Externally there is a south facing front garden laid to lawn with mature planting to the rear a enclosed yard with outhouse.

LOCATION

Alexandra Terrace is a popular area within the village of Haydon Bridge. The village benefits from many local amenities including a small supermarket and post office, newsagents, pharmacy, hair and beauty salon, social club and public houses. The village benefits from two great schools, Shaftoe Trust Academy and Haydon Bridge High School.

The village is ideal for commuting east to Newcastle and west to

Carlisle due to its proximity to the A69, there is also railway station and regular bus services.

SERVICES

Mains electricity, water and drainage are connected. Oil central heating to radiators also supplying the domestic hot water.

CHARGES

Northumberland County Council tax band C.

VIEWINGS

Viewing is strictly by appointment. Arrangements can be made by contacting YoungsRPS, Hexham on 01434 608980.

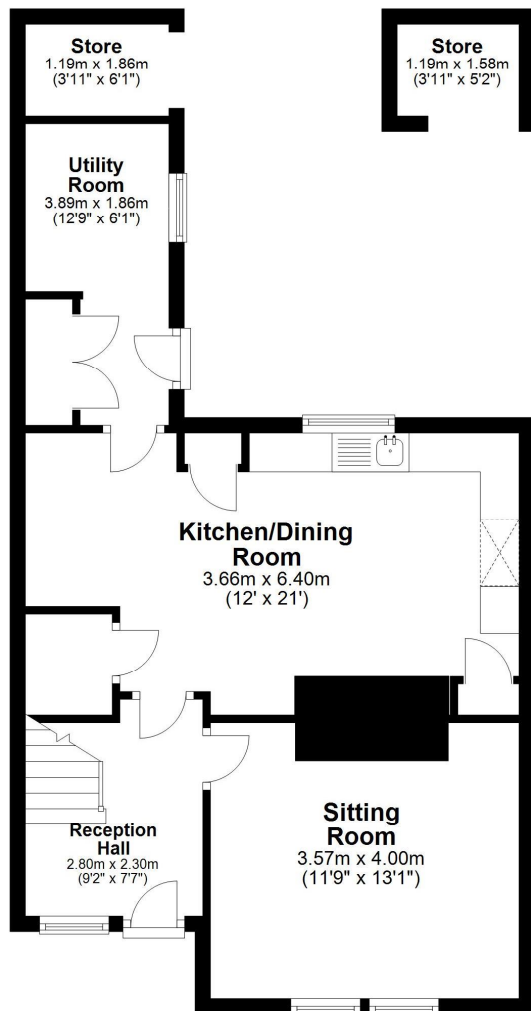
FREE MARKET APPRAISAL

We would be pleased to provide professional, unbiased advice on the current value and marketing of your existing home.



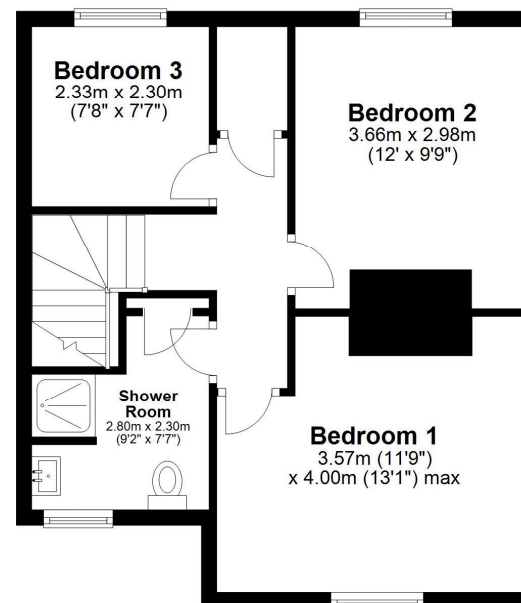
Ground Floor

Approx. 56.1 sq. metres (603.5 sq. feet)



First Floor

Approx. 44.4 sq. metres (477.9 sq. feet)



Total area: approx. 100.5 sq. metres (1081.4 sq. feet)

7 Alexandra Terrace, HEXHAM

IMPORTANT NOTE: Consumer Protection from Unfair Trading Regulations 2008 and the Business Protection from Misleading Marketing Regulations 2008: We endeavour to make our sales particulars accurate and reliable. They should be considered as general guidance only and do not constitute all or any part of the contract. None of the services, fittings and equipment have been tested. Measurements, where given, are approximate and for descriptive purposes only. Boundaries cannot be guaranteed and must be checked by solicitors prior to exchange of contracts. Prospective buyers and their advisers should satisfy themselves as to the facts, and before arranging an inspection, availability. Further information on points of particular importance can be provided. No person in the employment of YoungsRPS (NE) Ltd has any authority to make or give any representation or warranty whatever in relation to this property.



R201

NORTHALLERTON
General: 01609 773004
Land Agency: 01609 781234

northallerton@youngsrps.com

SEDGEFIELD
General: 01740 617377
Land Agency: 01740 622100

sedgefield@youngsrps.com

NEWCASTLE
General: 0191 261 0300

newcastle@youngsrps.com

HEXHAM
General: 01434 608980
Land Agency: 01434 609000

hexham@youngsrps.com

DUMFRIES
General: 01387 402277

dumfries@youngsrps.com