



5D MEADOW PLACE, CRIEFF, PH7 4DU

OFFERS OVER £85,000

IrvingGeddes  
W.S. • Solicitors • Estate Agents

## 5D Meadow Place, Crieff, PH7 4DU

Irving Geddes are delighted to offer for sale this very well appointed two bedroom end terraced first floor flat, enjoying a very central location in the ever popular market town of Crieff. With bright and spacious accommodation throughout, comprising: ENTRANCE HALL, STORAGE CUPBOARDS, LOUNGE with new fitted KITCHEN, TWO DOUBLE BEDROOMS and BATHROOM.

The property also boasts an area of private garden ground to the rear which is laid to lawn and the boundaries are formed by timber fences. A fantastic first time buy or investment property with broad rental appeal, offered in move-in condition.

### Viewing

Strictly by appointment through Irving Geddes W.S. on 01764 653771

### Energy Performance

Rated 'D' for energy efficiency.

**Council Tax Band 'B'.**

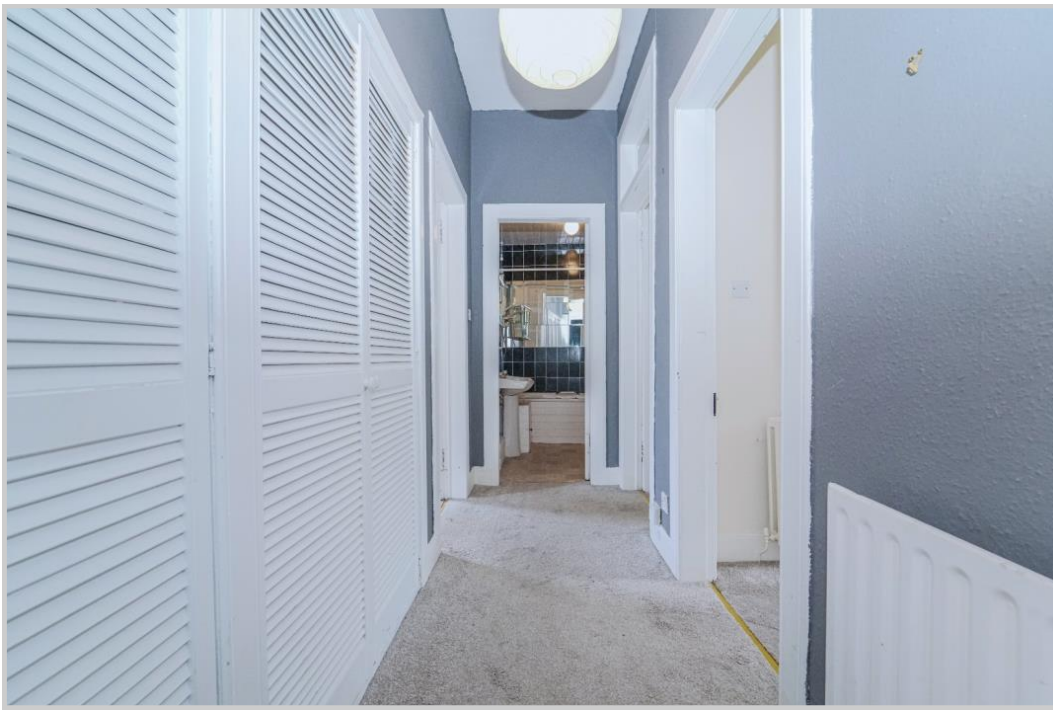




These particulars are believed to be correct, but their accuracy is not guaranteed and they do not form part of any contract. All measurements shown are approximate only.



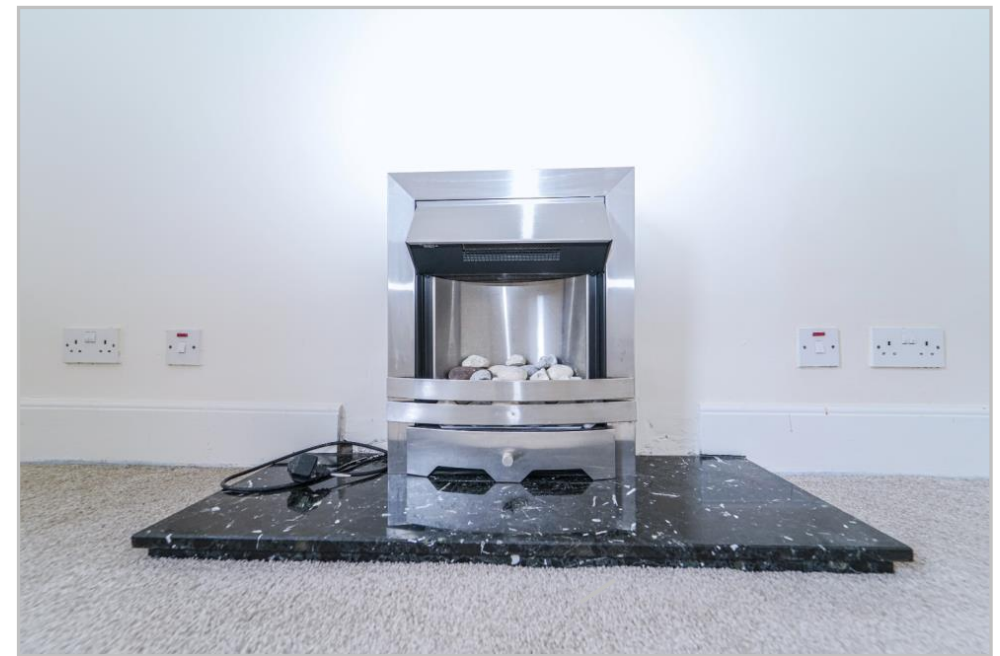
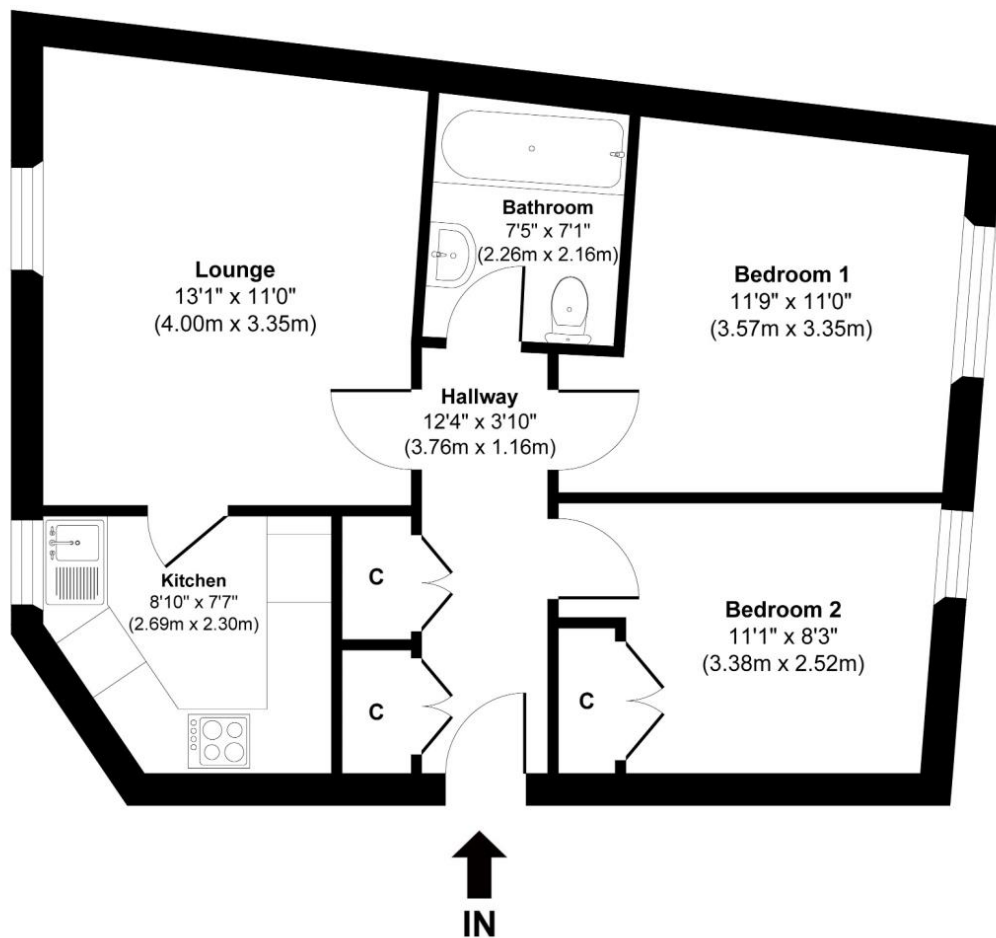
These particulars are believed to be correct, but their accuracy is not guaranteed and they do not form part of any contract. All measurements shown are approximate only.



These particulars are believed to be correct, but their accuracy is not guaranteed and they do not form part of any contract. All measurements shown are approximate only.



Irving **Geddes**  
W.S. • Solicitors • Estate Agents



### Directions

From our offices on West High Street, cross over the road and travel down Galvelmore Street. At the bottom turn right & no.5D is located on the right.



Thinking of selling?

Call us now for a free valuation for your own property.

**Crieff**

25 West High Street, PH7 4AU  
Tel: 01764 653771

**Comrie**

1 Drummond Street, PH6 2DW  
Tel: 01764 670325

**Aberfeldy**

6 The Square, PH15 2DD  
Tel: 01887 822722