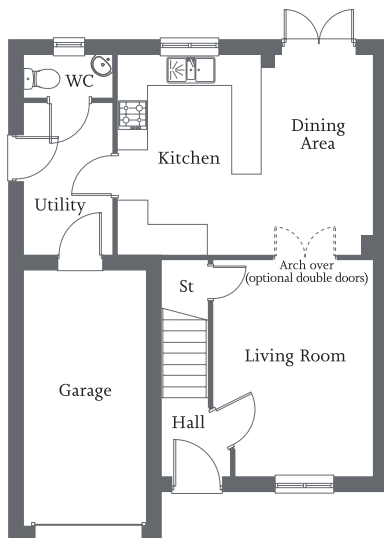


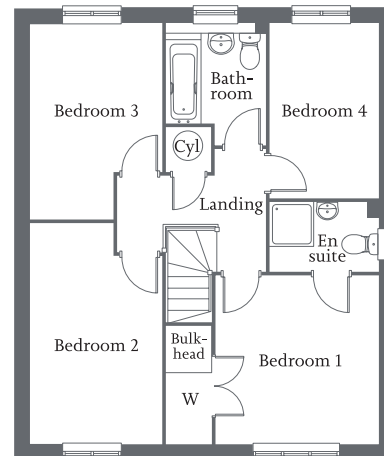


Front aspect living room | Open-plan kitchen/dining area with French Doors to rear |  
Bedroom 1 with en suite and fitted wardrobe | Three further bedrooms and family bathroom | Integral garage and parking spaces |



**Ground Floor**

Living Room	3.24m x 4.37m	10'7" x 14'4"
Kitchen/Dining Area	5.17m x 4.01m	17'0" x 13'2"
Utility	1.75m x 3.06m	5'9" x 10'0"
WC	1.75m x 0.85m	5'9" x 2'9"



**First Floor**

Bedroom 1 (excl. wardrobe)	3.28m x 3.41m	10'9" x 11'2"
En suite	2.18m x 1.38m	7'2" x 4'6"
Bedroom 2	2.67m x 4.46m	8'9" x 14'8"
Bedroom 3	2.67m x 3.97m	8'9" x 13'0"
Bedroom 4	2.18m x 3.51m	7'2" x 11'6"
Bathroom	1.99m x 2.26m	6'6" x 7'5"