



Northern Burway, Chertsey KT16







# Northern Burway, Chertsey KT16

**Description:** The 50ft dutch barge presently on the mooring has a current boat safety certificate until 28th June 2025 and was last out of the water in May 2013 for a full survey (copy available on request). The vessel is arranged with access into the galley and open plan to the lounge with a separate double bedroom and toilet.

The vessel is offered for sale separately for £99,950 and is currently on a Freehold mooring with garden plot priced at £450,000. The owners will consider offers for both or separately.

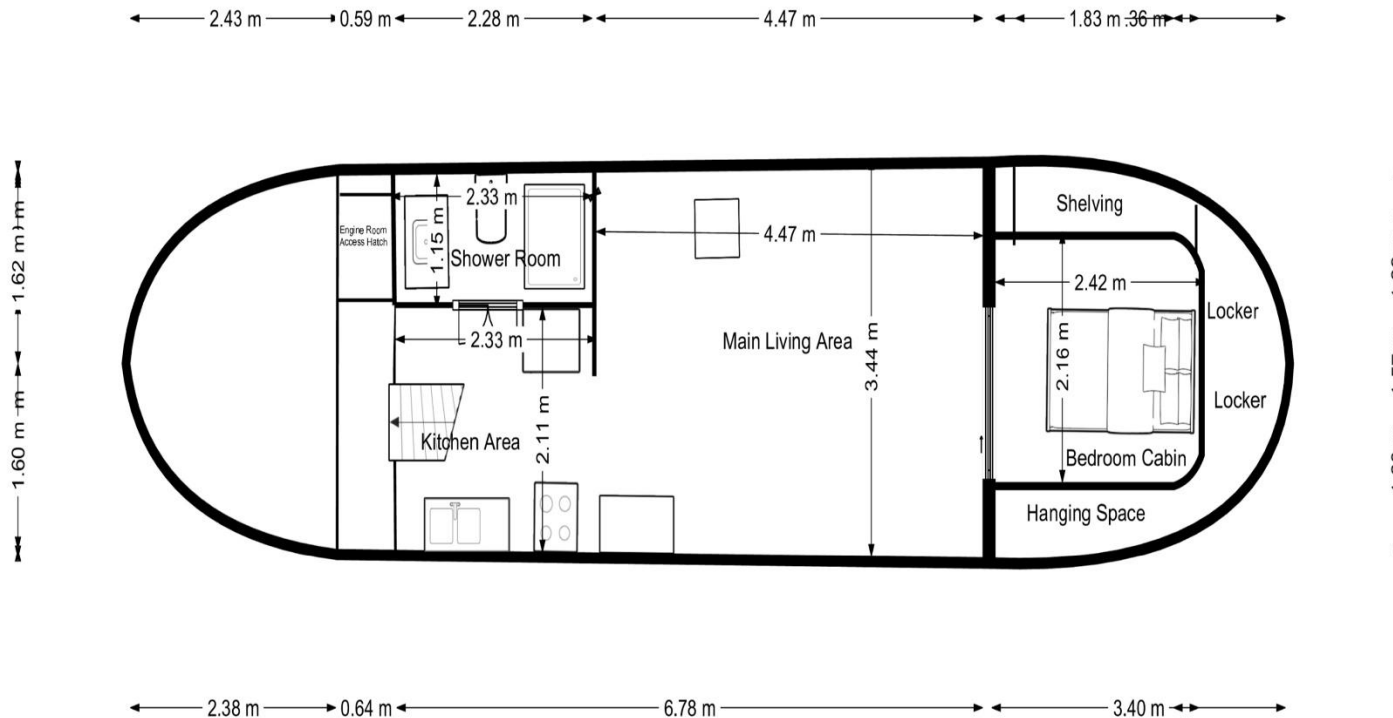
**Tenure:** Freehold

**Council Tax:** Band D

**£95,000**



## Op Hoop Van Zeegan



### Vessel Specification:

- Dutch barge constructed in 1904, first registered 1907 in Groningen. Construction is close to Ijsselaak style.
- 50' length including rudder, 12' width, head-room in cabin goes from approx. 5' to approx. 6.5'
- Tiller steering from open rear deck, no wheelhouse.
- Tarpaulin and insulation roof, with original deck hatching still openable on one side (allowing access for larger furniture items)
- Steel construction, fully repainted with epoxy coating in 2013, topsides repainted in 2018, all Jotun paint.
- Compost toilet, shower, sink and washing machine (machine new in 2019)
- Galley kitchen with gas hobs and oven/grill, serviced in 2020. Gas bottle locker on rear deck.
- Lounge area with wood burning stove, installed 2017 and regularly maintained and built in shelves and storage.
- Bedroom with double bed and fitted shelving/rails, Steel cold water holding tank below bed.
- Storage area in front hold.
- Portals throughout, with skylights in lounge and bedroom.
- Interior was rebuilt in 2011 with Kingspan insulation throughout.
- Whale gulper bilge pump with automatic emergency function as well as additional manual pump.
- Perkins diesel engine approx. 65HP, both keel and air cooled.
- Original grapnel anchor plus fluke anchor
- Collapsible foremast.
- Removeable stove flue.

Important Notice: 1. These particulars have been prepared in good faith as a general guide, they are not exhaustive and include information provided to us by other parties including the seller, not all of which will have been verified by us. 2. We have not carried out a detailed or structural survey; we have not tested any services, appliance or fittings. Measurements, floorplans, orientation and distances are given as approximate only and should not be relied on. 3. The photographs are not necessarily comprehensive or current, aspects may have changed since the photographs were taken. No assumption should be made that any contents are included in the sale. 4. We have not checked that the property has all necessary planning, building regulation approval, statutory or regulatory permissions or consents. Any reference to any alterations or use of any part of the property does not mean that necessary planning, building regulations, or other consents has been obtained. 5. Prospective purchasers should satisfy themselves by inspection, searches, enquiries, surveys, and professional advice about all relevant aspects of the property. 6. These particulars do not form part of any offer or contract and must not be relied upon as statements or representations of fact; we have no authority to make or give any representation or warranties in relation to the property. If these are required, you should include their terms in any contract between you and the seller.

