



Fin Street, Millbay, Plymouth, PL1 3FF

£295,000 LEASEHOLD EPC: B





Fin Street

Millbay, Plymouth

A two bedroom fourth floor waterside apartment offering views over the inner basin, towards Drake Island, The international Ferry Port, Stonehouse Peninsular, Clyde Quay and King Point Marina. The property offers an open plan living room kitchen diner, family bathroom, ensuite and parking space.

Council Tax band: D

Tenure: Leasehold

- Waterside Apartment
- Ensuite to Master
- Family Bathroom
- Storage Cupboard
- Allocated Parking
- Gas Central Heating
- Award Winning Development



Fin Street

Millbay, Plymouth

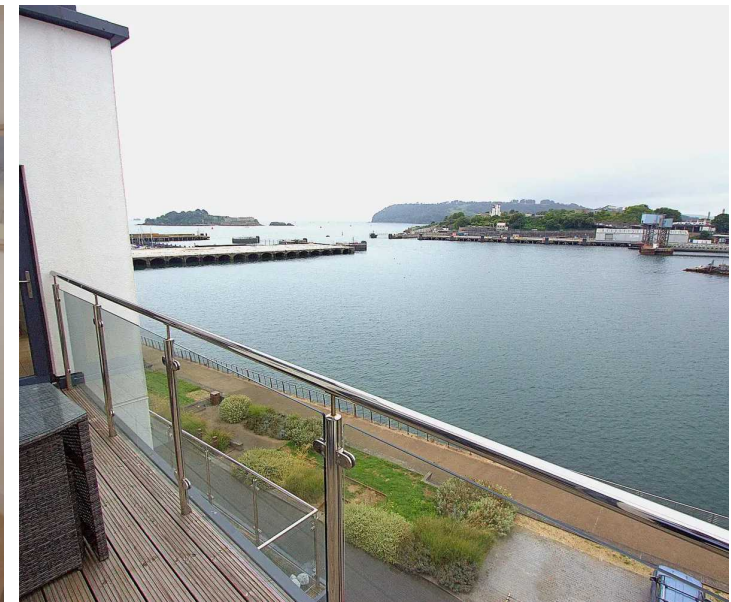
A two bedroom fourth floor waterfront apartment in the popular, award winning Quadrant Quay Development offering a lovely westerly aspect, from Drakes Island to the South, across to the Stonehouse peninsula and the ferry port, towards Clyde Quay and King Point Marina.

The property offers an attractive and open plan lounge, kitchen diner, two double bedrooms, the master with ensuite, a family bathroom and an ample storage cupboard with a separate boiler cupboard.

Externally, the property offers an allocated parking space

Millbay is an exciting coastal development which is being led by English Cities Fund.

For further information please visit: <https://www.millbayplymouth.com/about-millbay/the-story-so-far/>



Fin Street

Plymouth

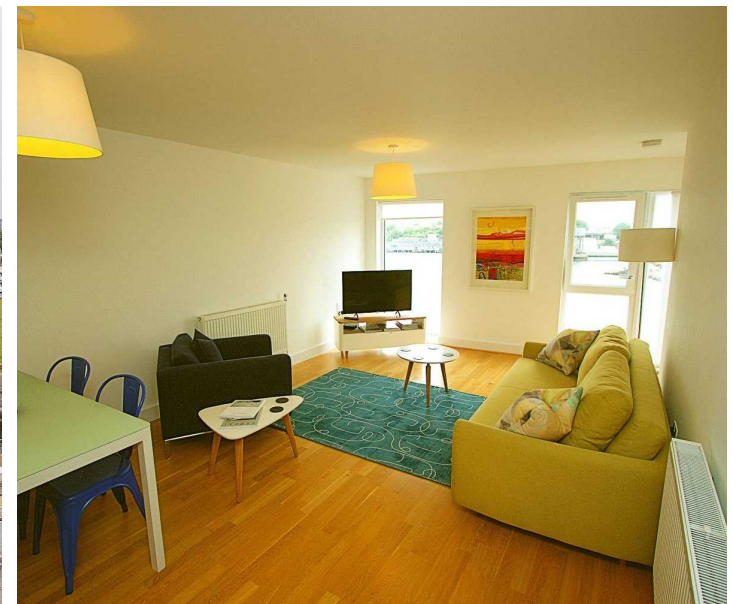
Council Tax band: D

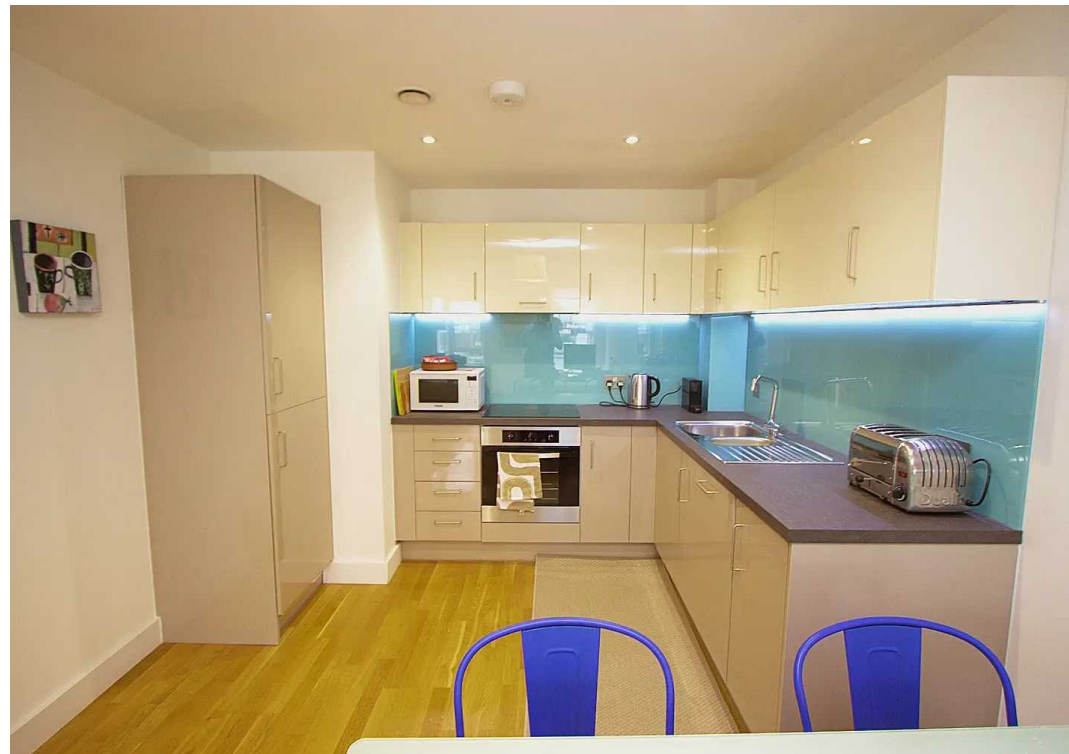
Tenure: Leasehold

Lease Length 233 years approx

Service Charge £1,883.28 approx

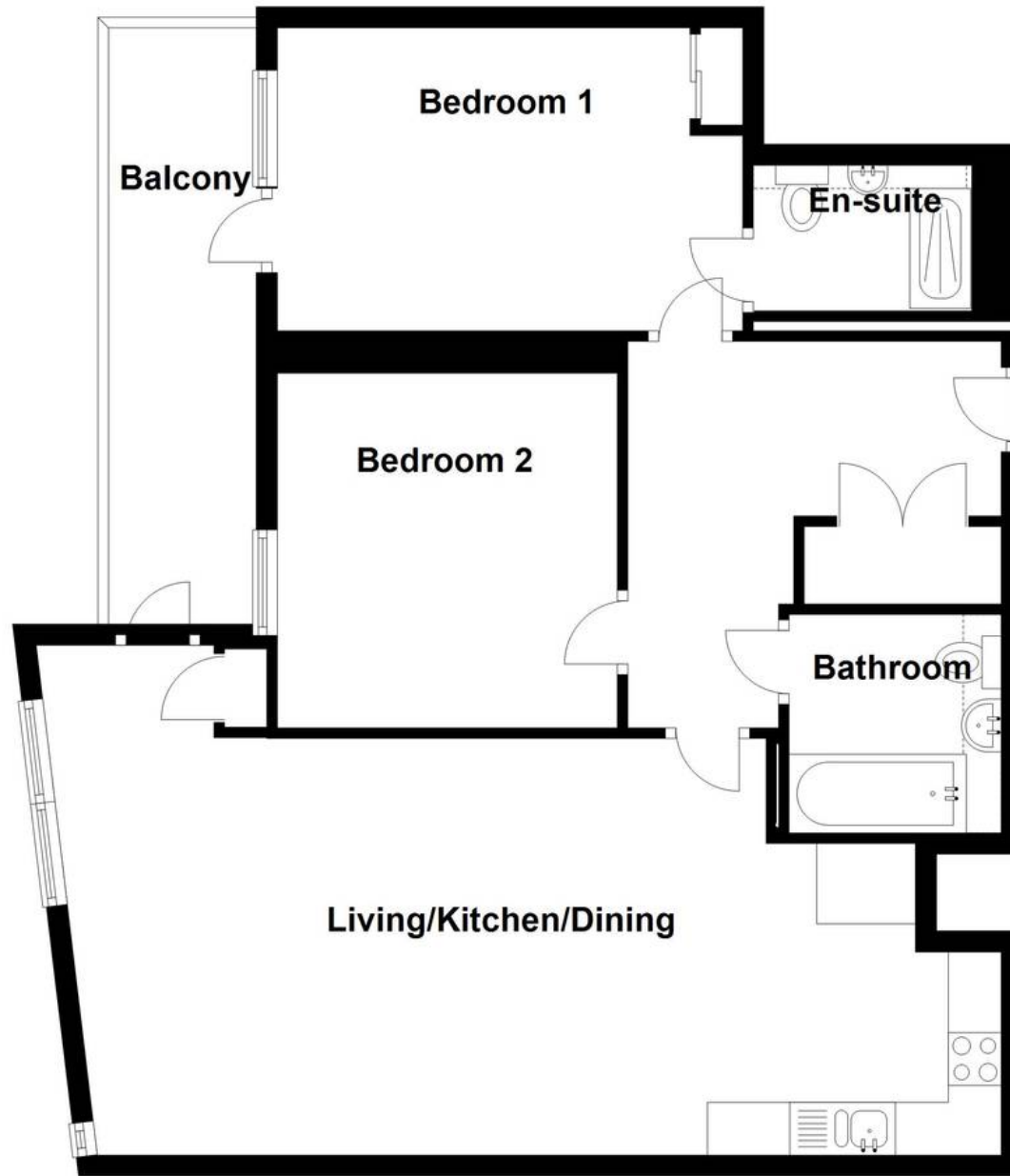
Ground Rent £250.00





Ground Floor

Approx. 72.5 sq. metres (780.2 sq. feet)



Total area: approx. 72.5 sq. metres (780.2 sq. feet)

53 Fin Street, Plymouth



Atwell Martin

Atwell Martin, 65 Southside Street – PL1 2LA

01752 202121

plymouthsales@atwell-martin.co.uk

plymouth.atwellmartin.co.uk/

Atwell Martin Plymouth endeavour to ensure the accuracy of property details produced and displayed. Please note that we have not tested any apparatus, equipment, fixtures, fittings or services and so cannot verify that they are connected, in working order or fit for purpose. It is imperative that the buyer of any property makes such checks, prior to purchase so as to satisfy themselves of the properties suitability for their purchase. .