



Allens Drive | Trimley St Martin | | IP11 0WF

**** LIMITED TIME OFFER- 4 UNITS REMAINING-, Havebury Housing are offering to pay buyers legal fees and gift you with a £500 Curry's voucher if you purchase this home****

Brand new three bedroom, shared ownership property available on the Poppyfields Development with Havebury Housing Partnership. This beautiful end of terrace property benefits from a fully fitted modern kitchen, allocated parking for two cars and carpets & flooring throughout. Price based on a 40% share. Shares available from 25% - 75%.

Shared Ownership £125,000

- Brand New
- Shared Ownership
- Three Bedrooms
- Semi Detached
- Allocated Parking For Two Cars
- No Staircase Restrictions
- Downstairs W/C
- Buyers Incentive

Approximate Room Sizes

ENTRANCE HALL

KITCHEN 11' 1" x 8' 4" (3.39m x 2.56m) A modern kitchen with a range of base and wall units. Roll edge work surfaces with inset single bowl and drainer sink unit. Integrated hob, cooker and extractor. Space for appliances.

LOUNGE/DINER 15' 4" x 12' 8" (4.68m x 3.88m)

WC

FIRST FLOOR LANDING

BEDROOM 1 11' 9" x 10' 2" (3.6m x 3.11m)

BEDROOM 2 11' 4" x 8' 8" (3.46m x 2.66m)

BEDROOM 3 11' 4" x 6' 3" (3.46m x 1.92m)

BATHROOM White suite comprising of a close coupled wc, pedestal wash hand basin, panelled bath with shower over. Heated towel rail and complimentary tiling.

OUTSIDE SPACE The rear gardens commence with a patio area and the remainder laid to lawn. Timber shed and fence. Parking for two cars

AGENTS NOTE

Full Price: £312,500

40% Share: £125,000

60% Rent: £429.69pcm

Service Charge: £32.79pcm

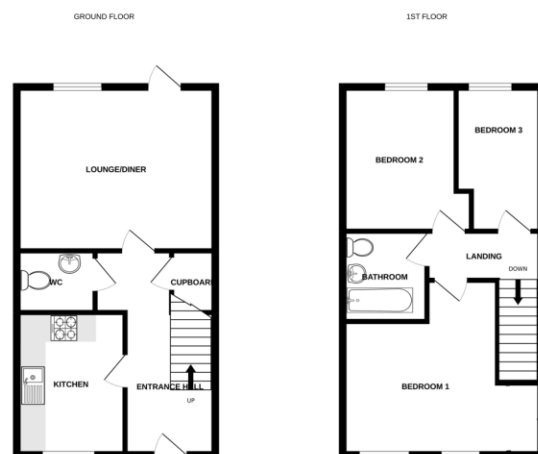
Local Authority – East Suffolk Council

Council Tax Band – TBC

Tenure – Leasehold

Services – Gas Central Heating

Post Code – IP11 0WF



Whilst every effort has been made to ensure the accuracy of the floorplan, measurements are approximate and should not be relied upon for any legal purpose. The plan is for guidance purposes only and should not be used as a substitute for a professional valuation. The views expressed are those of the agent and do not represent the views of the seller. Please see the agent for more information.



Contact Details

6 The Traverse, Bury St Edmunds, IP33 1BJ

Tel: 01284 769598

Email: burystedmunds@bychoice.co.uk

Agents Note: Whilst every care has been taken to prepare these sales particulars, they are for guidance purposes only. All measurements are approximate and for general guidance purposes only and whilst every care has been taken to ensure their accuracy, they should not be relied upon and potential buyers are advised to check the measurements.

