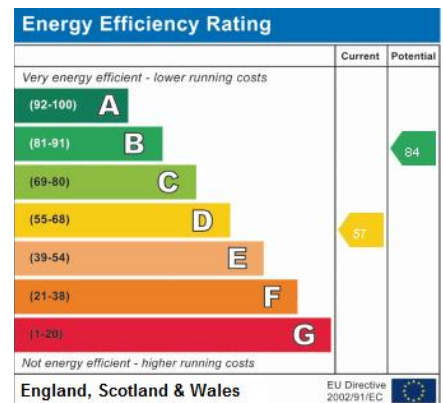
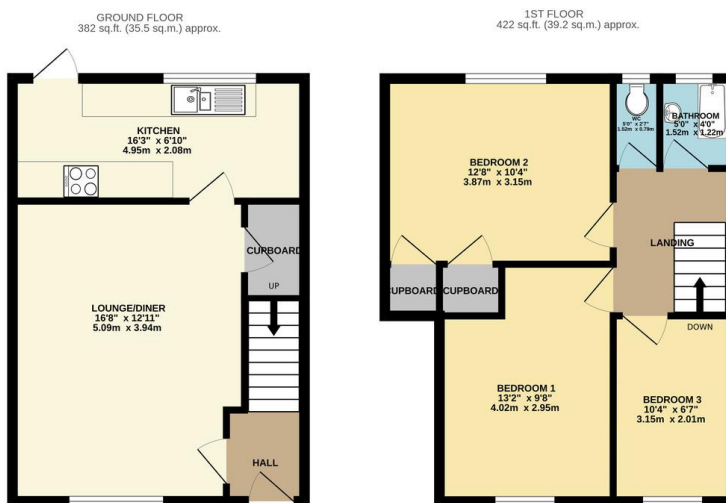




FOR SALE

3 Bed Mid Terraced House in Featherstone Drive, Leicester LE2 9RD
£210,000

This neatly presented three bedroom mid town house is situated on a quiet street location within the popular estate of Eyres Monsell. comprising main entrance hall, lounge and diner, fitted kitchen landing to three bedrooms, bathroom and WC, landscaped front and rear gardens. Overlooking a mature park area, the property comes highly recommended.



- Mid Town House
- Three Bedrooms
- Well Presented
- Highly Popular Location
- Overlooking The Park
- Stylish Fitted Kitchen
- Landscaped Gardens
- Off Road Parking

Agents Note: Whilst every care has been taken to prepare these sales particulars, they are for guidance purposes only. All measurements are approximate and for general guidance purposes only and whilst every care has been taken to ensure their accuracy, they should not be relied upon and potential buyers are advised to recheck the measurements.

