



BRAND NEW HOUSES & APARTMENTS IN CENTRAL WEALDSTONE

Meadow Court, 113-117 High Street, Wealdstone, Harrow, HA3 5DL





"Meadow Court", 113-117 High Street, Wealdstone, HA3 5DL

**EGGER KITCHENS WITH QUARTZ WORKTOPS • BOSCH APPLIANCES • HANSGROHE TAPS • LUXURY BATHROOMS • GAS & ELECTRIC HEATING
• UPVC WINDOWS • PORCELAIN TILING • FITTED ALARMS
PASSENGER LIFT • CHAIN FREE • FREEHOLD HOUSES & 125 YEAR LEASE FOR THE APARTMENTS •
10 YEAR BUILD-ZONE WARRANTY • APARTMENTS FROM £375,000 • MEWS HOUSES AT £585,000 • ENERGY EFFICIENCY RATING FOR HOUSES : B
• ENERGY EFFICIENCY RATING FOR APARTMENTS: TBC • LOCAL AUTHORITY: LONDON BOROUGH OF HARROW •**

A brand new exclusive collection of just nine properties comprising of 6 luxurious two and three bedroom apartments together with three, 3 bedroom 2 bathroom mews houses.

“Meadow Court” is conveniently located for shopping and transport facilities which includes Harrow & Wealdstone BR/Bakerloo Line station providing a frequent service to central London & beyond. With the metropolitan train station is located at Harrow on the Hill. Wealdstone and Harrow provide a wide choice of high street chains, 2 major shopping centres, supermarkets and a cinema complex.

This area is well served for good schools, which includes The Sacred Heart, Whitefriars, Salvatorian Roman Catholic College & Belmont School. Sports and recreational facilities are also well catered for.

Disclaimer

Floorplans shown are for approximate measurements only. Exact layout and sizes may vary. All measurements may vary within a tolerance of 5%. The information in this document is indicative and is intended to act as a guide only as to the finished product, which may vary from the information provided. These particulars should not be relied upon as accurately describing any of the specific matters under the Consumer Protection Regulations 2014. This information does not constitute a contract or warranty. The dimensions given on plans are subject to minor variations and are not intended to be used for carpet sizes, appliance sizes or items of furniture. The appliances and furniture in the kitchens and bathrooms are subject to design. Appliances may vary in each dwelling type / choice subject to build stage. Please consult Sales Advisor for final layouts. The CGI's are indicative only. The photos are from the show house.

Guide Price: The Mews House at £585,000 each & the apartments from £375,000

Tenure: Freehold houses and 125 year leases for the apartments

Energy Efficiency Rating: B rating for the houses. Rating to the apartments to follow

Local Authority: London Borough of Harrow

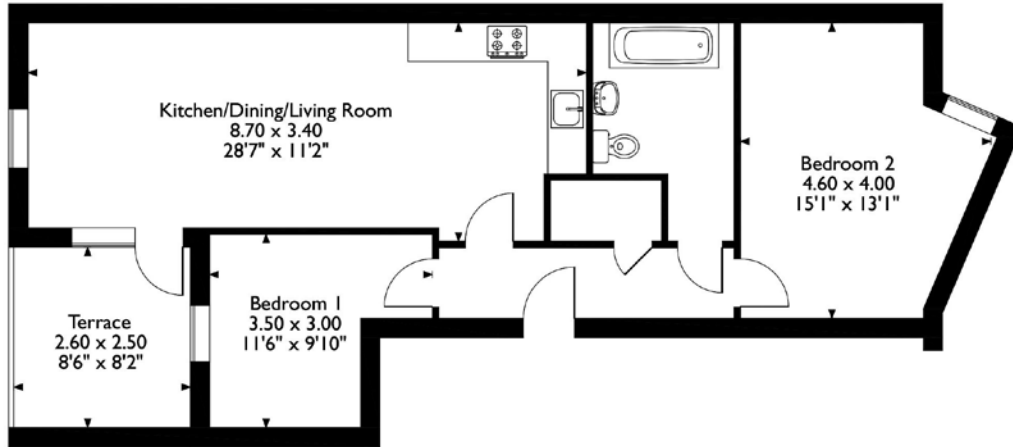
Council Tax Bands: tbc





Apartments 4,5 & 7

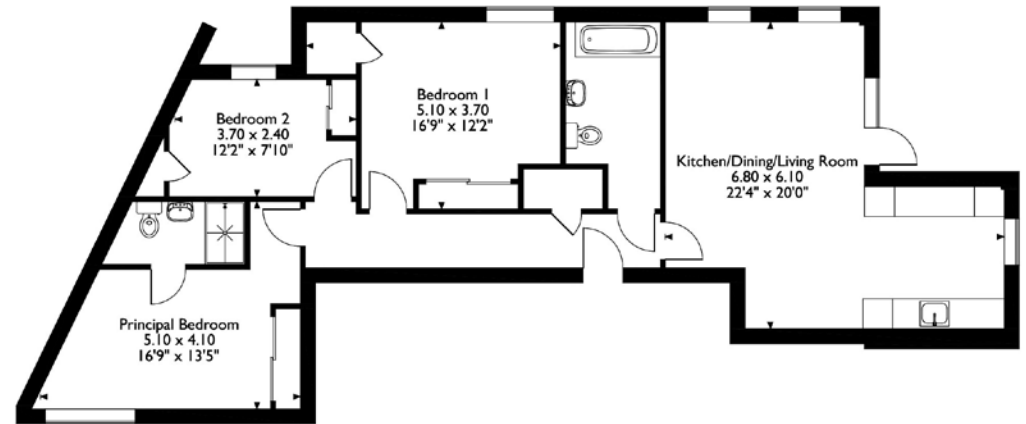
Approximate Gross Internal Area
66 Sq M/710 Sq Ft



Please note that the location of doors, windows and other items are approximate and this floorplan is to be used for illustrative purposes only. Unauthorized reproduction is prohibited.

113 High Street, Flat 6

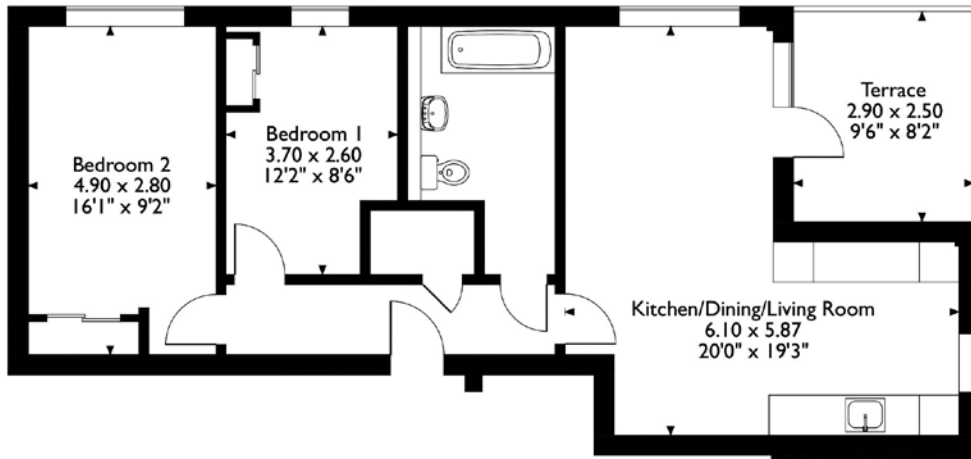
Approximate Gross Internal Area
92 Sq M/990 Sq Ft



Please note that the location of doors, windows and other items are approximate and this floorplan is to be used for illustrative purposes only. Unauthorized reproduction is prohibited.

High Street, Flat 8

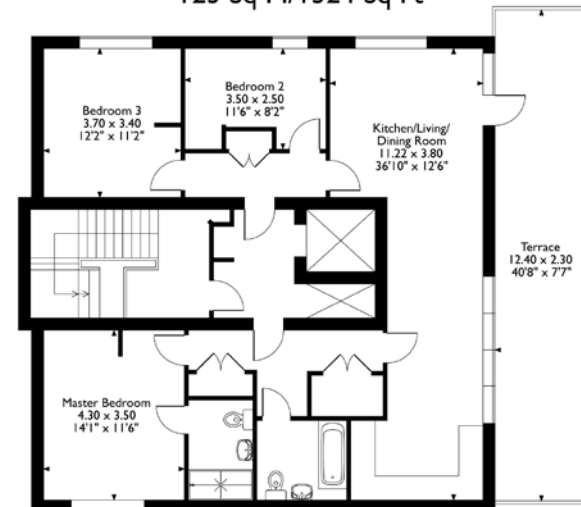
Approximate Gross Internal Area
65 Sq M/700 Sq Ft



Please note that the location of doors, windows and other items are approximate and this floorplan is to be used for illustrative purposes only. Unauthorized reproduction is prohibited.

113 High Street, Flat 9

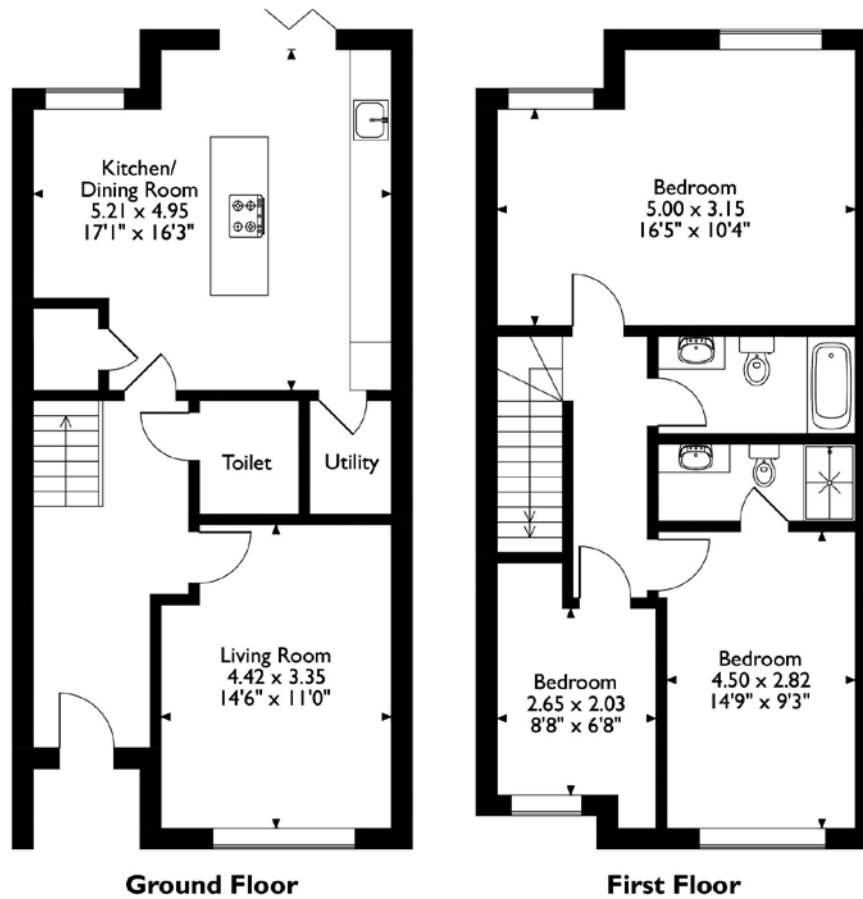
Approximate Gross Internal Area
123 Sq M/1324 Sq Ft



Please note that the location of doors, windows and other items are approximate and this floorplan is to be used for illustrative purposes only. Unauthorized reproduction is prohibited.

1 Graham Road

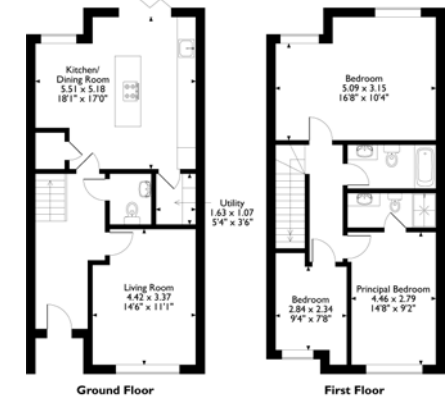
Approximate Gross Internal Area 112 Sq M/1206 Sq Ft



Please note that the location of doors, windows and other items are approximate and this floorplan is to be used for illustrative purposes only. Unauthorized reproduction is prohibited.

1A Graham Road

Approximate Gross Internal Area 112 Sq M/1206 Sq Ft



Please note that the location of doors, windows and other items are approximate and this floorplan is to be used for illustrative purposes only. Unauthorized reproduction is prohibited.

1B Graham Road

Approximate Gross Internal Area 112 Sq M/1206 Sq Ft



Please note that the location of doors, windows and other items are approximate and this floorplan is to be used for illustrative purposes only. Unauthorized reproduction is prohibited.

ROBSONS

LAND & NEW HOMES

1st & 2nd floor offices, 130 High Street, Rickmansworth, WD3 1AB

Tel: 0203 814 1883 or neil.ret@robsonswb.com

www.robsonswb.com

www.

the
londonoffice.co.uk

40 ST JAMES'S PLACE SW1

