

Love Homes



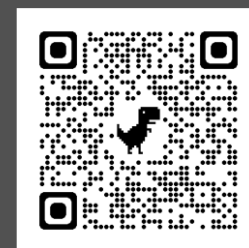
Vicarage Hill, Flitwick, Bedfordshire, MK45 1JA

The property requires modernisation and offers an excellent opportunity for someone to put their stamp on it and make it their own. Enjoying light and airy accommodation with double glazed windows throughout, the property briefly comprises; a 15ft5 living room with patio door accessing the rear garden, a kitchen overlooking the rear garden, two double bedrooms and a bathroom. Outside the rear garden is both private and secluded and is well stocked with established and mature flower bed borders stocked with a variety of plants, shrubs and fruit trees as well as a patio seating area. Further benefits include ample off road parking for several vehicles and a single garage.



This property is presented by Duncan Stead - a Love Homes property expert with over 25 years' experience.

Find out more about this property by scanning the QR code.



0.5m

Tenure: Freehold



2



1

Council Tax: B



1

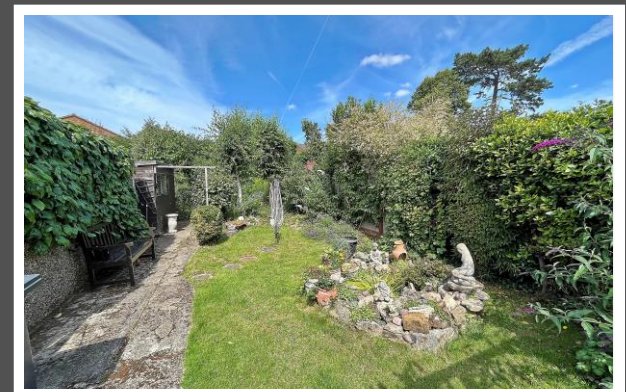




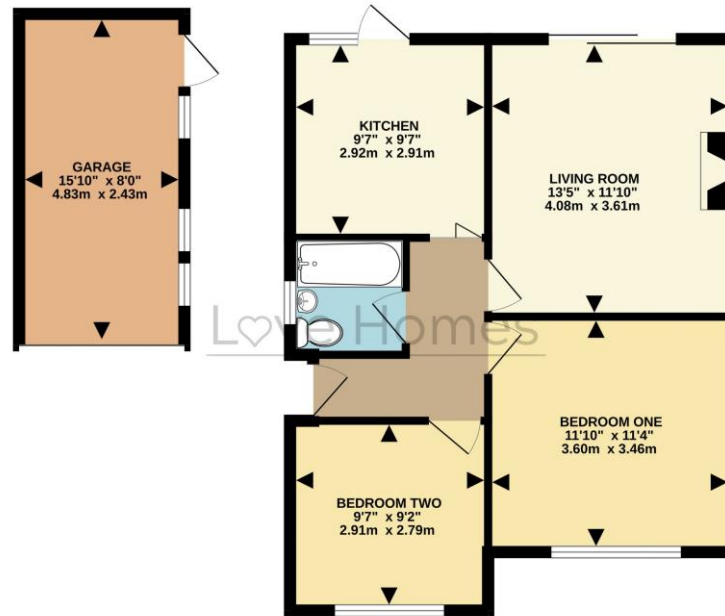
---

"My parents have owned this bungalow since it was first built in the 1960's - it's a lovely area and they made many lifelong friends of their neighbours. The garden was their pride and joy and they created a quiet and secluded haven attracting lots of wildlife and growing lots of different types of fruit. The convenience of have a local shop just yards away is so handy, not only that but being half a mile from the town centre and train station and a short walk to open countryside was just ideal for them."

---



GROUND FLOOR  
675 sq.ft. (62.7 sq.m.) approx.



Score	Energy rating	Current	Potential
92+	A		
81-91	B		88 B
69-80	C		
55-68	D		
39-54	E	46 E	
21-38	F		
1-20	G		



These particulars are set out as a general outline in accordance with the Property Misdescriptions Act (1991) only for the guidance of intending purchasers or lessees, and do not constitute any part of an offer or contract. Details are given without any responsibility, and any intending purchasers, lessees or third parties should not rely on them as statements or representations of fact but must satisfy themselves by inspection or otherwise as to the correctness of each of them. We have not carried out a structural survey and the services, appliances and specific fittings have not been tested. All photographs, measurements, floor plans and distances referred to are given as a guide only and should not be relied upon for the purchase of carpets or any other fixtures or fittings. Gardens, roof terraces, balconies and communal gardens as well as tenure and lease details cannot have their accuracy guaranteed for intending purchasers. Lease details, service ground rent (where applicable) are given as a guide only and should be checked and confirmed by your solicitor prior to exchange of contracts. No person in the employment of Love Homes has any authority to make any representation or warranty whatever in relation to this property. Purchase prices, rents or other prices quoted are correct at the date of publication and, unless otherwise stated, are exclusive of VAT. We retain the copyright in all advertising material used to market this Property. All information is as advised by the seller and subject to change. Council tax bands can be subject to change by the local council.

5 The Russell Centre, Coniston Road, Flitwick, MK45 1QY  
Tel: 01525 713111

Email: [flitwick@lovehomes.uk](mailto:flitwick@lovehomes.uk)

[www.lovehomes.uk](http://www.lovehomes.uk)



**Love Homes**