



Trafford Road, Eccles

Manchester



In Excess of £270,000

Trafford Road

Eccles, Manchester

Stunning period property with original features throughout and coming to the market chain free! This property is perfectly located close to Eccles Centre and Monton Village and excellent transport links. The property offers two spacious reception rooms, three double bedrooms a fitted kitchen & dining area and a modern shower room. There is off road parking for multiple cars to the front of the property.

Council Tax band: C

Tenure: Leasehold

- Chain free property
- Beautiful period features throughout
- Two spacious reception rooms
- Fitted kitchen & dining area
- Three double bedrooms
- Modern shower room to the first floor
- Ample storage throughout
- Off road parking for multiple cars to the front
- Potential for use as a HMO subject to licensing
- Short walk to Eccles Centre & Monton Village
- Surrounded by excellent transport links



Hall

Ceiling light points, power point, composite door, wall mounted radiator and under stairs storage.

Reception One

13' 8" x 11' 9" (4.17m x 3.58m)

Ceiling light point, double glazed windows, wall mounted radiator, storage cupboard and power points.

Reception Two

16' 9" x 11' 9" (5.11m x 3.58m)

Ceiling light point, three wall mounted radiators, double glazed bay window and power point.

Kitchen

11' 9" x 11' 9" (3.58m x 3.58m)

Fitted with a range of wall and base units with complementary work surfaces and integrated sink and drainer unit. Integrated oven and hob with space for a washer and fridge freezer. Ceiling light point, double glazed window, boiler and composite door.

Bedroom One

13' 9" x 11' 9" (4.19m x 3.58m)

Ceiling light point, double glazed window, wall mounted radiator and power point.

Bedroom Two

13' 8" x 11' 9" (4.17m x 3.58m)

Ceiling light point, double glazed window, wall mounted radiator and power point.

Bedroom Three

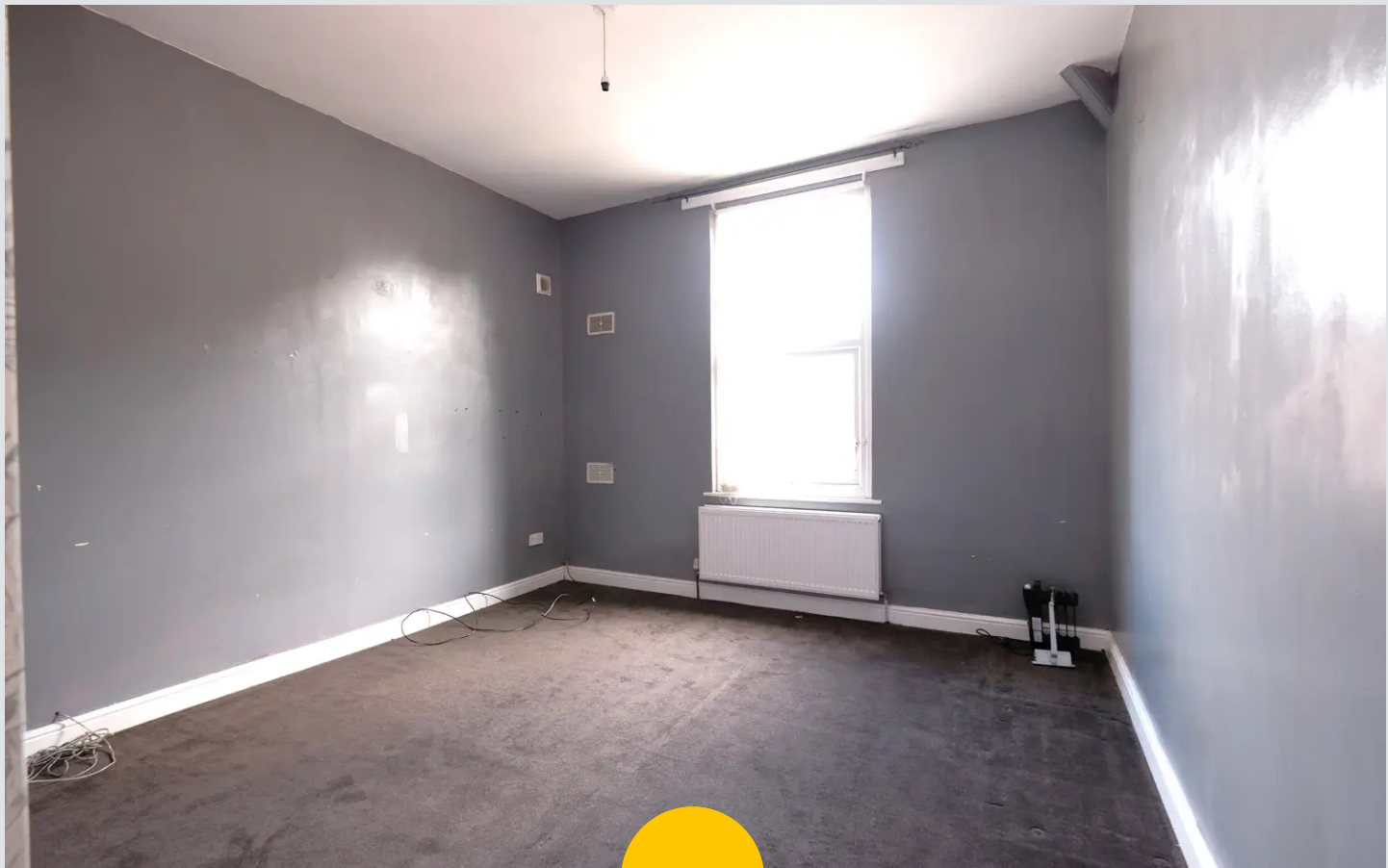
11' 9" x 11' 9" (3.58m x 3.58m)

Ceiling light point, double glazed window, wall mounted radiator and power point.

Bathroom

8' 5" x 5' 9" (2.57m x 1.75m)

Fitted with a three piece suite including a hand wash basin, wc and shower. Ceiling light point, wall mounted radiator and loft access.







Hills | Salfords Estate Agent

Hills Residential, Sentinel House Albert Street - M30 0SS

0161 707 4900

sales@hills.agency

www.hills.agency/



THE PROPERTY MISDESCRIPTIONS ACT 1991 The Agent has not tested any apparatus, equipment, fixtures and fittings or services and so cannot verify that they are in working order or fit for the purpose. A Buyer is advised to obtain verification from their Solicitor or Surveyor. References to the Tenure of a Property are based on information supplied by the Seller. The Agent has not had sight of the title documents. A Buyer is advised to obtain verification from their Solicitor. You are advised to check the availability of this property before travelling any distance to view. Every effort and precaution has been made to ensure these particulars are correct and not misleading but their accuracy is not guaranteed nor do they form part of any contract. If there is any point which is of particular importance to you, please contact us and we will provide any information you require. This is advisable, particularly if you intend to travel some distance to view the property. The mention of any appliances and services within these details does not imply that they are in full and efficient working order. These particulars are in draft form awaiting Vendors confirmation of their accuracy. These details must therefore be taken as a guide only.