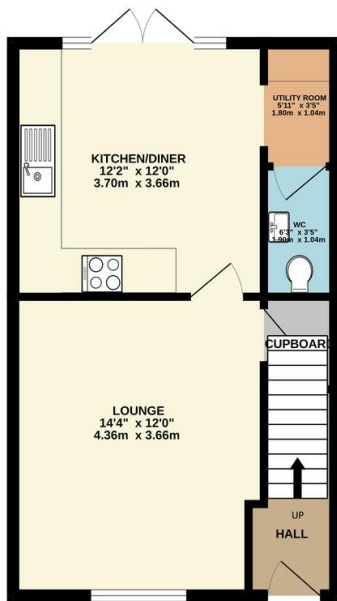


Property Summary

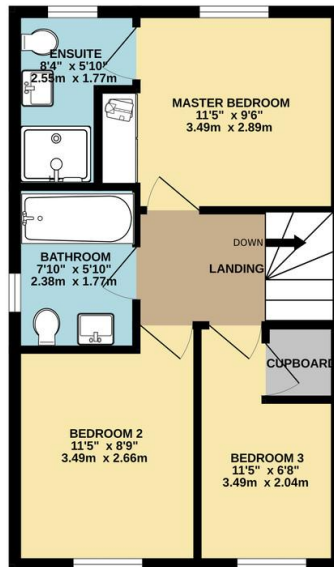
This immaculate three bedroom semi detached modern home is situated within the sought after Cottage Farm development in Oadby. The accommodation comprises main entrance hall, lounge, fitted kitchen /diner, utility room, ground floor WC, landing to three bedrooms, master with ensuite shower, family bathroom, front and rear landscaped gardens, off road parking. Internal inspection comes highly recommended.



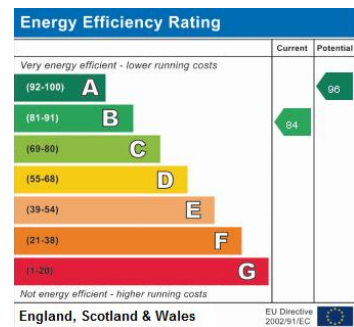
GROUND FLOOR
407 sq.ft. (37.8 sq.m.) approx.



1ST FLOOR
407 sq.ft. (37.8 sq.m.) approx.



TOTAL FLOOR AREA: 814 sq.ft. (75.7 sq.m.) approx.
Whilst every attempt has been made to ensure the accuracy of the floorplan contained here, measurements of doors, windows, rooms and any other items are approximate and no responsibility is taken for any error, omission or mis-statement. This plan is for illustrative purposes only and should be used as such by any prospective purchaser. The services, systems and appliances shown have not been tested and no guarantee as to their operability or efficiency can be given.
Made with Metroplex ©2023



- Modern Semi Detached
- Three Bedrooms
- Immaculate Presentation
- Master Ensuite Shower
- Ground Floor W.C
- Landscaped Gardens
- Highly Sought After Location
- Modern Estate

phillips george | sales & lettings

Agents Note: Whilst every care has been taken to prepare these sales particulars, they are for guidance purposes only. All measurements are approximate and for general guidance purposes only and whilst every care has been taken to ensure their accuracy, they should not be relied upon and potential buyers are advised to recheck the measurements

46 Long Street, Wigston, Leicestershire, LE18 2AH

info@phillipsgeorge.co.uk
0116 216 8178

