





Property Summary

Just off of Hither Green Lane, can be found this mid-terraced two bedroom Victorian style house. The property benefits from two double bedrooms, a large through lounge, a second reception / dining room, modern newly fitted kitchen, family bathroom and also a private garden to rear. Other benefits to note include close proximity to Hither Green BR station, Lewisham High Street and Town Centre. This property is being refurbish at the moment and it is available to rent from the end of July.

Property Features

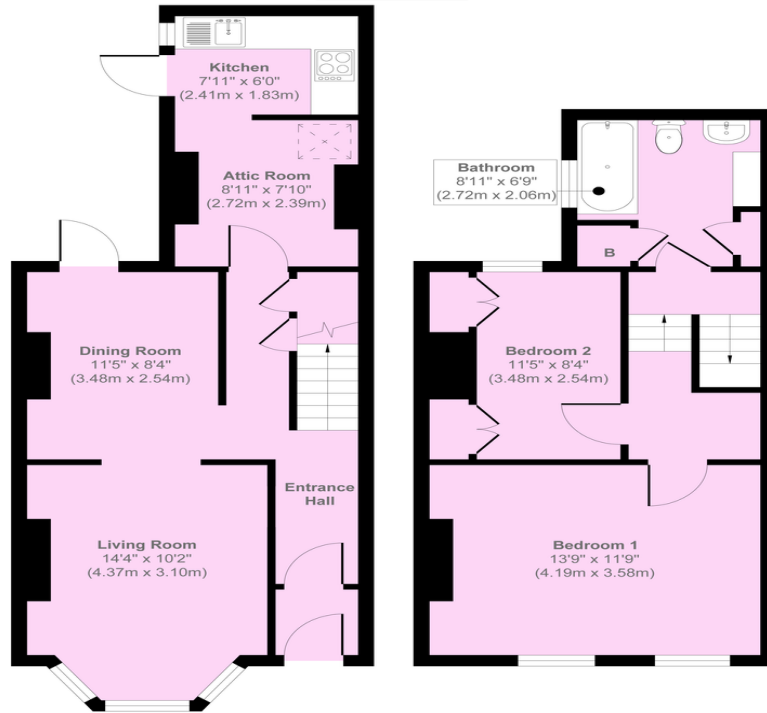
- 2 double Bedroom House
- Newly fitted Kitchen
- Currently being decorated
- Available from end of July
- Private Garden
- Newly fitted flooring
- Close to Hither Green ST





Harvard Road

Mark Beaumont



Ground Floor
Approximate Floor Area
463 sq. ft
(43.01 sq. m)

First Floor
Approximate Floor Area
398 sq. ft
(36.97 sq. m)

Approx. Gross Internal Floor Area 861 sq. ft / 79.98 sq. m

Illustration for identification purposes only, measurements are approximate, not to scale.

Copyright © markbeaumont.com

Produced by Elements Property

197 South London Branch, Lewisham
High Street, London, SE13 6AA

www.markbeaumont.com
lettings@markbeaumont.com
020 8852 5000

Agents Note: Whilst every care has been taken to prepare these particulars, they are for guidance purposes only. All measurements are approximate and are for general guidance purposes only and whilst every care has been taken to ensure their accuracy, they should not be relied upon and we advise to recheck the measurements. All inclusive tenancy start-up fee £399. Includes: VAT, References, Administration Charge, Tenancy Agreement, (up to 2 tenants). Additional Tenants charged at £150 inclusive, per additional tenant. Guarantor fee's: £150 per guarantor. (Where necessary). Check out fee from £80 - £120 depending on the size of the property. Ask for a scale of charges in branch. Holding Deposit: £200