



Lr
LAWRENCE RAND
01895 632211
FOR SALE



LAWRENCE RAND

Cassiobury Park Avenue, Watford

£749,950

Cassiobury Park Avenue

Watford, Watford

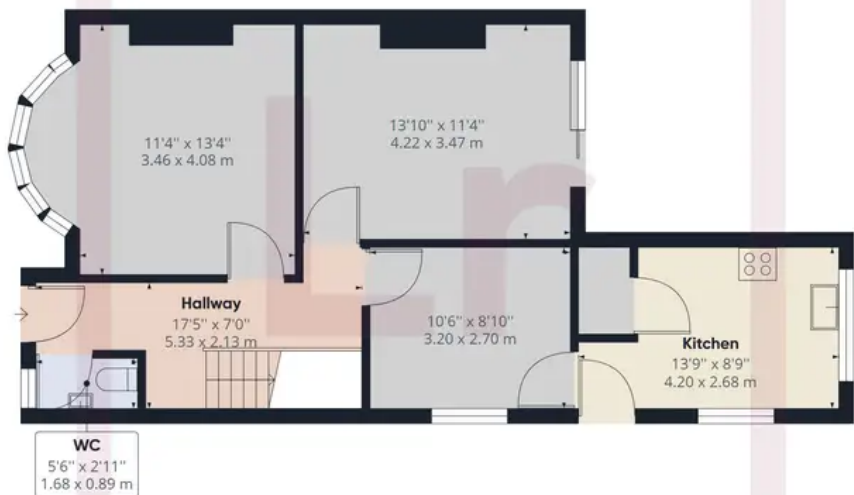
Situated in arguably one of the areas most sought after roads, this extended three bedroom semi backs on to Cassiobury Park, with direct access and is being sold with no onward chain. Council Tax band: F

Tenure: Freehold

- Extended semi-detached
- 3 Bedrooms
- Re-fitted kitchen
- Own drive to garage
- Backing Cassiobury Park
- Close to station & schools
- Requires modernisation
- Potential to extend
- No upper chain



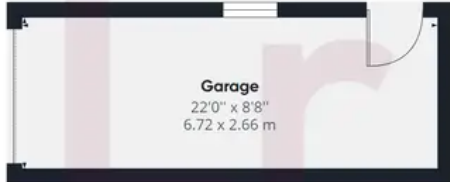




Ground Floor Building 1



Floor 1 Building 1



Ground Floor Building 2

Approximate total area⁽¹⁾
1362.27 ft²
126.56 m²

(1) Excluding balconies and terraces

While every attempt has been made to ensure accuracy, all measurements are approximate, not to scale. This floor plan is for illustrative purposes only.



Lawrence Rand

Lawrence Rand, 106 Victoria Road - HA4 0AL

01895 632211

Info@lawrence-rand.co.uk

www.lawrence-rand.co.uk/



LAWRENCE RAND