



LAWRENCE RAND

Ashbourne Avenue, Harrow

£365,000



Ashbourne Avenue

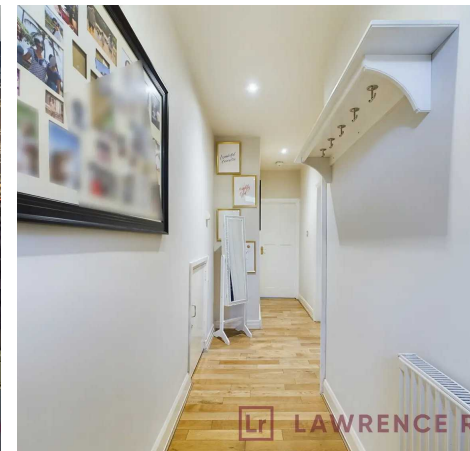
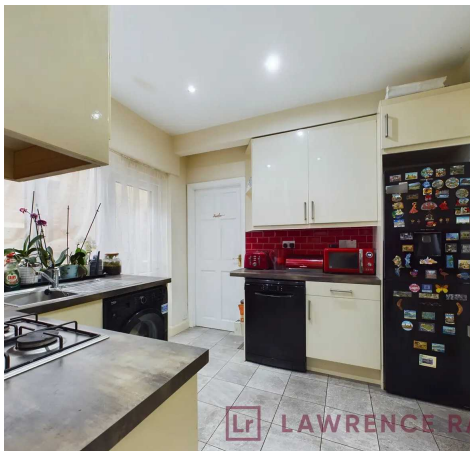
Harrow, Harrow

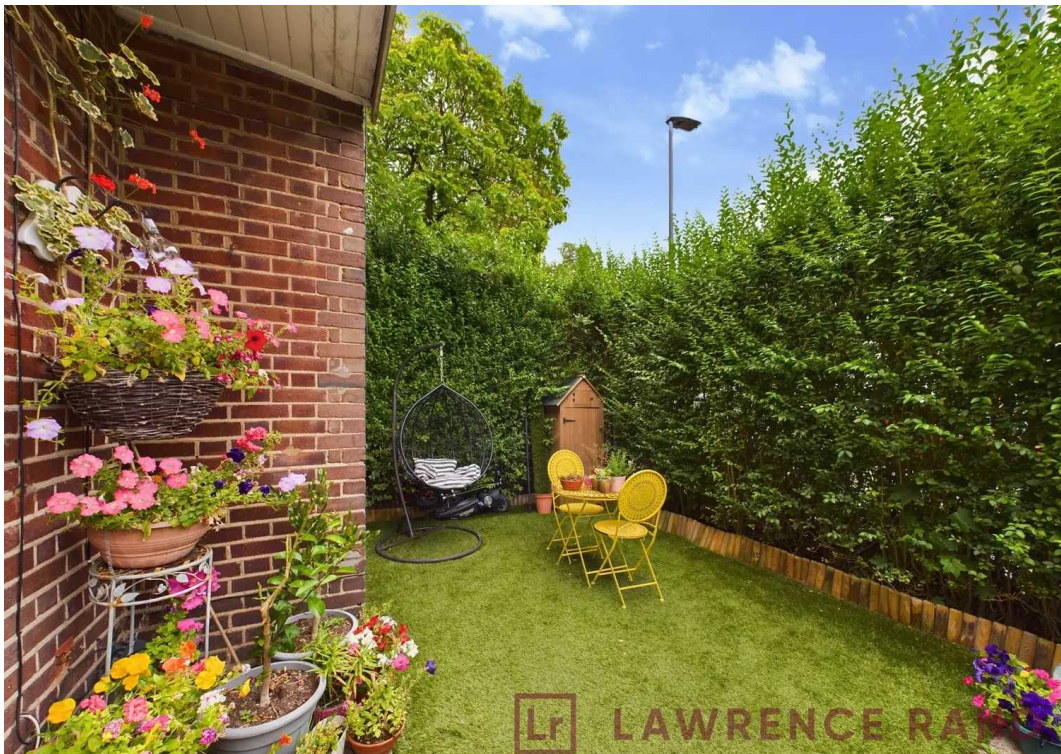
Situated in the heart of Harrow this two bedroom ground floor maisonette offers bright spacious living in a fantastic location.

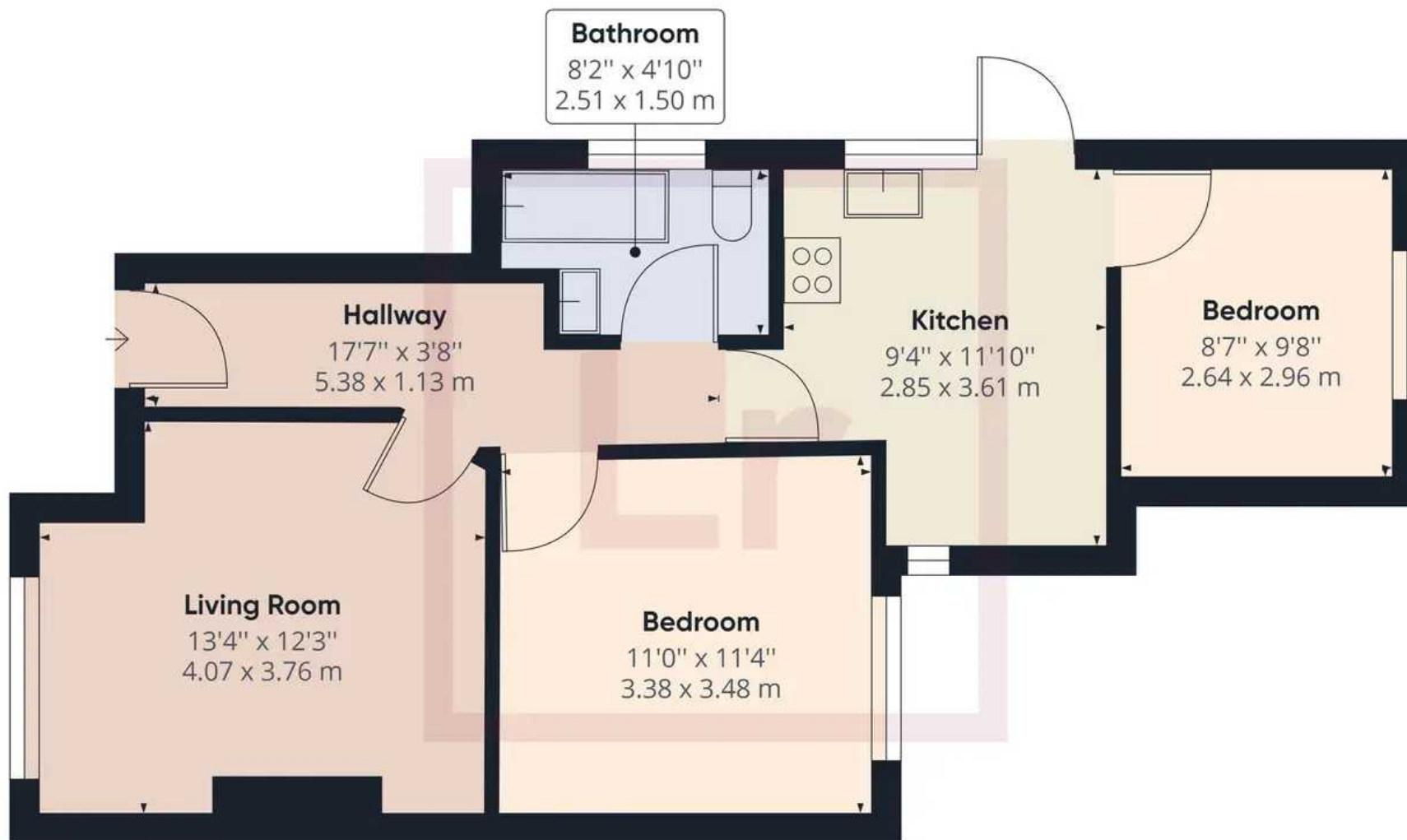
Council Tax band: C

Tenure: Leasehold

- Ground floor maisonette
- Two double bedrooms
- Family Bathroom
- Private Garden
- Close to amenities
- Generous accommodation
- Long lease remaining







Approximate total area⁽¹⁾

580.45 ft²

53.93 m²

(1) Excluding balconies and terraces.

While every attempt has been made to ensure accuracy, all measurements are approximate, not to scale. This floor plan is for illustrative purposes only.

GIRAFFE 360



Lawrence Rand

Lawrence Rand, 106 Victoria Road - HA4 0AL

01895 632211

Info@lawrence-rand.co.uk

www.lawrence-rand.co.uk/



LAWRENCE RAND