



2  
Bedrooms

1  
Bathroom





**\*NO CHAIN\*** Next Move Estate Agents are pleased to offer this two bedroom semi-detached home located in Parnwell Peterborough in brief comprises of entrance hall, lounge, kitchen, two bedrooms, family bathroom, off road parking, garage, MUST VIEW, NO CHAIN.

Engtrance Hall

Lounge  
13.07ft x 6.07ft

Kitchen/Diner  
9.02ft x 12.06ft

Landing

Bedroom One  
8.01ft x 12.06ft

Bedroom Two  
9.04ft x 9.03ft

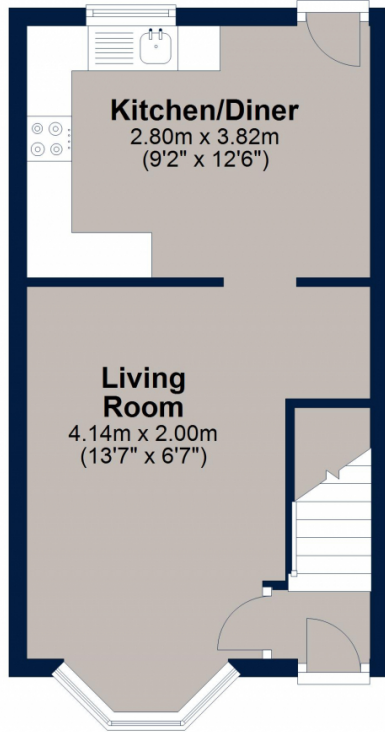
Bathroom

Outside

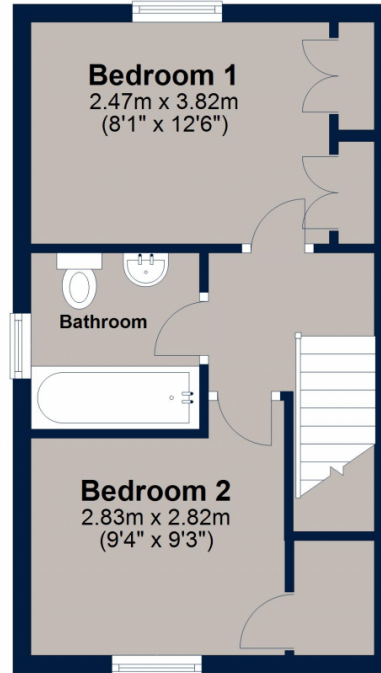
The front of the property is mainly laid to lawn with ample off road parking to the side leading to a single garage.

The rear of the property is mainly laid to lawn with patio area.

Ground Floor



First Floor



Total area: approx. 54.0 sq. metres (581.1 sq. feet)

Plan is for illustration purposes only and may not be representative of the property. Plan is not to scale. Plan produced by M-Photo  
Plan produced using PlanUp.

Score	Energy rating	Current	Potential
92+	A		
81-91	B		90 B
69-80	C		
55-68	D	68 D	
39-54	E		
21-38	F		
1-20	G		

