

Lilac Avenue

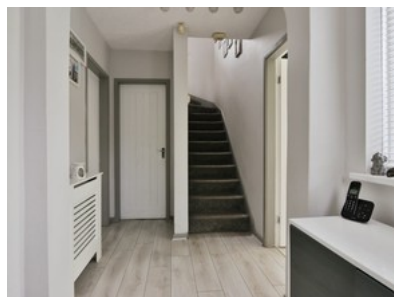
£250,000-£270,000



beercocks
valuing people, not just houses



- ✓ Sought-after Location
- ✓ Three Double Bedrooms
- ✓ Double Garage And Generously Sized Drive
- ✓ Includes Summer House
- ✓ Modern Interior
- ✓ Freehold
- ✓ Tax Band D
- ✓ Epc Rating D



Bedroom  3 Bathroom  1 Reception  2

Guide Price

£250,000