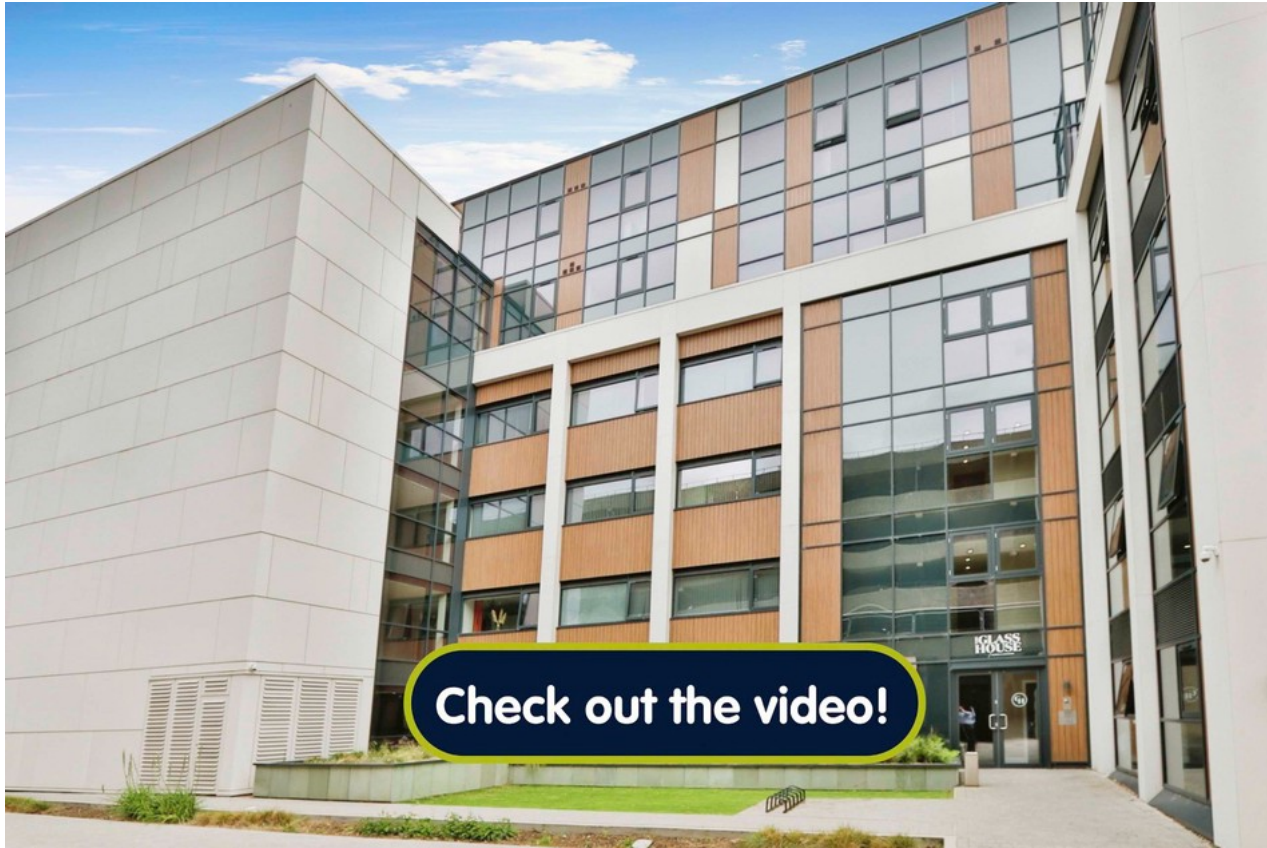


# Queens Dock Avenue

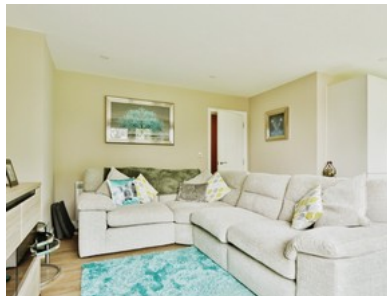
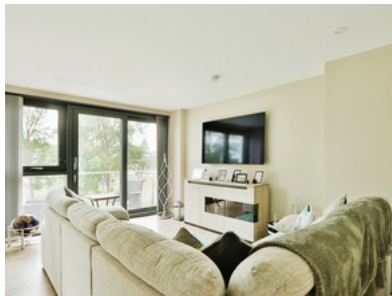
## Inviting Offers Between £240,000 - £250,000






**beercocks**  
valuing people, not just houses



- ✔ Luxurious City Center Apartment
- ✔ With Concierge, Gym, Cinema Room & Offices
- ✔ Allocated Under-cover Parking
- ✔ Two Spacious Bedrooms
- ✔ Leasehold
- ✔ Tax Band D
- ✔ Epc Rating C



Bedroom  2 Bathroom  1 Reception  1

Guide Price

**£240,000**