



8 Whitworth Road, Portsmouth

Offers in Region of £285,000

 chinneckshaw



8 Whitworth Road

Portsmouth

We are delighted to present this newly renovated three-bedroom bay and forecourt style home exemplifies modern design and comfort.

Step inside and be greeted by a beautiful living space at the forefront, graced by a paneled feature wall that adds a touch of sophistication. A second reception room offers versatile space, and a convenient downstairs toilet underscores contemporary convenience. Equally, this space could also be used as an additional bedroom for any large families needing that little bit of extra space.

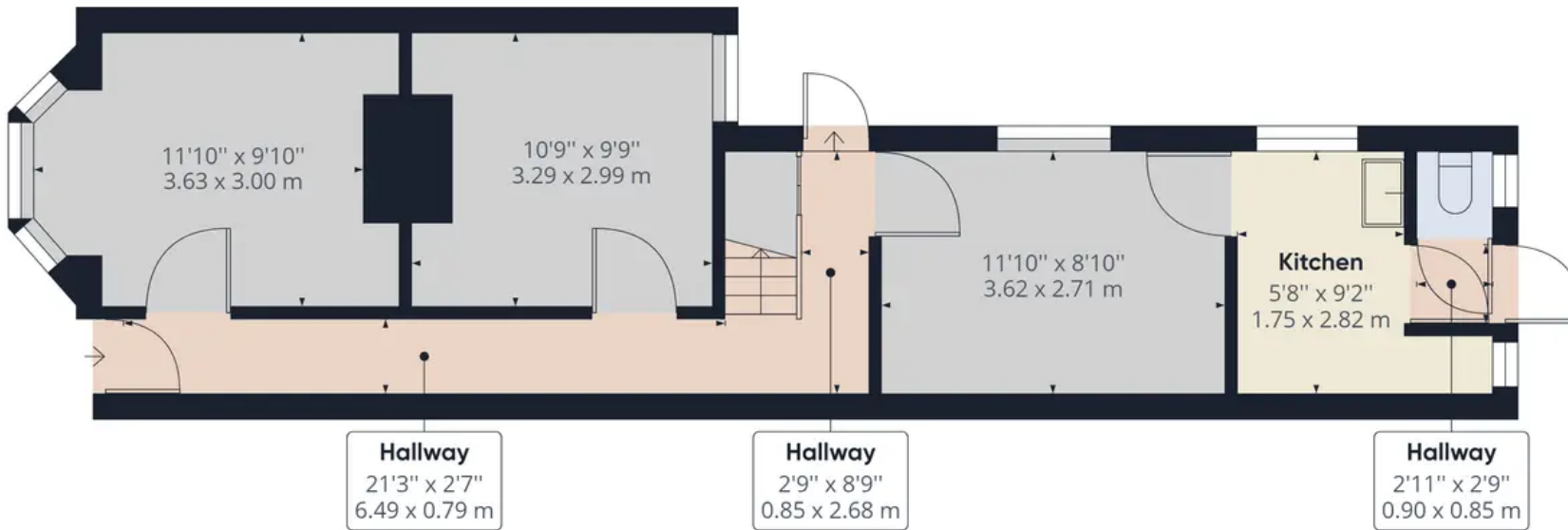
Prepare to be captivated by the exquisite new kitchen/diner, a stunning space that seamlessly flows perfectly through new double glazed patio doors into a tranquil, landscaped, east-facing garden, perfect for al fresco dining and relaxation.

Upstairs, three thoughtfully designed bedrooms await. The rear bedroom could be a lovely nursery or office space. A brand-new upstairs bathroom, adorned with contemporary fittings, invites you to unwind. The second bedroom, generously proportioned, balances charm and versatility effortlessly. A spacious principal bedroom at the front, is bathed in natural light and promises to be the perfect space to unwind.

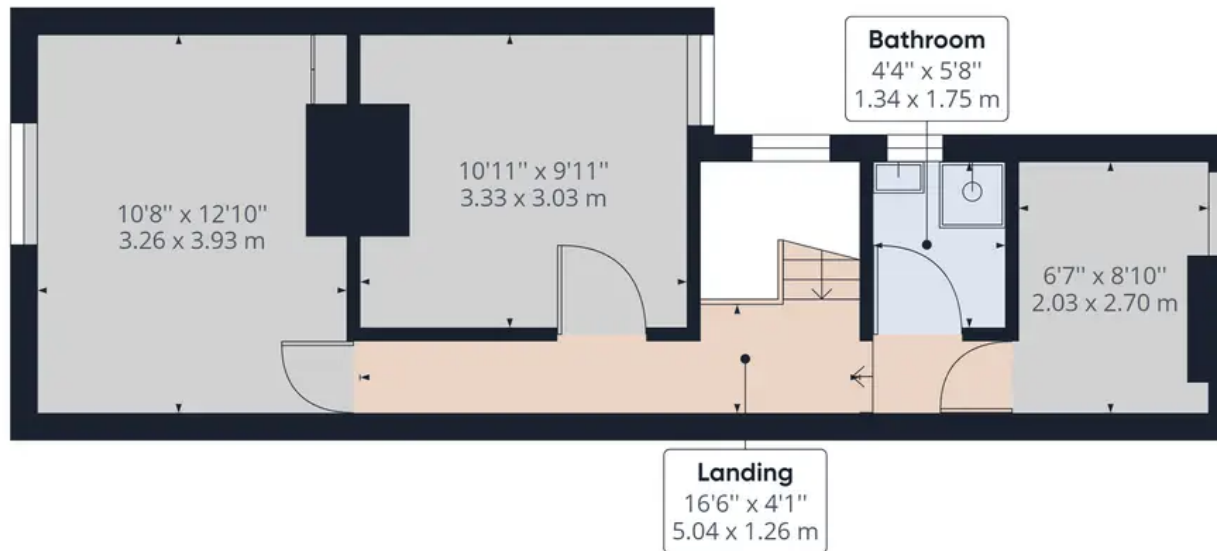
As part of the extensive renovations made, the owners have installed a brand-new central heating system, new insulation throughout including the loft areas. There are also new double-glazed doors from the kitchen to garden and a new large kitchen window.

Situated in the heart of Copnor, this residence presents an outstanding opportunity to own a traditional home without having to lift a finger. Simply unpack and start living. With its strategic location, remarkable upgrades, and inviting spaces, this Whitworth Road gem is a must-see for those seeking modern comfort in a cherished traditional setting. Your dream home awaits.





Ground Floor



Floor 1

Approximate total area⁽¹⁾

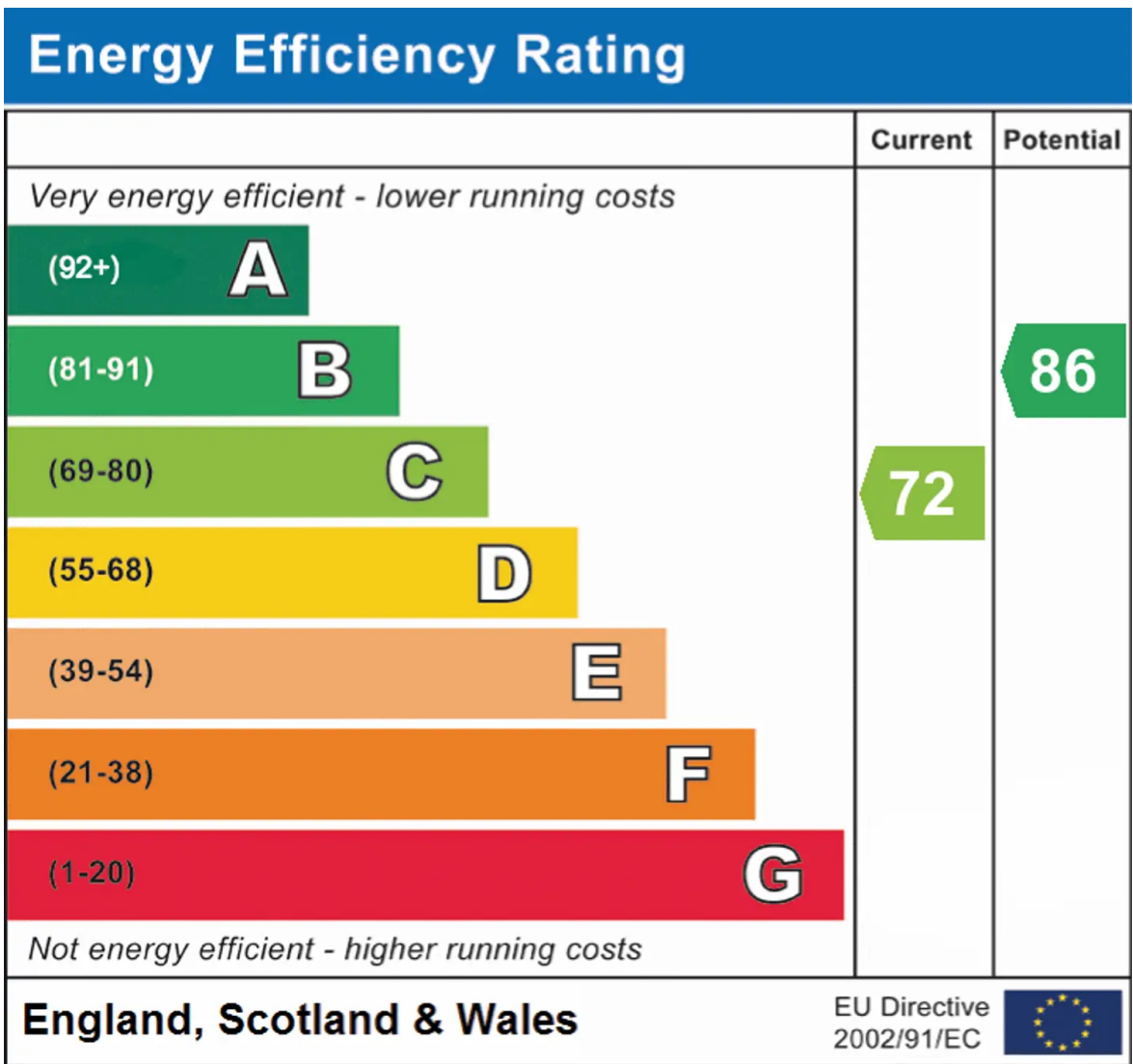
904.72 ft²

84.05 m²

(1) Excluding balconies and terraces

While every attempt has been made to ensure accuracy, all measurements are approximate, not to scale. This floor plan is for illustrative purposes only.

GIRAFFE360



Chinneck Shaw

Bridge House, Milton Road, Portsmouth – PO3 6AN

023 9282 6731

hello@chinneckshaw.co.uk

www.chinneckshaw.co.uk/

Chinneck Shaw, Bridge House, Milton Road, PO3 6AN Consumer Protection from Unfair Trading Regulations 2008: These details are for guidance only and complete accuracy cannot be guaranteed. If there is any point which is of particular importance, verification should be obtained. The do not constitute a contract or part of a contract. All measurements are approximate. No guarantee can be given with regard to planning permissions or fitness for purpose. No apparatus, equipment, fixture or fitting has been tested. Items shown in the photographs are NOT necessarily included. Interested Parties are advised to check availability and make an appointment to view before travelling to see a property.