



 3  
Bedrooms

 2  
Bathrooms





Everstar properties are very pleased to present this extended three bedroom semi detached stunning family house for sale in High Wycombe. Positioned in the highly regarded village of Wooburn Green to the East side of High Wycombe.

The property comprises of :

**Ground floor**

Front porch

Through lounge/dining room

Separate study/office

Fitted kitchen

Ground floor wet room

Good size level garden to the rear

**First floor**

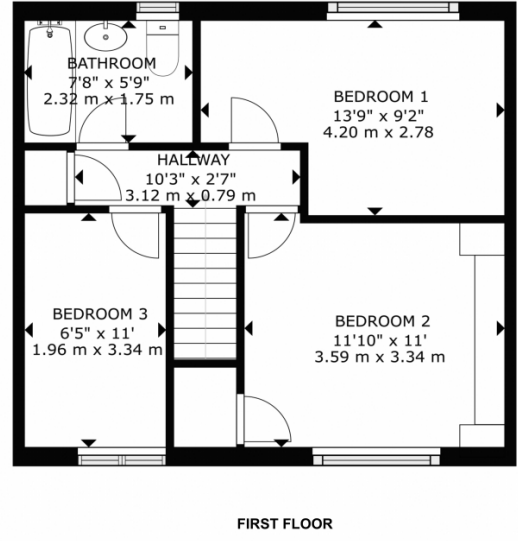
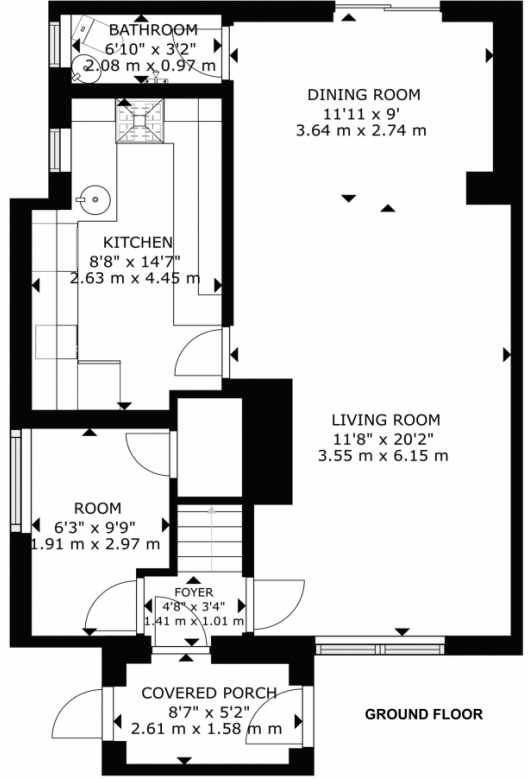
Two double bedrooms

One single bedroom

Family bathroom.

Call us now to book your viewing

(no upper chain)



GROSS INTERNAL AREA  
GROUND FLOOR: 686 sq. ft. 63.7 m<sup>2</sup>, FIRST FLOOR: 449 sq. ft. 41.75 m<sup>2</sup>  
TOTAL: 1135 sq. ft. 105.45 m<sup>2</sup>  
SIZES AND DIMENSIONS ARE APPROXIMATE, ACTUAL MAY VARY.

