



Golding Way | Glemsford | CO10 7UT

£875 pcm

A two bedroom terrace property in the popular village of Glemsford is available in August. The property benefits from being close to local amenities, two bedrooms, allocated parking and enclosed rear garden. Call now to secure a viewing.

- Available August
- Two Bedrooms
- Enclosed Garden
- Allocated Parking
- Gas Central Heating
- Popular Location

PORCH Enter into property. Window to side aspect. Door to living room.

LIVING ROOM 11' 4" x 12' 5" (3.45m x 3.78m)
Window to front aspect. Door to kitchen/diner.
Stairs to first floor.

KITCHEN/DINER 12' 4" x 10' 0" (3.76m x 3.05m)
Window to rear aspect. A range of matching wall and base units. Electric oven and hob with extractor over. Space for washing machine and fridge/freezer. Stainless steel sink. Wall mounted boiler. Door leading to rear garden.

LANDING Stairs descending into living room. Doors to both bedrooms and bathroom. Loft access.

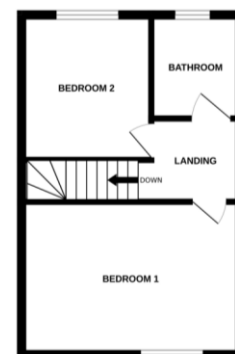
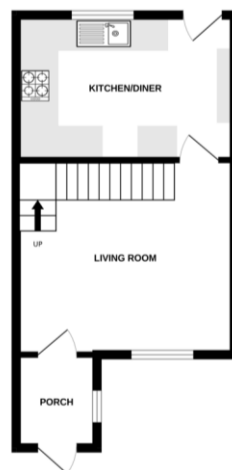
MASTER BEDROOM 10' 6" x 8' 0" (3.2m x 2.44m)
Window to front aspect.

BEDROOM TWO 9' 6" x 6' 2" (2.9m x 1.88m)
Window to rear. Door to airing cupboard.

BATHROOM Window to rear. Fully tiled suite comprising of WC, pedestal sink and bath with shower over.

OUTSIDE The front garden is laid to lawn with low brick retaining wall and gravel flower bed. The rear garden is again laid to lawn with path leading to rear access and allocated parking area.

Local Authority – Babergh District Council
Council Tax Band – B
Post Code – CO10 7UT



Score	Energy rating	Current	Potential
92+	A		
81-91	B		89 B
69-80	C		
55-68	D	62 D	
39-54	E		
21-38	F		
1-20	G		

Contact Details

6 King Street, Sudbury, Suffolk, CO10 2EB

Tel: 01787 468400

Email: sudbury@bychoice.co.uk

Agents Note: Whilst every care has been taken to prepare these sales particulars, they are for guidance purposes only. All measurements are approximate and are for general guidance purposes only and whilst every care has been taken to ensure their accuracy, they should not be relied upon and potential buyers are advised to recheck the measurements

