

Sempringham Court

Salisbury Road, Marlborough, Wiltshire, SN8
4AH

Rent £850 pcm

A spacious FURNISHED two bedroom apartment located in the sought after Sempringham Court development. CALL TODAY TO ARRANGE YOUR VIEWING! 01672 514380.



Property Features

- Central Marlborough
- Kitchen/Diner
- Furnished Property
- Living Room
- Allocated Parking
- Family Bathroom
- Gas Central Heating
- En-suite Shower Room
- Two Double Bedrooms

Full Description

DESCRIPTION

The apartment benefits from off road parking, residents lift and a mature communal garden. Gas fired central heating and double glazed windows.

The accommodation comprises of a hallway with a large storage cupboard. A bathroom with a wc, wash basin and panel bath with shower above. There are two large double bedrooms with the master bedroom benefitting from an en suite shower room. Of particular note is the large open plan living accommodation consisting of a dining area, living area and a kitchen. The room features an island forming part of the kitchen and an arched window overlooking the gardens.

APPOINTMENTS

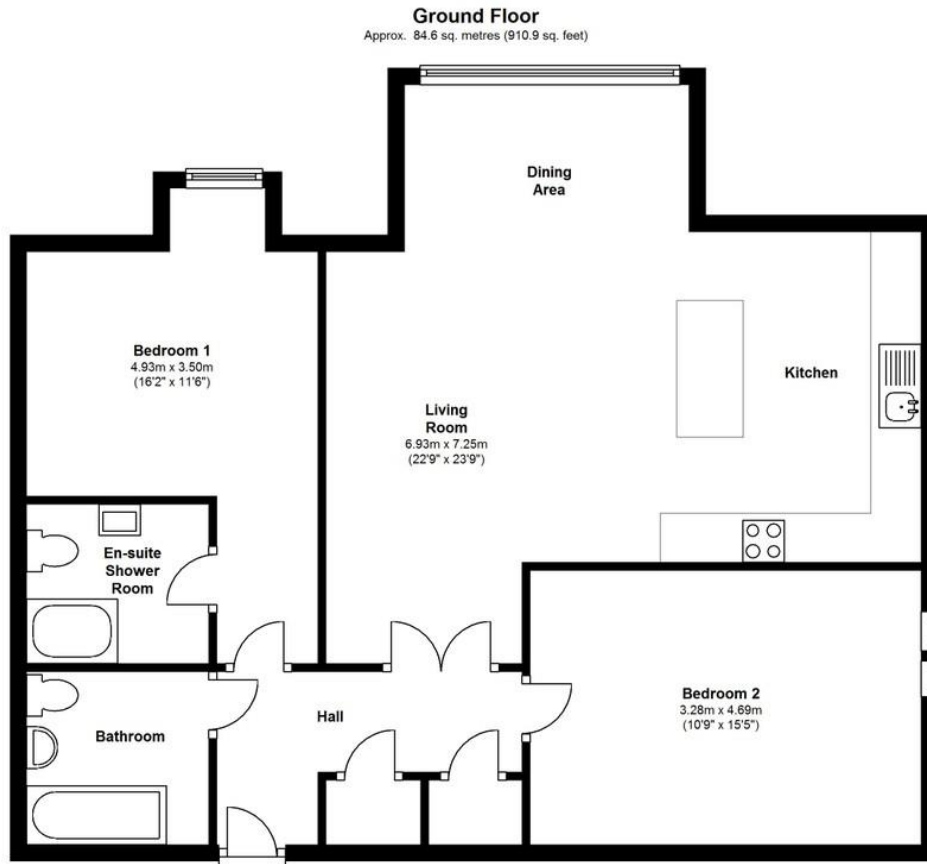
Viewings are by appointment only.

Please contact SLCA to arrange a suitable time.

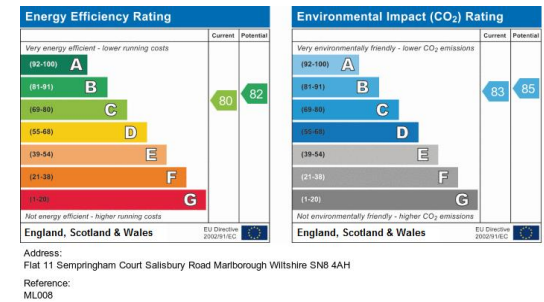
Tel: 01672 514 551 Email: office@slca.net







Total area: approx. 84.6 sq. metres (910.9 sq. feet)
This floorplan is to be used as guidance only. The accuracy of these plans cannot be verified.
Plan produced using PlanUp.



99A High Street
Marlborough
Wiltshire
SN8 1HD

www.slca.net
office@slca.net
01672 514 380

Agents Note: Whilst every care has been taken to prepare these sales particulars, they are for guidance purposes only. All measurements are approximate are for general guidance purposes only and whilst every care has been taken to ensure their accuracy, they should not be relied upon and potential buyers are advised to recheck the measurements