

Legal 2 Move

Trefeddyg
High Street
Tywyn
Gwynedd
LL36 9AD
Tel. 01654 712218
Fax. 01654 712015

Property Sales and Conveyancing

www.legal2move.co.uk
e-mail: info@legal2move.co.uk

9 Penrallt Street
Machynlleth
Powys
SY20 8AG
Tel. 01654 702335

Pant Yr Owen Farm, Happy Valley, Tywyn, Gwynedd, LL36 9HU



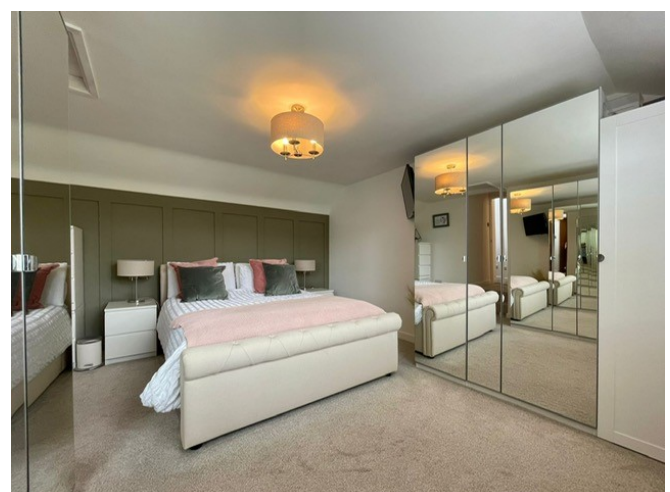
Nestling in a picturesque valley, with 360 degree views of uninterrupted, unspoilt countryside, Pant Yr Owen Farm, dating back to the 1800's, is absolutely stunning. The three bedroom extended farmhouse has been sympathetically renovated to a high standard, with modern day fixtures and fittings, under-floor heating and oil fired central heating, double glazed windows and doors which include bi-fold doors to a beautifully designed split level kitchen and dining room. There is a private pressurised filter water supply system and separate private drainage services for the farm house and the delightful Ashcroft static caravan, which is fully equipped, with separate access, internet connection, double glazing and central heating. Two impressive barns, of steel construction with block walls, timber cladding, wooden doors, power points and lighting are sited within easy distance of the farmhouse.

The freehold land extends to approximately 43.20 acres (17.52 hectares) of which 4.25 acres (1.72 hectares) is non-grazing.



Freehold.
Guide Price
£825, 000





- **ENTRANCE PORCH**
- **SITTING ROOM, OPEN PLAN TO ~**
- **DINING ROOM, SPLIT LEVEL TO ~**
- **KITCHEN**
- **INNER HALLWAY**
- **SHOWER ROOM**
- **UTILITY**
- **LOUNGE**
- **LANDING**
- **THREE BEDROOMS**
- **SHOWER ROOM**
- **UNDER FLOOR HEATING AND OIL FIRED CENTRAL HEATING**
- **DOUBLE GLAZED WINDOWS AND DOORS, INCLUDING BIFOLD DOORS**
- **TWO LARGE BARNs**
- **STATIC CARAVAN**
- **APPROXIMATELY 43.20 ACRES (17.52 HECTARES) OF LAND**
- **PRIVATE WATER AND DRAINAGE FACILITY**
- **1.9 MILES TO THE COASTAL TOWN OF TYWYN AND 4.7 MILES TO ABERDYFI HARBOUR**
- **SCENIC LOCATION WITHIN THE SNOWDONIA NATIONAL PARK**

*Freehold.
Guide Price
£825, 000*

Location

Pant Yr Owen Farm, located in Happy Valley, Tywyn, is approximately 4.7 miles from Aberdyfi Harbour and 1.9 miles to the coastal town of Tywyn. From Tywyn take the Aberdyfi road towards Happy Valley (approximately 1 mile). Take a left hand turn, sign posted Happy Valley and continue this 'B' road for a further 0.9 miles. The property is located on the right hand side. Our 'Ar Werth /For Sale' sign is displayed.

Description

Outstanding, detached, three bedroom, renovated and extended farm house, of traditional construction, dating back to the 1800's. The sale includes two large barns and approximately 43.20 acres of land (17.52 hectares) of which 4.25 acres (1.72 hectares) is non grazing land. Also included is a static, two bedroom, refurbished caravan. Internet connection is available at the farm and caravan.

FARMHOUSE

Entrance Porch (Front)

12' 6 x 8' 6

(3.81m x 2.59m)

Newly built porch with oak pillars, Cederal cladding, pitch slate tiled roof and double glazed entrance door. The internal walls have been decorated in a deep shade of blue which is complimented by a white painted ceiling and white double glazed windows. Slate tiled floor, chrome power points and oak doors to cloaks / storage cupboard and sitting room.

Cloak / Storage Cupboard

A good storage area with slate tiled floor, cloak hanging space, power points and lighting.

Sitting Room / Open Plan to Dining Room (Front)

31' 6 x 12' 8

(9.60m x 3.86m)

Open plan to dining room, the sitting room is beautifully designed with white walls and oak herringbone floor with under-floor heating. Ceiling inset spot lighting, chrome power points, light switches and T.V. aerial point. An oak door connects to the inner hallway.

Dining Room (Front)

A good size family entertaining space, with vaulted ceiling and inset spot lighting. Oak herringbone floor with under-floor heating and chrome power points and light switches. Superb floor to ceiling, cathedral style double glazed window to side elevation and double glazed bi fold doors to front elevation, with superb views across unspoilt countryside. Two steps up to split level, open plan kitchen.

Split Level Kitchen (Rear / Side)

16' 2 x 14' 7

(4.93m x 4.44m)

Superb kitchen for both quality and design. White walls, white marble effect tiled floor and high vaulted ceiling with inset spot lighting. The kitchen is fitted with grey shaker style units which include base units, two larder cupboards, pan drawers, wall cupboards and a walk in corner cupboard. There is an integrated dishwasher, drinks cooler, two separate AEG, electric fan ovens and multi functional microwave with warming tray beneath. The breakfast bar / island is fitted with under-counter base units and stainless steel sink with pull out spray mixer tap. Under-floor heating, chrome power points and light switches. Two Velux windows with electronic remote control black out blinds and double glazed bi fold doors to side elevation, with superb views over countryside. An oak door leads into~

Inner Hallway 'L' shaped and split level.

White walls and white marble effect tiled floor with under-floor heating. Ceiling inset spot lighting and chrome power points. Oak door to shower room and fully double glazed door to rear elevation. The hallway is split level by one step which leads to the utility, lounge, sitting room and staircase to the first floor.

Shower Room (Rear)

4' 9 x 4' 7

(1.45m x 1.40m)

Modern and bright shower room, with white walls, ceiling inset spot lighting and white marble tiled floor with under-floor heating. White suite comprising, ceramic wash hand basin with vanity unit, close coupled W.C. and 1200 shower cubicle with glass doors and rainfall chrome shower, operated from the combi boiler. Electric chrome towel rail, extractor fan and double glazed window with obscure glass and oak sill to rear elevation.

Utility (Rear)

9' 11 x 5' 5

(3.03m x 1.64m)

White walls and slate flag stone floor. The Worcester oil combi boiler is housed here. Light grey gloss base units and wall cupboards. Complementing work tops and plumbing for washing machine. Chrome power points, light switches and radiator.

Lounge (Side)

21' x 12' 9

(6.40m x 3.89m)

White ceiling, white windows and deep white sill compliment the sage green walls and oak herringbone floor. Oak beam to inglenook fire-place with cast iron multi fuel burner and flag stone hearth. A recess double glazed window demonstrates the thickness of the chimney wall approximately 4' thick (1.22m). Chrome power points, switches, two radiators and T.V. aerial point. Double glazed windows to side elevation and oak internal doors leading back into the hallway and side lobby.

Side Lobby

Thick oak beams to canopy entrance with slate pitch tiled roof. White decorated walls and slate tiled floor. Wall mounted consumer unit, fibre connection and isolators for caravan and barns.

First Floor Landing

Feature recess area above the stairs with deep slate shelving. White walls, grey carpet and pendant light. Double glazed window to front elevation. Double doors to wardrobe / cloak hanging space with radiator, dress rail, shelving and lighting. Door to linen cupboard with radiator and shelving.

Master Bedroom (Front) 13' 11 x 11' 11 (4.24m x 3.63m)

Quirky in design and split level from the landing, the master bedroom has white walls, beige carpet and olive wall panelling to feature wall. Two built-in mirror wardrobes and two single shelved cupboards. Radiator, chrome light switches, power points and access to insulated loft space. Double glazed window to front elevation with superb views over unspoilt landscape.

Shower Room (Rear) 8' 9 x 8' (2.66m x 2.45m)

A bright and spacious room with grey herringbone effect laminate floor, white walls and grey panelling to feature walls. White suite comprising, wash hand basin with vanity unit and electric heated wall mirror over, close coupled W.C., 1200 shower cubicle with glass sliding doors and chrome rainfall shower, operated off the combi system. Extractor fan, heated towel rail, ceiling inset spot lighting, exposed ceiling beam and Velux window with blackout remote control blind.

Bedroom (Rear / Side) 11' 4 x 9' 6 (3.46m x 2.89m)

White walls, grey carpet and grey panelling to feature wall. Exposed ceiling beam, radiator, T.V. aerial point and chrome power points and light fittings. Floor to ceiling, double glazed window to rear / side elevation.

Bedroom (Side) 10' 8 x 9' 6 (3.24m x 2.90m)

White walls, grey carpet and wooden panelling to feature wall. Former fire-place with exposed oak beam and slate hearth. An oak door leads to a 'walk-in' wardrobe with dress rail, shelving, lighting and radiator. Chrome power points, lighting and T.V. aerial point. Radiator and, floor to ceiling, double glazed window to side elevation.

Outside

A low maintenance garden with shale terrace and superb views over the valley. Close to the house are two barns of good size, adjacent to each other.

BARN 1

Of steel and timber construction with block built walls, timber cladding, concrete floor, wooden doors, power points and lighting.

This barn is divided into four individual sections with options of use.

- | | | | | | | |
|----|--------|---|-------|---------|---|--------|
| 1. | 16' 3 | x | 13' 3 | (4.95m | x | 4.04m) |
| 2. | 16' | x | 15' 6 | (4.88m | x | 4.72m) |
| 3. | 29' 10 | x | 15' 8 | (9.09m | x | 4.77m) |
| 4. | 45' | x | 16' 4 | (13.72m | x | 4.98m) |

BARN 2

One overall space size approximately 45' x 16' 4 (13.72m x 4.98m)

This barn houses the pressurized water tank. Power points, lighting and timber doors.

STATIC ASHCROFT CARAVAN

This modern, fully equipped caravan is located away from the farmhouse and has its own enclosed garden and driveway entrance. A delightful potential holiday retreat, with internet connection, double glazing and central heating.

This immaculate dwelling comprises;

Breakfast kitchen (Front / Rear) 11' 8 x 10' 2 (3.56m x 3.10m)

Fully equipped and fitted with beech effect base units, drawers and wall cupboards. Built-in LPG gas cooker with chrome extractor hood over. Chrome power points and light switches. Double glazed window to front and rear elevation. Double, part glazed, doors to lounge and white panelled door to inner hallway.

Lounge (Front / Rear) 12' x 11' 8 (3.66m x 3.56m)

A delightful, well furnished cosy lounge with neutral décor and carpet. Modern feature fire-place with inset electric fire. Power points, T.V. aerial point and double glazed windows. Double glazed French doors lead out to a raised decked seating area.

Inner Hallway

Neutral décor and carpet. Ceiling inset spot lighting and white panelled doors to two bedrooms and shower room.

Shower Room (Rear) 9' 10 x 3' 6 (3.00m x 1.07m)

Neutral décor and vinyl floor. Cupboard housing the LPG oil combi boiler. Oak effect vanity unit with wash hand basin and W.C. 900 shower cubicle with glass sliding doors and chrome shower, fed from the oil combi boiler. Wall mirror, heated towel rail and extractor fan. Door connecting to master bedroom and double glazed window with obscure glass to rear elevation.

Master Bedroom 1 (Front) 9' 8 x 8' 10 (2.95m x 2.69m excluding fitted wardrobes)

Quality furnished, double bedroom with neutral décor and carpet. Double, built-in mirror wardrobes. Fitted bedroom furniture and double bed. Power points and radiator. Floor to ceiling double glazed window with views across the valley.

Bedroom 2 (Front) 9' 3 x 5' 6 (2.82m x 1.68m)

Neutral décor and carpet. Twin bedded room with built-in bedroom furniture and two single beds. Radiator and power points. Double glazed window to front elevation with superb views.

ALL SIZES ARE APPROXIMATE

Outside

The garden area to the caravan is enclosed. There are two seating areas, a raised decked area fronting the lounge and a low maintenance shale garden. A superb retreat, privately appointed and away from the farmhouse with views over the valley and unspoilt countryside .

Land

The land comprises 43.20 acres (17.52 hectares) or thereabouts of which some 4.25 acres (1.72 hectares) is non - grazing. A Plan and Schedule of Acreage accompanies these particulars.

Guide Price £825, 000

Tenure Freehold

Council Tax Banding E

Services Mains Electricity, private water and drainage .

Local Authorities Gwynedd Council.

Viewing

Strictly by appointment with the selling agents:
Legal 2 Move at Trefeddyg, High Street, Tywyn, Gwynedd, LL36 9AD
Tel. 01654 712218 Email info@legal2move.co.uk
Aled Ellis & Co., 16 Terrace Road, Aberystwyth.
Tel. 01970 626160 Email sales@aledellis.com
9 Penrallt Street, Machynlleth, Powys SY20 8AG. Tel. 01654 702335
Web site ~ www.legal2move.co.uk E-mail ~ info@legal2move.co.uk

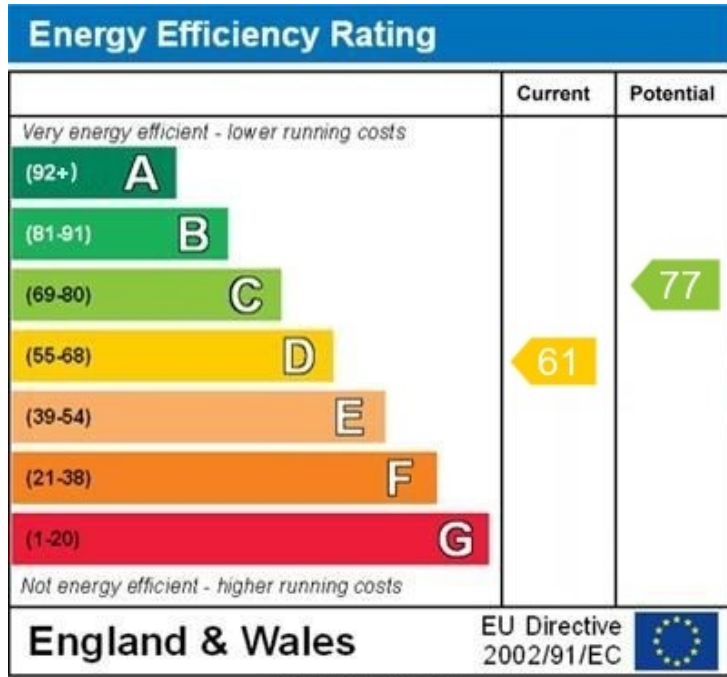
Agent's Note

The Agent has neither tried nor tested any appliances, fixtures, fittings or services and therefore cannot verify that they qualify as being fit for purpose.



Caravan, barn and paddock





Pant Yr Owen, Cwm Maethlon, Happy Valley, LL36 9HU

Approximate Gross Internal Area
173.7 sq m / 1870 sq ft

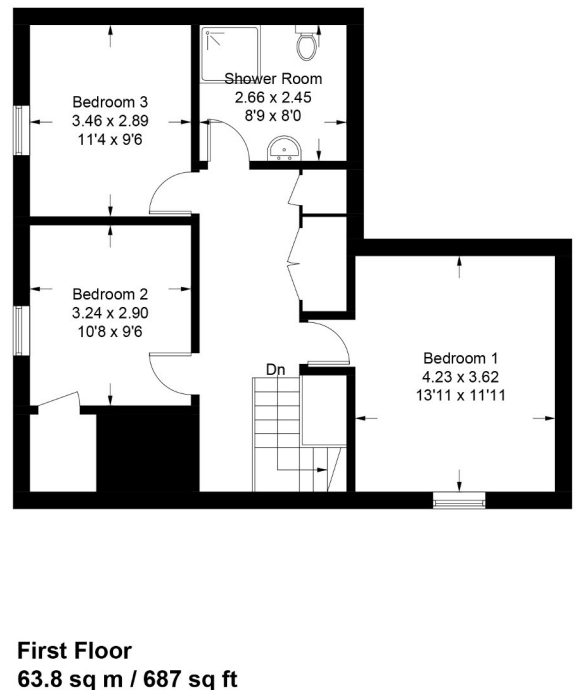
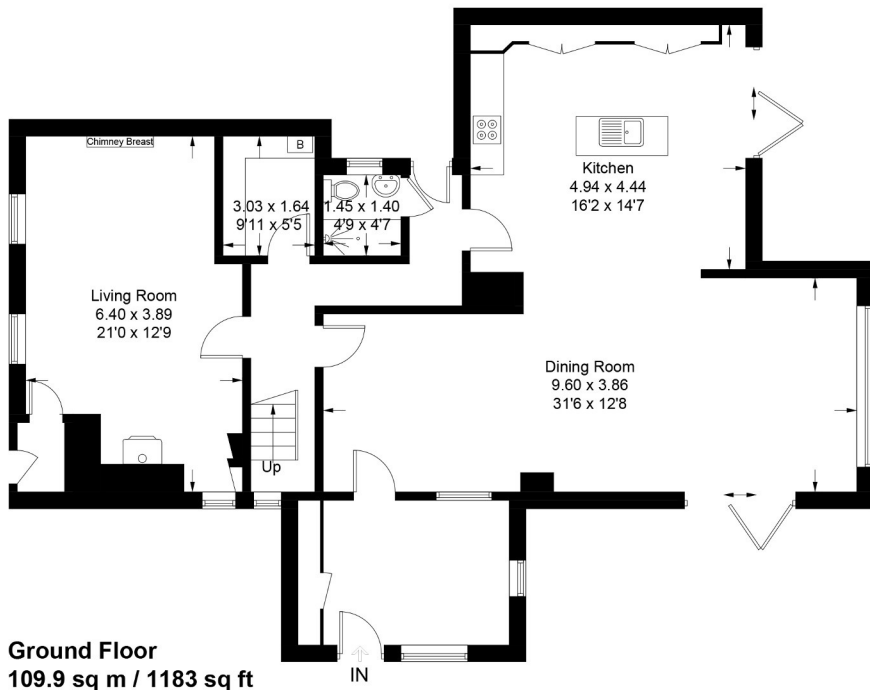


Illustration for identification purposes only,
measurements are approximate, not to scale.



MISREPRESENTATION ACT, 1967

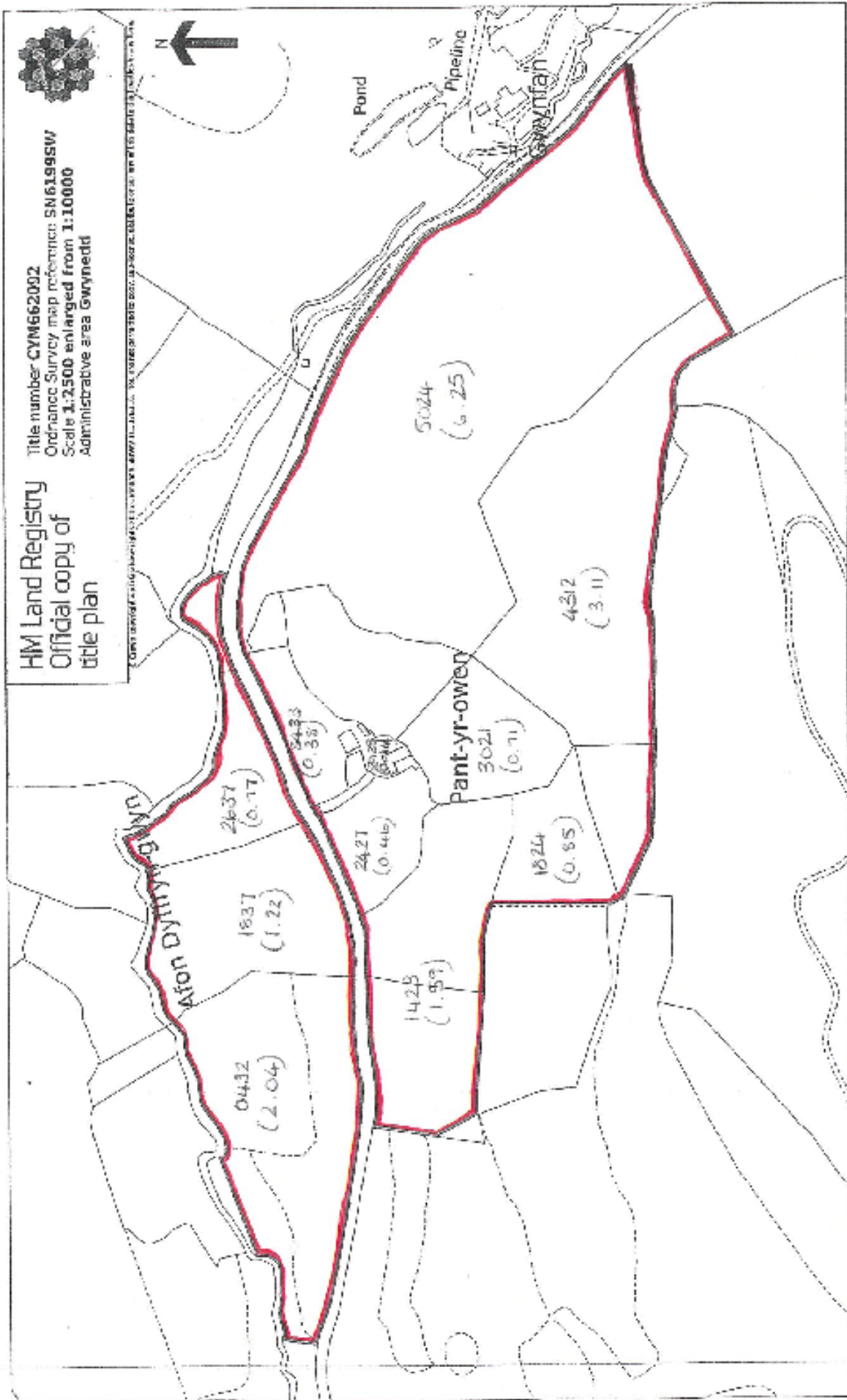
Legal 2 Move for themselves and the Vendors of this property whose Agents they are given notice that:

1. These particulars do not constitute any part of an offer or contract. 2. All statements contained in these particulars as to this property are made without responsibility on the part of Legal 2 Move. 3. None of these statements contained in these particulars as to this property are to be relied on as statements or representations of fact. 4. Any intending purchaser must satisfy himself by inspection or otherwise as to the correctness of each of the statements contained in these particulars. 5. The Vendor does not make or give and neither Legal 2 Move nor any person in their employment has any authority to make or give any representation or warranty in relation to this property.

SCHEDULE OF ACREAGES

PANT YR OWEN, CWM MAETHLON
TYWYN, GWYNEDD, LL36 9HU

| ENCLOSURE NUMBER | AREA |
|---|--------------------------------------|
| 0432 (Below road) | 2.04 |
| 1837 (Below road) | 1.22 |
| 2637 (Below road) | 0.77 |
| 1423 | 1.59 |
| 2427 | 0.46 |
| 2928 (Homestead) | 0.14 |
| 3433 | 0.38 |
| 3021 | 0.71 |
| 4312 | 3.11 |
| 5024 (Mountain) | 6.25 |
| 1824 (Woodland) | 0.85 |
| Total Area | 17.52 hectares or 43.20 acres |
| 1.72 hectares (or 4.25 acres) is non grazing land | |



This official copy is inaccurate without the preceding index page.
Mae'r copi swyddogol hon yn anghywngedig heb y dudalen nodiwrch blaenorol.